



# BRUSSELS SCHOOL OF INTERNATIONAL STUDIES

# WELCOME

*Kent is known as the UK's European university, with seven locations across Europe and strong links with prestigious European institutions.*

*Situated in the 'capital of Europe', the Brussels School of International Studies is one of Kent's four specialist postgraduate centres in major European capitals. We offer Master's and PhD programmes led by world-leading academics in international studies from top-ranking schools across the University. Experienced practitioners regularly contribute to our courses and we are able to offer our students valuable work experience through a range of internship opportunities.*

*As Dean for Europe, I am responsible for the overall strategic vision of Kent's European centres and I am proud to welcome you to the Brussels School of International Studies.*

**Professor Jeremy Carrette**  
Dean for Europe, University of Kent

*The Brussels School of International Studies is a unique postgraduate centre in which students from all over the world come to study advanced international affairs.*

*We welcome students from 45 countries across the globe and our staff represent 12 different nationalities, creating a truly international academic community. We take advantage of our location in Brussels, the diplomatic capital and policymaking centre of Europe and host city to the European Union, NATO and many other international organisations, and encourage our students to interact and make valuable connections with these institutions. The School is grounded in an interdisciplinary spirit, creating synergies between subjects in law, politics and international relations.*

*Our teaching philosophy is highly interactive, based on active participation, and I am delighted to welcome you to this vibrant postgraduate learning environment, where you will enter into debate and become a critical thinker, rather than a passive consumer of knowledge.*

**Dr Amanda Klekowski von Koppenfels**  
Academic Director, Brussels School of International Studies





# CONTENTS

<b>The University of Kent/Where the world meets Europe</b>	<b>2</b>	International Relations PhD Political and Social Thought PhD Law PhD Short courses Staff profiles	29 30
<b>Why come to the Brussels School of International Studies?</b>			
Advanced international studies	4	<b>Studying at the Brussels School of International Studies</b>	<b>33</b>
Academic excellence	6	About the Brussels School of International Studies	34
Brussels: the 'capital of Europe'	8	Studying in Brussels	35
Collaborative, interdisciplinary approach	10	Structure of the academic year	36
Excellent facilities	12	Incoming student support services	38
A global community	14	Relocating to Brussels	39
Impressive career prospects	16	Career opportunities	41
		Graduate profiles	42
<b>Academic schools and programmes</b>	<b>18</b>		
Academic schools	19	<b>Resources and facilities</b>	<b>45</b>
Taught degree programmes	21	Academic facilities and learning resources	46
EU External Relations MA		Leisure facilities and support services	48
International Conflict and Security MA		Student activities	49
International Development MA			
International Migration MA		<b>Fees and funding</b>	<b>51</b>
International Political Economy MA		Tuition fees and financial support	52
International Relations MA			
Political Strategy and Communication MA		<b>How to apply</b>	<b>54</b>
Human Rights Law LLM		Entry requirements and applications	55
International Law LLM		Come and visit us	57
Two Capitals			
Taught modules	27		
Research degree programmes	28		
Comparative Politics PhD			
International Conflict Analysis PhD			



# THE UNIVERSITY OF KENT/WHERE THE WORLD MEETS EUROPE

## The UK's European university

The University of Kent is known as the 'UK's European university'. The University was established in Canterbury, the UK's closest city to mainland Europe; we have partnerships with top-ranked institutions across Europe and beyond; most of our degrees offer the opportunity to study or work in Europe; and our global reputation means we attract large numbers of staff and students from around the world, creating a truly international community.

Since ancient times, Kent has been the UK's gateway to Europe; its proximity to the continent has meant that almost all visitors to Britain travelled through the county. But it was St Augustine, who introduced Christianity and founded the first school in Britain in the 6th century, that established Canterbury as a

city of destination and a seat of learning. As the pilgrimage route, the Via Francigena, linked the medieval centres of knowledge from Canterbury to Rome, so the University of Kent has continued these traditions of knowledge creation and dissemination by establishing centres of learning across the continent in Brussels, Paris, Rome and Athens.

Kent's European centres offer programmes that capitalise on the historic, social, political and cultural resources in these exceptional sites, which encourages students and staff alike to expand their knowledge and their professional networks through direct contact and exposure to source materials and expert knowledge.



## Brussels

Advanced international studies in the 'capital of Europe'. Kent is the only UK university to have a centre in Brussels, where we offer postgraduate degrees in international studies. Brussels is home to the main institutions of the European Union, as well as organisations such as NATO, NGOs and think tanks, and staff

from many of these institutions contribute to the teaching at our centre. Studying in Brussels offers opportunities to network, with many students securing internships and careers within prestigious organisations.





### Canterbury

Our campus in Canterbury offers first-class study resources set among green and tranquil open spaces, as well as cafés, bars and entertainment venues, top-quality sports facilities and residential student accommodation. Less than an hour by train from London; within two hours, you can be in Paris or Brussels.



### Medway

Professionally focused programmes supported by state-of-the-art facilities in renovated listed buildings at The Historic Dockyard Chatham. This stunning waterfront location is close to London and has easy transport links to Europe.



### Athens

Our Heritage Management programme combines professional training with the study of archaeology and business, and is offered at the archaeological site of Eleusina, just 30km from one of the world's most ancient cities.



### Paris

Kent's Paris School of Arts and Culture offers interdisciplinary postgraduate programmes in the arts and humanities. Your studies are enhanced by the cultural, linguistic and experiential immersion in this historic city at the heart of European culture.



### Rome

Canterbury and Rome have been linked since the Middle Ages by the pilgrimage route Via Francigena. The study of history, art and archaeology is offered in this centre of classical antiquity.



### Tonbridge

Well-structured and ambitious short courses and postgraduate taster programmes, underpinned by flexible, high-quality teaching in a supportive environment are offered on a part-time basis. The centre also provides continuing professional development courses.



# ADVANCED INTERNATIONAL STUDIES

The University of Kent's Brussels School of International Studies is a specialist postgraduate centre, which offers advanced English language-based degrees covering the spectrum of international affairs.

Our strong links with Brussels-based organisations greatly enhance the teaching on our programmes and you benefit from many opportunities for research, internships and future employment by studying in Europe's centre.

The School promotes a culture of flexibility that enables you to choose a single taught programme or combine two fields of study in line with your interests, leading to a tailored Master's degree that reflects both disciplines. You can also study on a full-time or part-time basis, completing your programme in an intensive 12 months or over several years. We offer course start dates in January and September, as well as short course opportunities.













# ACADEMIC EXCELLENCE

Kent is one of the UK's leading universities. All our academic schools produce research of international standing and our research activities and collaborations with outside organisations create knowledge that is highly influential in many areas.

Our programmes in Brussels are informed by this commitment to research excellence, drawing on the expertise of leading academics in international studies from across the University. Rigorous teaching and experienced research degree supervision is complemented by input from external practitioners from Brussels-based organisations, who contribute to courses in their field or are regularly invited to deliver guest lectures. This means you are able to develop skills and knowledge relevant to contemporary issues.



# BRUSSELS: THE 'CAPITAL OF EUROPE'

Home to the main institutions of the European Union and numerous European and international organisations, such as think tanks, lobby groups, NGOs and multinational companies, Brussels is at the heart of Europe.

As a student of the Brussels School of International Studies, you can earn a degree from a renowned British university while enjoying unparalleled opportunities for networking, academic development and professional advancement facilitated by the School's excellent location in the 'capital of Europe'.

Our students benefit from access to numerous archives, conferences, scholars, experts and practitioners who thrive in the institutions of this world centre of international affairs. In addition, you have the chance to develop your language skills while exploring the historical and cultural highlights the city has to offer. Brussels is also ideally located for easy access to other major European cities.













# COLLABORATIVE, INTERDISCIPLINARY APPROACH

At the Brussels School of International Studies, we revel in diversity, applying insight from a wide spectrum of knowledge to specific problems.

We host three academic schools of the University of Kent and we allow you to specialise in one programme while informing your personal approach to international studies with courses spanning such disciplines as political science, law, sociology, history and economics.

We strongly believe that teaching and learning should be a collaboration. The School represents not only a partnership of staff and students and of faculty from different disciplines, but also a collaboration among professional academics and academics who are practitioners in the institutions of global governance. This provides you with a holistic view of your subject and an interdisciplinary approach to international studies.





# EXCELLENT FACILITIES

The facilities and learning resources available in Brussels enable you to achieve your full potential and gain the most from your studies.

We have our own purpose-designed facilities, including academic offices, a student common room and teaching rooms, as well as access to IT facilities, reference books and journals. Students at the Brussels School of International Studies are able to utilise campus facilities of our partner universities, Vrije Universiteit Brussel (VUB) and the Université Libre de Bruxelles (ULB), giving you access to a wide choice of libraries, sports and leisure facilities, and language classes.

In addition, you have ready access to numerous general and specialist public and private libraries suitable for postgraduate study. There are also many opportunities for students to interact with the international institutions in Brussels, through guest lectures, workshops, conferences, policy review committees and specially arranged tours.















# / A GLOBAL COMMUNITY

Our international reputation means that we attract staff and students from around the world, creating a cosmopolitan atmosphere and an inspiring student experience.

The composition of our staff and student body in Brussels is overwhelmingly international. Our faculty is drawn from nearly every continent and our students represent 55 different nationalities. This diverse academic community creates a stimulating intellectual and social environment, giving you the chance to hear the perspectives of many different nationalities and to develop a truly global approach to your studies.



# IMPRESSIVE CAREER PROSPECTS

Whatever your career goal, a postgraduate qualification from the University of Kent equips you with an impressive portfolio of skills, specialist knowledge and practical experience to help you succeed in a competitive job market.

Students in Brussels do extremely well in terms of entering their chosen careers shortly after graduation. Possible options include working for EU institutions, NGOs, the diplomatic services, the United Nations or in fields related to public policy, public relations, international commerce, finance, government and law.

The University is dedicated to helping students develop transferable skills through their studies and we have our own careers adviser in Brussels who can provide advice tailored to the needs of each student. The Brussels School of International Studies has also developed strong links with the Brussels community, which means many of our students are able to improve their professional skills and gain real-world experience through a range of internships and voluntary work opportunities.











# ACADEMIC SCHOOLS AND PROGRAMMES

*In this section*

19 / Academic schools  
21 / Taught degree programmes  
27 / Taught modules

28 / Research degree programmes  
29 / Short courses  
30 / Staff profiles



# ACADEMIC SCHOOLS

**The Brussels School of International Studies (BSIS) hosts three academic schools of the University of Kent to facilitate collaborative teaching and research. This means students on our programmes benefit from a stimulating and truly interdisciplinary approach to their studies.**

## School of Politics and International Relations

Kent's School of Politics and International Relations is one of the most dynamic places to study politics and international relations. We combine high-quality teaching with cutting-edge research in a supportive environment that welcomes students from all over the world. All programmes are informed by the latest research and scholarship, and are taught by academic staff who have internationally recognised expertise in their field.

### Academic excellence

The School has a good track record of research excellence. In the most recent Research Excellence Framework, politics and international studies at Kent was ranked 15th in the UK for research power; 96% of the research submitted was judged to be of international quality.

Staff generate a vibrant research culture, which has led the School to achieve international excellence in many areas of the discipline. Leading professional journals such as *Global Society* are edited or co-edited in the School. The strength of the School's research culture is reflected in the numerous books and articles published and in the existence of three core research groups: Conflict, Security and Human Rights; Comparative Politics; and Political and Social Thought. The School is also home to four research centres: the Conflict Analysis Research Centre (CARC); the Centre for Critical Thought (CCT); the Centre for Federal Studies (CFS); and the Global Europe Centre (GEC).

The School is internationally renowned for its expertise in international conflict analysis and has built on this reputation, developing its knowledge and elaborating its capacity for research, teaching and consultancy. Members of academic staff have been involved in the hallmark 'Problem-solving Workshops' in a variety of conflicts, including Cyprus, Moldova, Northern Ireland and South Africa. The School's Conflict Analysis Research Centre brings together academics and students from UK universities and abroad who are particularly concerned with studies of international mediation and act as facilitators in inter-communal and international conflicts.

### Programmes of study

The School has been offering the MA in International Relations since 1978, making it one of the oldest in the UK. The MA programmes in the area of international conflict analysis are

consistently ranked among the best worldwide. The School now offers Master's degrees in International Political Economy, Political Strategy and Communication, EU External Relations, and International Migration. These are speciality degrees of BSIS, which have been designed to incorporate theory and practice in an interdisciplinary approach, as well as to take advantage of our excellent location in Europe's capital. The teaching in Brussels is conducted in English by members of staff from Kent; staff of international reputation at two other European universities, the KU Leuven and the University of Bamberg; or members of Brussels institutions, such as NATO and the Council of the European Union.

Our programmes are interdisciplinary, and you have the opportunity to combine your chosen degree with a secondary specialisation from one of the other degrees offered at BSIS, allowing you to study one subject in the context of another. For more information, see p21.

## Kent Law School

Kent Law School is a centre of world-class critical legal research, offering a variety of innovative and interdisciplinary taught and research degrees with an international and contemporary focus.

### Academic excellence

Based on our results in the most recent Research Excellence Framework, law at Kent was ranked 8th in the UK for research intensity by the *Times Higher Education*. Kent Law School has a long tradition of critical and socio-legal approaches to law and, in the field of international law, this research is concentrated in the dynamic Centre for Critical International Law (CeCIL).

Kent Law School is dedicated to high-quality and innovative teaching. At postgraduate level, this is evidenced by the interdisciplinary nature of our teaching and research, with students in Brussels regularly benefiting from the knowledge of key political policymakers, complementing their knowledge and understanding of international law and human rights law. Students at Kent are immersed in a supportive and active culture of critical research, developing their intellectual and legal knowledge and insight.

### Programmes of study

The Law School has been offering postgraduate taught programmes for many years in subjects

## Student profile



## RAPHAEL WOLFF PhD INTERNATIONAL RELATIONS

### What are you researching?

My research focuses on the possibility of using the notion of legitimacy as a tool for radical critique of contemporary security dynamics and politics. This means I am looking at the different ways in which the issue is brought up in discussions of security policy and to what effect, in particular in the EU.

Being in Brussels to carry out my research offers me the opportunity to see the intricate mechanics of EU decision-making up close. This has been the main reason for coming to BSIS.

### What have you particularly enjoyed about studying at BSIS?

The University of Kent's Brussels School of International Studies is a small-scale centre with an intimate atmosphere. This gives ample opportunity to interact with the staff and fellow students. So, there is always someone to discuss your research with. Moreover, the wide variety of topics that people work on make for very productive and illuminating discussions.



## Student profile



### ROOS VAN DEN BOGAARD MA INTERNATIONAL MIGRATION

#### What attracted you to BSIS?

I chose BSIS for a few reasons. Firstly, the location: studying International Migration in Brussels gives you the opportunity to get in touch with a large variety of different organisations and institutions working on the subject of migration. Secondly, it is a smaller-sized school, so you get to know your fellow students and teachers, which is a nice environment to study in. And lastly, because of the diverse group of students, which is especially interesting if you are studying a subject such as International Migration.

#### Did you gain any industry experience?

Yes, during my second term I did an internship at the EU Rights Clinic as part of the EU Migration Law module. The internship gave me the opportunity to put into practice the knowledge I gained from the module. The internship requires you to join meetings once a week and prepare some work at home for the duration of one term. This experience has definitely been an asset to my second term at BSIS.

#### Any advice for those thinking about taking this course?

The MA International Migration is definitely worth considering for those interested in studying migration in a holistic manner while living in an international, dynamic environment. Being in Brussels while studying enables you to combine classes with interesting visits and events taking place in the city on a regular basis.

such as international commercial law, European law, medical law, criminal justice and environmental law.

At BSIS, we offer the following two LLMs: Human Rights Law and International Law. These LLMs can be taken as a standalone degree, or you can study International Law or Human Rights Law in the context of another subject offered at the School, such as migration, conflict or political economy (see p21). At BSIS, International Law is taught through case studies in which extra-legal perspectives are always relevant, with an emphasis on contemporary international problems. The Law School also offers modules within a broad range of areas including Trade Law, European Union Law, Migration Law, Law of Armed Conflict and Diplomatic Law (among others).

#### Excellent legal resources

Our electronic law library, and the databases to which students have access within it, is one of the most extensive in the UK. You are able to research historical and contemporary developments in the case law and related academic discourse, and are given training by our Law Librarian to ensure that you are a proficient and efficient legal researcher.

#### School of Economics

The School of Economics is dedicated to excellence in both teaching and research, and offers degree programmes covering all aspects of the subject.

#### Academic excellence

All teaching is research-led and the School has received consistently high ratings in national surveys for both teaching and research. Based on our results in the most recent Research Excellence Framework, economics and econometrics at Kent was ranked 21st in the UK for research intensity by the *Times Higher Education*; 84% of the research submitted was judged to be of international quality. In the national Postgraduate Research Experience Survey, the School scored highly, with 100% satisfaction expressed in the quality of supervision and the research community.

Economics staff have an international reputation in their field – staff members serve as academic advisers and experts to international agencies including the World Bank, the European Commission and the Organisation for Economic Co-operation and Development (OECD).

Staff publish widely on a comprehensive range of topics. The School has its own Discussion papers series, which gives staff an opportunity to publish work in progress, sometimes in conjunction with research students. Many of these papers are later published as journal articles.

#### Programmes of study

The School of Economics offers modules in International and Development Economics at BSIS. This enables you to enhance your chosen MA or LLM degree with Economic aspects.





# TAUGHT DEGREE PROGRAMMES



The Brussels School of International Studies (BSIS) offers a range of taught programmes in international studies so you can choose the degree that reflects your interests. Below is an explanation of what the different degree programmes offer.

## Taught programmes

- EU External Relations MA
- International Conflict and Security MA
- International Development MA
- International Migration MA
- International Political Economy MA
- International Relations MA
- Political Strategy and Communication MA
- Human Rights Law LLM
- International Law LLM
- Two Capitals

## An interdisciplinary approach

BSIS offers a truly interdisciplinary approach to international studies, allowing you to broaden and deepen your knowledge while enhancing your career profile.

Not only does each degree pathway contain a wide choice of modules among its required subjects, but programmes also provide the opportunity to enrol on optional modules extending across such disciplines as political science, law, sociology, history and economics.

Focusing on different aspects of international studies, you select your area of study from the

programmes listed above. You may choose a single programme of study or opt to combine two subjects, focusing on a primary area of interest while exploring a secondary subject. You could, for example, read for an LLM in International Law with International Migration or an MA in International Development with International Conflict and Security.

When making your application, you should choose a single programme of study in the area that interests you most from the above list; you will then have the opportunity to choose a secondary area of specialisation when you enrol at BSIS. For further information on application procedures, see p55.

## Programme structure

Our taught Master's programmes are offered in both a standard 90 ECTS credit format (which comprises six taught modules from your chosen programme's pathway plus a dissertation over 12 months full-time) and an extended 120 ECTS credit format (which comprises nine taught modules plus a dissertation over 18 months full-time). Standard taught programmes are also offered on a part-time basis over two years.

If you are taking a standard taught programme and wish to include a secondary area of focus, you choose three modules from the pathway of your chosen MA/LLM programme and then two modules from the secondary area, plus one further module from the full list of modules offered at BSIS. For the extended programme, you choose four modules from the pathway of your chosen MA/LLM programme and then four modules from the secondary area, plus one further module from the full list of modules offered at BSIS.

All students, irrespective of taught programme format, duration and start date, take an additional compulsory dissertation module, Fundamentals, Dissertation and Research in their first and final terms. For more information on how the academic year is structured at BSIS, see p36.

## EU External Relations MA

**Attendance:** One year full-time (90 ECTS credits), 18 months full-time (120 ECTS credits), or two years part-time (90 ECTS credits).

**Start:** September or January.

**Fees:** See p52.

**Entry requirements:** A first or upper second class honours degree in a relevant subject or equivalent (see p55).

In a rapidly changing world, the European Union (EU) is a key actor. As the largest economy, it is the first trading partner for many countries around the world. But by developing its own foreign and defence policy, it equally seeks to become a crucial diplomatic player. This MA programme responds to an increasing need to study the EU's external relations at an advanced level. The EU is studied in its different dimensions, such as foreign policy, security and external relations law, and also from an outsider's perspective in a context of global change and regional instability.

The programme draws heavily on the presence of the EU and other institutions in the proximity of BSIS and builds on the tradition of inviting high-level diplomats to share their views with students. Key modules are taught by leading experts in the field from both BSIS and the University of Kent's Canterbury campus.

By taking an interdisciplinary and critical look at the EU's international role, this MA programme provides good preparation for careers in diplomacy, research and employment in diverse organisations that deal with the external dimension of the EU.

## Course content

- EU International Relations Law
- European Foreign and Security Policy
- Fundamentals, Dissertation and Research

CONTINUED OVERLEAF



- One module chosen from: EU Politics and Governance; Europe and Global Change; Foreign Policy Analysis; International Relations Theory
- Three optional modules chosen from the full list of modules offered at BSIS
- Dissertation

### Assessment

Assessment is by coursework plus the dissertation.

## International Conflict and Security MA

**Attendance:** One year full-time (90 ECTS credits), 18 months full-time (120 ECTS credits), or two years part-time (90 ECTS credits).

**Start:** September or January.

**Fees:** See p52.

**Entry requirements:** A first or upper second class honours degree in a relevant subject or equivalent (see p55).

Understanding the complex factors of modern conflict and security issues, and fashioning effective and legitimate responses to the major armed conflicts active today is a major challenge for the international community. The MA in International Conflict and Security at BSIS is structured to introduce you to the key concepts and theories necessary to understand the features of contemporary international conflict and security issues. At the same time, it gives you the opportunity, through practical and case-study-driven modules, to learn about conflict prevention and settlement as well as the appropriate ways of managing conflicts peacefully through negotiation and mediation. The programme also provides you with a training specific to working in the field of conflict analysis, such as preparing reports on specific conflicts or security issues, drafting recommendations for policymakers or mediating between conflicting parties.

The programme is also available as a two-year Master's with the first year spent in Brussels and the second year in Canterbury.

### Course content

- Conflict and Security
- Theories of Conflict and Violence
- Fundamentals, Dissertation and Research
- One module chosen from: Critical Approaches to Security; Histories of International Conflict; Law of Armed Conflict; Negotiation and Mediation
- Three optional modules chosen from the full list of modules offered at BSIS
- Dissertation

### Assessment

Assessment is by coursework plus the dissertation.

## International Development MA

**Attendance:** One year full-time (90 ECTS credits), 18 months full-time (120 ECTS credits), or two years part-time (90 ECTS credits).

**Start:** September or January.

**Fees:** See p52.

**Entry requirements:** A first or upper second class honours degree in a relevant subject or equivalent (see p55).

International development is an exciting field of study at the forefront of international affairs, exploring questions of poverty, inequality, social order and global justice. The MA in International Development is a unique interdisciplinary programme taught by academics, practitioners and policymakers to enable you to understand the multifaceted political, economic and legal processes that shape development. BSIS is an attractive home for development studies not just because of its experience and expertise in international studies, but also because of its location in Brussels; the site of various development institutions and agencies at the core of the field.

The MA in International Development seeks to contribute to a critical understanding of contemporary issues in development and provides practical tools for a future engagement. It considers theoretical, practical and ethical issues by interrogating development discourses, objectives

and effects, and by seeking to understand forms of inclusion/exclusion and intervention in societies. Issues covered include economic development, poverty eradication, legal empowerment, public-private partnerships, social entrepreneurship, trade and privatisation, informal economies and finance, and technological initiatives. It also provides you with an interdisciplinary approach to development to allow you to specialise in your field of interest, such as development economics, development and migration, development and conflict, or human rights.

BSIS attracts an exceptionally diverse and active student body that shares an enthusiasm for engagement in global affairs. Our students come from Europe, Africa, Asia and the Americas; many have spent extended periods abroad and/or worked for development institutions. An important forum is the International Development Group, which meets regularly to discuss personal experiences, debate issues in development, invite guest speakers, attend conferences and workshops, and also organise conferences.

The programme is suitable for students seeking to understand the field of international development as well as for practitioners who have substantive experience. It provides conceptual tools and practical skills for a variety of careers in international affairs.

After their studies at BSIS, our students engage in careers in international affairs, including international organisations, NGOs, international business and research institutions across the globe.

### Course content

- Development: Theory and Practice
- The Politics of International Development
- Fundamentals, Dissertation and Research
- One module chosen from: Development Economics; Gender and Conflicts; Law and Development; Migration and Development; State, Market and Society
- Three optional modules chosen from the full list of modules offered at BSIS
- Dissertation

### Assessment

Assessment is by coursework plus the dissertation.

## International Migration MA

**Attendance:** One year full-time (90 ECTS credits), 18 months full-time (120 ECTS credits), or two years part-time (90 ECTS credits).

**Start:** September or January.

**Fees:** See p52.

**Entry requirements:** A first or upper second class honours degree in a relevant subject or equivalent (see p55).

Migrants: the motor of development in a country, or a drain on the economy? A source of vibrant cultural contributions or a threat to local culture? Can a migrant be politically active in his or her country of origin, and also be integrated in his or her host country? How can states best protect migrants' human rights, including those of trafficking victims, while maintaining control





over their borders? What can states legitimately ask of newcomers in terms of integration? What role can migrants or refugees play in helping to develop, or rebuild, their home country after a conflict, natural disaster or independence?

In the MA in International Migration, you ask all of these questions and more. You examine these questions from different actor perspectives and from different disciplinary perspectives. Both theoretical and policy perspectives are studied in order to gain an in-depth, analytical understanding of the issues. Using this approach, you study a wide variety of topics on migration and integration to offer a more comprehensive understanding of the phenomenon of migration and its role in societies today.

The defining feature of the MA programme is its interdisciplinary character. You gain an in-depth understanding of the broader field of migration while being able to specialise in a particular migration issue (for instance, human trafficking, asylum or forced migration, or integration and citizenship, or the transnational engagement of a migrant group in its home country) and to examine the links between migration and fields ranging from development economics and conflict analysis to human rights law or international migration law.

BSIS is an ideal location for studies in international migration. BSIS has an international student body, with around 45 nationalities represented among its 220 postgraduate students. There are numerous migration-related policy briefings and conferences – for instance, at think tanks or the European Parliament. Brussels is also characterised by numerous migration-related NGOs, interest groups and international organisations' EU liaison offices.

The programme is suitable either for students who have recently completed their undergraduate studies or those who have some experience working with migrants/refugees or on migration or related issues.

### Course content

- Migration: Conflict, the State and Human Rights
- Theories of Migration, Integration and Citizenship
- Fundamentals, Dissertation and Research
- One module chosen from: Critical International Migration Law; Gender in Conflicts, Human Security in Forced Migration; Identity, the State and Belonging; Migration and Development; Security and Liberties
- Three optional modules chosen from the full list of modules offered at BSIS
- Dissertation

### Assessment

Assessment is by coursework plus the dissertation.

### International Political Economy MA

**Attendance:** One year full-time (90 ECTS credits), 18 months full-time (120 ECTS credits), or two years part-time (90 ECTS credits).

**Start:** September or January.

**Fees:** See p52.

**Entry requirements:** A first or upper second class honours degree in a relevant subject or equivalent (see p55).

The global economy is contested social and political terrain – more than ever before in history. From the economic 'cold war' between the US and China, social movements opposing globalisation, the turmoil of stock markets across the world to the stand-off between the needs for economic growth, the preservation of the environment and social justice, questions of international political economy are high on the political agenda. Core issues concerning the relationship between the state, market and society – the ways in which different social and economic priorities are managed through policies – have become part of a worldwide debate.

Understanding the emergence of the new global social and economic order is crucial for anyone who wishes to become involved in today's politics at national or international level. Our MA programme in International Political Economy draws on the 'political sociology of world society' approach, which informs much work in international relations at Kent and at BSIS, to offer a highly integrated interdisciplinary perspective on the global economy. You also have the advantage of being able to select from module options offered in related fields, such as international relations, EU external relations and migration studies. The programme provides a balance between technical understanding, policy relevance and historical (and philosophical) context, building close links between political practice and academic analysis. You therefore acquire the knowledge, conceptual tools and analytical skills appropriate for the development of careers in international organisations, governmental and non-governmental organisations in the fields of international trade and finance, political lobbying and advocacy firms, and international business.

We work in co-operation with Brussels-based international institutions, such as the Economics and Security Committee of NATO Parliamentary Assembly, the European Commission and the office of the United Nations Development Programme. Officials from these institutions involve our students in their work or serve the programme as lecturers.

### Course content

- International Political Economy
- State, Market and Society
- Fundamentals, Dissertation and Research
- One module chosen from: Corporate Governance; International Economic Regulation; International Economics; The Politics of International Development
- Three optional modules chosen from the full list of modules offered at BSIS
- Dissertation

### Assessment

Assessment is by coursework plus the dissertation.

## Student profile



### CODY GLEASON MA INTERNATIONAL DEVELOPMENT

#### What attracted you to BSIS?

The programme of study offered here accurately reflects what I want to do in life. I've travelled extensively, advocated for people in my daily life and want to enhance my skills by entering the field of international development. Kent offers courses directly in line with these goals. Also, I was interested in the international environment at the University as well as the range of courses offered.

#### How does postgraduate study differ from undergraduate study?

Postgraduate study gives you the space and opportunity to enhance your knowledge of a subject. You can focus in on your area of interest, and align it with your future career path.

#### How do you think your studies at Kent will affect your employment prospects?

Getting a Master's at Kent has been indispensable to my future career goals. I want to work abroad in an international organisation. Kent provides the right environment, where cultural awareness is as important as a knowledge of world affairs.

#### What advice would you offer to potential students of BSIS?

My greatest two pieces of advice would be the importance of self-motivation – find what you love, read and learn as much about it as possible. Secondly, if you know what you'd like to do in the future, Kent can provide those resources for you, so use them.



## Student profile



### SABRINA IANNAZZONE MA INTERNATIONAL CONFLICT AND SECURITY

#### Why did you choose to study here?

I was working at the European Parliament when I decided to continue my studies. My main criteria of selection were the possibility to stay in touch with my professional network in Brussels and the personal will to gain further knowledge in a well-known school and from highly qualified academic staff. I also wanted to gain more experience in writing research and policy papers in English on a variety of topics and to benefit from excellent research centres. Furthermore, the January intake allowed me to complete my work experience. BSIS at the University of Kent seemed to be the perfect match!

#### What skills have you gained to make yourself more employable?

By the end of my study programme, I will have acquired desirable skills that are necessary to work in a competitive and international job market such as the one in Brussels. Specifically, I refer to analytical and writing skills, advanced research methodology, live case studies, communication and mediation skills. What I have found particularly advantageous is drafting papers that might be a promising 'business card' for potential employers later.

#### What are your future plans?

I am already making applications to work in the European Institutions and NATO. In the shorter term, I am designing my profile in order to work either in research institutes for foreign and security policies or in EU public affairs agencies and companies.

## International Relations MA

**Attendance:** One year full-time (90 ECTS credits), 18 months full-time (120 ECTS credits), or two years part-time (90 ECTS credits).

**Start:** September or January.

**Fees:** See p52.

**Entry requirements:** A first or upper second class honours degree in a relevant subject or equivalent (see p55).

Day after day, we experience what it means to live in an internationalising world. Grasping its essence, however, is anything but evident. The MA in International Relations tries to grasp the complexity of international processes and to offer the necessary tools to understand its different dimensions (political, legal, economic) and the role of various actors (states, international organisations, business). The programme is built on the interaction of theory (how we approach the world), method (how we explore the world) and substance (what we know about the world). You can choose modules from a wide variety of options, allowing you to assemble your personal programme, tailored to your interests and background.

The programme builds on the long tradition of the University of Kent as a leading university in the field of international relations. By offering an MA in International Relations in Brussels, we place this expertise in the unique context of a European and international capital, host to the EU and NATO. More than a context, this aspect of Brussels as hotspot of international policymaking is actively integrated into the programme and reflected in the large number of high-profile diplomats and policymakers lecturing at BSIS.

Students on this programme can opt to spend a term studying at the University's Canterbury campus. The programme is also available as a two-year Master's with the first year spent in Brussels and the second year in Canterbury.

#### Course content

- International Relations Theory
- Fundamentals, Dissertation and Research
- One module chosen from: Foreign Policy Analysis; Global Governance and International Organisation; International Economics; International Political Economy; Legal Aspects of Contemporary International Problems
- Four optional modules chosen from the full list of modules offered at BSIS
- Dissertation

#### Assessment

Assessment is by coursework plus the dissertation.

## Political Strategy and Communication MA

**Attendance:** One year full-time (90 ECTS credits), 18 months full-time (120 ECTS credits), or two years part-time (90 ECTS credits).

**Start:** September or January.

**Fees:** See p52.

**Entry requirements:** A first or upper second class honours degree in a relevant subject or equivalent (see p55).

Politics is the art of expanding the range of the possible – via apt strategy and skilful communication. Brussels has emerged as the largest centre for international media, measured in the number of foreign correspondents. It is also home to thousands of political lobbyists, public relations specialists, political strategists and corporate communications advisers.

Taught by highly research-active academics and experienced practitioners, this MA covers all the leading vocational aspects of the academic study of politics and international relations: political communication, political leadership, strategy, crisis management, political branding and public relations. You have access to modules on political, legal and social aspects of the EU, international organisations and NGO activity. You study with a cosmopolitan body of academics, practitioners and fellow students. The programme offers you an excellent learning experience based on small-group teaching, enhancing your employability and helping to further your career ambitions.

#### Course content

- Political Communication
- Political Strategy
- Fundamentals, Dissertation and Research
- One module chosen from: Critical Approaches to Security; Foreign Policy Analysis; International Diplomatic Law; Negotiation and Mediation
- Three optional modules chosen from the full list of modules offered at BSIS
- Dissertation

#### Assessment

Assessment is by coursework plus the dissertation.

*“The Brussels campus gives students a unique opportunity to live and study in the heart of Europe, surrounded by international organisations, NGOs and lobbying groups. The programmes allow an in-depth study of the fields of international relations, law and migration in a city where decisions are being made that shape our world, within a school that understands them.”*

**Niels Malskær**  
Danish  
MA International Relations





*“The LLM in International Law offers a comprehensive specialisation in international law, firmly rooted in the traditions of the internationally renowned Kent Law School and BSIS. The approach to law as a social science does not preclude the teaching skills and knowledge necessary to become a good lawyer – quite the contrary. We believe that good lawyers are critical lawyers, and this degree offers students the chance to become both.”*

**Professor Harm Schepel**  
Professor of Economic Law

## Human Rights Law LLM

**Attendance:** One year full-time (90 ECTS credits), 18 months full-time (120 ECTS credits), or two years part-time (90 ECTS credits).

**Start:** September or January.

**Fees:** See p52.

**Entry requirements:** A first or upper second class honours degree in law, political science, international relations, sociology, history, gender studies or any social science or humanities subject (see p55). We also consider applications on the basis of relevant work experience.

Taught in the critical tradition of Kent Law School, this LLM examines the theory and practice of human rights law, international criminal law, humanitarian law, transitional justice, migration law and other fields in the context of different policy areas and various academic disciplines. It is particularly suited to those who currently work (or hope to work) in international organisations, NGOs, international law firms and foreign affairs departments.

Kent Law School is a top 10 UK law school renowned for its critical style of teaching, where you learn more than just the black-letter law: we want you to understand how different legal regimes came about and how they may be interpreted, challenged or possibly changed. This is complemented by the real-world advantage of studying for your LLM in the ‘capital of Europe’; mere hours from the International Court of Justice in The Hague, the Court of Justice of the European Union in Luxembourg, and the European Court of Human Rights in Strasbourg.

## Course content

- International Human Rights Law
- Fundamentals, Dissertation and Research
- Up to three modules from those offered by Kent Law School in Brussels, including: EU Constitutional and Institutional Law; European Union Migration Law; International Diplomatic Law; International Economic Law; International Humanitarian Law and International Criminal Law; International Law of the Sea; International Migration Law; International Relations for Lawyers; Law and Development; Law of Armed Conflict; Transitional Justice and Rule of Law Programming
- Two optional modules chosen from the full list of modules offered at BSIS
- Dissertation

## Assessment

Assessment is by coursework plus the dissertation.

## International Law LLM

**Attendance:** One year full-time (90 ECTS credits), 18 months full-time (120 ECTS credits), or two years part-time (90 ECTS credits).

**Start:** September or January.

**Fees:** See p52.

**Entry requirements:** A first or upper second class honours degree in law, political science, international relations, sociology, history, gender studies or a related subject (see p55). We also consider applications on the basis of relevant work experience.

The CIA launches drones to ‘legally’ kill Al-Qaida leaders. An arbitrator rules that anti-smoking policies infringe a bilateral investment treaty. A father is suddenly detained at the airport as his name appears on a no-fly list. After recent decades of rule of law promotion, the need to ‘legally’ harm, detain, profit or pollute has transformed how policy moves are now performed and contested on the world stage. This has elevated the significance of international legal rules for a range of governmental, corporate and societal actors, which all compete to devise legal norms, characterisations and strategies to address global political and economic problems. International law has therefore become a central domain of struggle across a variety of pressing policy challenges, ranging from robotised military strategies, territorial claims spurred by climate change, or the global projection of EU rules, to transnational blacklists.

Our LLM in International Law provides a programme of study that responds to increasing complexity in the international legal order; where international law evolves through transformations such as global counter-terrorism, global value chains, and foreign investment arbitration. Our academic staff are at the forefront of teaching, research and practice in international law, and our LLM modules encompass subfields that range from EU law, public international law, the law of the sea, and the law of armed conflict, to trade and investment law.

CONTINUED OVERLEAF



## Student profile



### TAISUKE SUZUKI LLM INTERNATIONAL LAW WITH INTERNATIONAL RELATIONS

#### Why did you choose to study at BSIS?

Being located in Brussels gives us a number of opportunities to experience internships in the European Parliament, NATO or a variety of NGOs alongside our course. As there are many networking events conducted by BSIS, we can easily meet and talk with experts who are working in those organisations. In addition, since I have planned to search for a job in Europe after graduation, I consider BSIS as an ideal starting point as it provides practical knowledge and access to a lot of international institutions and NGOs related to human rights located throughout Europe.

#### What attracted you to this course?

At BSIS I felt this programme was characterised by diversity, not only in the content of the programme but also in the nationalities of the academic staff and students. I feel having studied with people from many different countries gave me the opportunity to learn and think about issues from a variety of perspectives, which is particularly important in the area of human rights study.

#### What advice would you offer to potential students of BSIS?

Studying at BSIS will be a great experience. Even though classes can sometimes be quite challenging, the academic support helps you succeed. In addition, like-minded people from all over the world become your friends and broaden your horizons with new ideas, thoughts and feelings you never thought you would have.

#### Course content

- Legal Aspects of Contemporary International Problems
- Fundamentals, Dissertation and Research
- Up to three modules from those offered by Kent Law School in Brussels, including: EU Constitutional and Institutional Law; European Union Migration Law; International Diplomatic Law; International Economic Law; International Humanitarian Law and International Criminal Law; International Law of the Sea; International Migration Law; Law of Armed Conflict; Transitional Justice and Rule of Law Programming
- Two optional modules chosen from the full list of modules offered at BSIS
- Dissertation

#### Assessment

Assessment is by coursework plus the dissertation.

#### Two Capitals

**Attendance:** Two years full-time (120 ECTS credits).

**Start:** September or January.

**Fees:** See p52.

**Entry requirements:** A first or upper second class honours degree or equivalent (see p55).

The University of Kent's Two Capitals exchange gives you a unique opportunity to learn about international affairs in a global context. You spend one year at BSIS before moving to, for example, Washington, DC or Beijing for your second year. On successful completion, you are awarded two Master's degrees: one from the University of Kent and the other from the relevant partner institution.

Your chosen University of Kent MA consists of nine taught courses, six of which are taken in Brussels and three of which are transferred from the partner institution, and a dissertation.

You are initially enrolled on one of the MA programmes here at BSIS. You are expected to have completed the taught courses of your chosen programme and have achieved an average of a Merit before applying for one of the exchanges as part of the Two Capitals experience. A decision on whether you may transfer to Two Capitals will be made in May for those students who started their Master's in the previous September.

For further information about the programme, please contact the Admissions Officer on [ukbapplications@kent.ac.uk](mailto:ukbapplications@kent.ac.uk)

*"Studying International Relations with International Law at the BSIS in Brussels, I developed a deep interest in Europe-Asia relations and possibilities for future coexistence, coevolution and co-operation of the two global actors. At the end of my academic experience in Brussels, I was offered a place in the academic exchange programme between BSIS and CFAU (China Foreign Affairs University). This allowed me to spend a semester in Beijing, focusing on Chinese foreign policy, contemporary diplomacy and the bottomless wealth of Chinese culture, heritage and tradition."*

*"The programme gave me a once-in-a-lifetime crash course in the metropolis of a growing global power and exponentially increased my understanding of the truly globalised world we live in."*

**Sabina Carli**  
Slovenian  
MA International Relations

## A TOP UK UNIVERSITY

Kent is a leading university and is ranked 22nd in the UK in *The Guardian University Guide 2018*.



# TAUGHT MODULES

Below is a selection of the modules currently offered on the taught postgraduate programmes.

## African Politics

Convenor: Dr Yvan Guichaoua

## Conflict and Security

Convenor: Dr Maria Mäliksoo

## Corporate Governance

Convenor: Paige Morrow

## Critical Approaches to Security

Convenor: Dr Maria Mäliksoo

## Critical International Migration Law

Convenor: Sian Lewis-Anthony

## Development Economics

Convenor: Professor Phillip Verwimp

## Development: Theory and Practice

Convenor: Dr Yvan Guichaoua

## EU Politics and Governance

Convenor: Dr Vjosa Musliu

## Europe and Global Change

Convenor: Dr Tom Casier

## European Foreign and Security Policy in the 21st Century

Convenor: Professor Richard Whitman

## European Union Migration Law

Convenor: Mr Anthony Valcke

## EU International Relations Law

Convenor: Laurens Ankersmit

## Foreign Policy Analysis

Convenor: Dr Maria Mäliksoo

## Fundamentals, Dissertation and Research

(jointly convened by BSIS staff)

## Gender in Conflicts, Migration and Development

Convenor: TBC

## Global Governance and International Organisation

Convenor: Dr Kolja Raube

## Histories of International Conflict

Convenor: Dr Anna Bara

## Human Security in Forced Migration

Convenor: Dr Amanda Klekowski von Koppenfels

## Identity, the State and Belonging

Convenor: Dr Amanda Klekowski von Koppenfels

## International Diplomatic Law

Convenor: Dr John Heieck

## International Economic Law

Convenor: Dr Chris Downes

## International Economic Regulation

Convenor: Damjan Kukovec

## International Economics

Convenor: Dr Peter Claeys

## International Humanitarian Law and International Criminal Law

Convenor: Professor Yutaka Arai

## International Human Rights Law

Convenor: Professor Yutaka Arai

## International Law of the Sea

Convenor: Professor Erik Franckx

## International Political Economy

Convenor: Dr Albenaz Azmanova

## International Relations Theory

Convenor: Dr Bojan Savic

## International Trade Law

Convenor: Dr Chris Downes

## Law and Development

Convenor: Professor Harm Schepel

## Law of Armed Conflict

Convenor: Professor Yutaka Arai

## Legal Aspects of Contemporary International Problems

Convenor: Dr Sara Kendall

## Migration: Conflict, the State and Human Rights

Convenor: Dr Amanda Klekowski von Koppenfels

## Negotiation and Mediation

Convenor: Dr Juan Diaz

## Political Communication

Convenor: Dr Albenaz Azmanova

## Political Strategy

Convenor: Dr Bojan Savic

## Politics in the Middle East

Convenor: Dr Joost Hiltermann

## The Politics of International Development

Convenor: Dr Bojan Savic

## Power, Interests and Identity in the Asia-Pacific

Convenor: Dr Elena Atanassova-Cornelis

## Public International Law

Convenor: Dr John Heieck

## Public Policy Analysis

(offered by the Vrije Universiteit Brussel and taught by Mihnea Tanasescu)

## Russia in International Affairs

Convenor: Dr Tom Casier

## State, Market and Society

Convenor: Dr Albenaz Azmanova

## Theories of Conflict and Violence

Convenor: Dr Yvan Guichaoua

## Theories of Migration, Integration and Citizenship

Convenor: Dr Amanda Klekowski von Koppenfels

## Transitional Justice and Rule of Law Programming

Convenor: Dr Valerie Arnould

## US Foreign Policy

Convenor: Dr Bojan Savic

Please note: the above module list is not fixed as new modules are always in development and choices are updated yearly. Please see [www.kent.ac.uk/brussels](http://www.kent.ac.uk/brussels) for the most up-to-date information.



# RESEARCH DEGREE PROGRAMMES

**Our cosmopolitan environment, interdisciplinary approach and firm theoretical grounding make the Brussels School of International Studies (BSIS) an ideal place to undertake a PhD degree by research and thesis.**

## Programmes

- Comparative Politics PhD
- International Conflict Analysis PhD
- International Relations PhD
- Political and Social Thought PhD
- Law PhD

## Studying for a research degree

A PhD, also known as a doctorate, is awarded for a substantial piece of supervised research that is worthy of publication and makes an original contribution to knowledge in a particular field. A PhD is a requirement for a career as an academic or researcher. In addition, it has become a qualification valued by many employers who recognise the skills and commitment a PhD requires. Research students benefit from having a supervisory committee, including a main supervisor, to guide and support their research.

## Your supervisor

Your main supervisor will have experience related to your chosen field of research. His/her role is to oversee your progress, give you advice and feedback on your work, share any special areas

of expertise and provide advice on further training opportunities. You will have regular meetings with your supervisor for informal discussion as well as formal feedback on your work.

## Your supervisory committee

All research students are assigned a supervisory committee composed of a main supervisor and other members of academic staff. This system enables you to gain formal access to a broader level of knowledge and support. All candidates for research degrees are expected to present work to their supervisory committee at regular intervals. Members of the supervisory committee provide full feedback on the material presented and ensure research supervision of the highest standard.

## Academic progress

Your progress is carefully monitored by the supervisory committee to ensure that you are well supported and on track to produce a thesis of value to the academic community. Records of formal supervisory meetings are maintained and you will be reviewed at key stages of your degree, including induction, probation, annual and submission reviews.

## Research training seminars

PhD candidates are expected to attend the research training seminars, which provide the opportunity for postgraduate students to meet fellow students and staff members to exchange new ideas and discuss work in progress. These are formal seminars run mainly by students with staff participation. Each term, every PhD student is required to present a piece of work which might be a research outline, the results of a bibliographic search or a field trip report. The seminar provides candidates with experience of presenting their ideas, defending points and gaining a wide range of feedback on their work.

Along with other similar experiences, such as presenting papers at conferences, the seminar helps to prepare you for the viva voce (oral) examination, where you defend your thesis in front of a panel of examiners. This viva takes place following the submission of your thesis and represents a key part of the PhD assessment process.

## Developing skills

Within your academic programme, you gain specialist knowledge in your field and develop your research and analytical skills to the highest level. In addition, all research students have access to transferable skills training co-ordinated by Kent Graduate School. All new PhD students complete a skills review, which they are required to complete online following attendance at an introductory workshop provided in Brussels by Graduate School staff members.

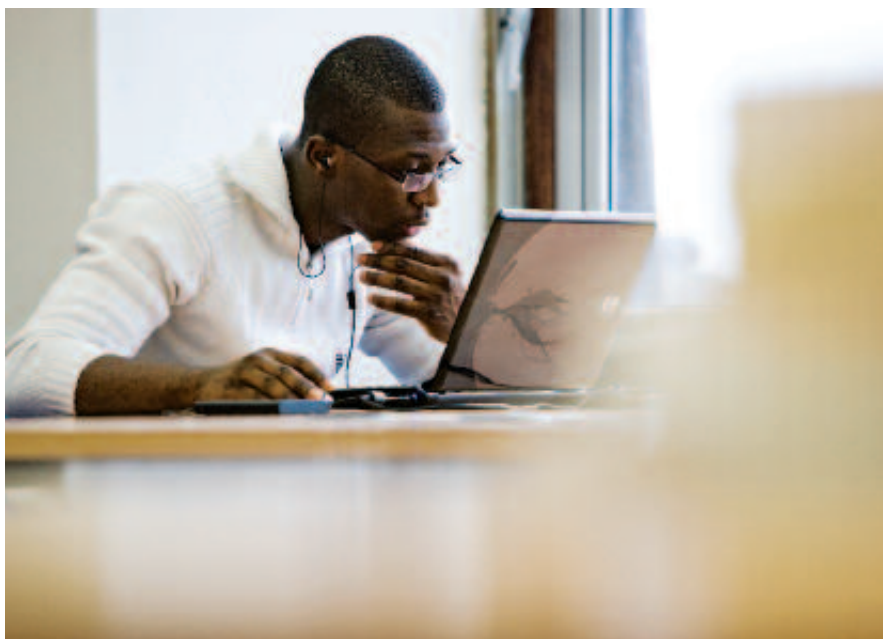
The Researcher Development Programme is comprised of a suite of online training workshops, and PhD students also have the opportunity to visit the Canterbury campus to attend workshops that take place there.

Transferable skills training enhances your career prospects by helping you to develop a range of skills in communication, teamwork, research management, career management and personal effectiveness. The skills training offered at Kent is in line with the requirements laid down by the UK Research Councils and is compliant with the Researcher Development Framework.

For further information, see [www.kent.ac.uk/graduateschool/skills](http://www.kent.ac.uk/graduateschool/skills)

## Entry requirements

Applicants to PhD programmes must have at least a Master's-level degree. For further information on general entry requirements and the application process, see p55.





# SHORT COURSES



**We understand that many people who are working in the various institutions, organisations and government departments in Brussels are not able to commit to even a part-time programme of study. With this in mind, the School runs a number of short courses and summer school programmes.**

## Short Courses programme

This programme enables you to take only the module, or modules, that are of most interest to you, or of most direct relevance to your work or career. You may choose from any of the modules offered at the School at any given time, and receive a certificate of completion for that module. The course fee is on a pro-rata basis (the normal programme fee, divided by seven).

Taking a number of these courses allows you to accumulate sufficient credit to be awarded a formal qualification such as the Postgraduate Certificate, Postgraduate Diploma or even, in exceptional circumstances, the Master's (LLM or MA) in the specialism you have chosen.

## Assessment

Students following these courses must demonstrate, through the normal assessment procedures for each module, successful mastery of the learning outcomes for each module. Assessment methods vary between modules – some are assessed entirely on the basis of coursework and research papers; others through a mixture of papers and a final examination.

To be awarded credit for the module, you must achieve the minimum pass grade. The eventual award of any qualification will be made according to the normal assessment conventions. You must also ensure, in consultation with your individual supervisor, that you have taken the appropriate range of compulsory and optional modules to satisfy the programme requirements.

## Summer courses

Every year, we host a summer school at BSIS with a theme of 'Europe and the World'. This builds upon the academic strengths of the Brussels School of International Studies. Within this context, various sub-themes are covered, including migration, the European Union's (EU) relationship with emerging powers such as China, and the EU's response to the global economic crisis.

Over a period of two weeks, you participate in a series of guest lectures, seminars and debates delivered by academics, policymakers, diplomats and European civil servants. The summer school allows you to discover how the European Union functions, with a particular focus on how it acts as a global organisation and the challenges it faces in today's world. You also benefit from a careers

workshop which gives an insight into a range of employment opportunities, as well as the transferable skills which are attractive to potential employers. To mark the end of the Summer School in Brussels, there is a formal dinner to congratulate students for successfully completing the programme.

This summer school is an excellent opportunity to sample teaching at BSIS and how students integrate into the international environment of Brussels. It is primarily aimed at undergraduate students and those preparing to begin a Master's degree.

## Further information

If you are interested in any of these courses, please contact Admissions by email at [ukbapplications@kent.ac.uk](mailto:ukbapplications@kent.ac.uk)

*“Taking a module in public policy allowed me to enhance my knowledge and skills while working full-time. The flexibility of the programme was ideal for this.”*

**Torsten Holbek**  
Associate Director, Kreab Gavin Anderson



# STAFF PROFILES

**Brussels School of International Studies is proud to count among its distinguished faculty members those featured over the following pages. To browse the profiles of staff in full, please visit [www.kent.ac.uk/brussels/staff](http://www.kent.ac.uk/brussels/staff)**

## Professor Yutaka Arai

### LLB, LLM (Keio), LLM, PhD (Cambridge)

Professor Arai is Professor of Public International Law and International Human Rights Law at the University of Kent. Professor Arai's LLB and first LLM were awarded by Keio University, after which he studied at the University of Cambridge where he was awarded an LLM in International Law and then a PhD for his research on the jurisprudence of the European Convention on Human Rights.

Professor Arai has published widely in international law journals and has been particularly concerned with international humanitarian law (IHL) and international human rights law. His current research includes the drafting records of the Geneva Conventions of 1949 and its two Additional Protocols of 1977, as well as legal philosophical analyses of IHL. His working languages are English, French and Japanese while he has a reading knowledge of German and Spanish for research purposes, and basic reading knowledge of Chinese.

### Key publications

His recent writings include: 'Excessive Collateral Civilian Casualties and Military Necessity: Awkward Crossroads in International Humanitarian Law Between State Responsibility and Individual Criminal Liability' in C Chinkin and F Baetens (eds), *Sovereignty, Statehood and State Responsibility* (Cambridge University Press, 2015); 'Human Rights and Humanitarian Law – Diagnosis of the Complex Interplay' in Mihr and Gibney (eds), *The SAGE Handbook of Human Rights* (Sage, 2014); Chapter on Article 10: Freedom of Expression in Harris et al, *Law of the European Convention on Human Rights, 3rd Edition* (Oxford University Press, 2014); 'A Battle over Elasticity – Interpreting the Concept of "Concrete and Direct Military Advantage Anticipated" under International Humanitarian Law' in Y Haack et al (eds), *The Realisation of Human Rights: When Theory Meets Practice* (Intersentia/Hart, 2014); 'The Margin of Appreciation Doctrine – A Theoretical Analysis of Strasbourg's Variable Geometry' in A Follesdal et al (eds), *Constituting Europe: The European Court of Human Rights in a National, European and Global Context* (Cambridge University Press, 2013); 'Proportionality' in S Shelton (ed), *The Oxford Handbook of International Human Rights Law* (Oxford University Press, 2013); 'Preoccupied with Occupation: Critical Examinations of the Historical Development of the Law of Occupation', *International Review of the Red Cross*, vol 94, 885 (2012); *The Law of Occupation: Continuity and*

*Change of International Humanitarian Law, and its Interaction with International Human Rights Law* (Martinus Nijhoff, 2009).

## Dr Albena Azmanova

### PhD (The New School for Social Research, New York)

Originally from Bulgaria, Dr Azmanova participated in the organisation of the anti-communist student revolts in 1989. She completed her doctoral work in political science in New York, for which she won the Hannah Arendt prize of the New School. She has specialised in EU law at the Institut des Hautes Etudes Européennes in Strasbourg and has taught modern political theory in New York (the New School), Paris (Sciences Po) and Brussels (Vesalius College). Her research and teaching focus on political transitions, social justice, the metamorphosis of capitalism and the transformation of the left-right ideological divide. In parallel to her academic activities, Dr Azmanova has worked as political consultant to international institutions, such as the Council of Europe, the United Nations, the European Commission and the European Parliament.

### Key publications

*The Scandal of Reason: A Critical Theory of Political Judgment* (Columbia University Press, 2012); 'Against the Politics of Fear: On Deliberation, Inclusion and the Political Economy of Trust', *Philosophy and Social Criticism*, vol 37, 4 (2011); 'Capitalism Reorganized: Social Justice After Neoliberalism', *Constellations: An International Journal of Critical and Democratic Theory*, vol 17, 3 (2010).

## Dr Tom Casier

### PhD (KU Leuven)

Tom Casier is a Reader in International Relations and holds a Jean Monnet Chair. He is Deputy Director of the Global Europe Centre, a research centre at Kent. He is also Visiting Professor at the University of Leuven (KU Leuven), where he lectures on political developments in Central and Eastern Europe.

Dr Casier obtained his PhD in Political Science from the University of Leuven with a dissertation on the transformation process in Central and Eastern Europe. From 1990 to 1999, he worked at the University of Leuven, first as a Researcher of the Belgian National Fund for Scientific Research, later as Post-Doctoral Researcher and as Co-ordinator of European Studies. In the following years, he worked as Lecturer at EIPA (European Institute

of Public Administration) in Maastricht and at EHSAL/HUB in Brussels. From 2003 to 2007, he was Assistant Professor at the University of Maastricht, where he was also founding Director of the MA in European Studies.

His research interests include EU–Russia relations, Russian foreign policy, energy and European Neighbourhood Policy/Eastern Partnership.

### Key publications

'From logic of competition to conflict: understanding the dynamics of EU–Russia relations', *Contemporary Politics*, vol 22, 3 (2016); 'Great game or great confusion? The geopolitical understanding of EU–Russia energy relations' *Geopolitics*, vol 21, 4, (2016); 'The EU–Russia Strategic Partnership: Challenging the Normative Argument', *Europe–Asia Studies*, vol 65, 7 (2013); 'The EU's Two-Track Approach to Democracy Promotion: The Case of the Ukraine', *Democratization*, vol 18, 4 (2011); 'To Adopt or Not to Adopt: Explaining Selective Rule Transfer Under the European Neighbourhood Policy', *Journal of European Integration*, vol 33, 1 (2011); 'The Rise of Energy to the Top of the EU–Russia Agenda: From Interdependence to Dependence?' *Geopolitics*, vol 16, 3 (2011).

## Dr Yvan Guichaoua

### BA, MSc (Lille), PhD (EHESS)

Dr Yvan Guichaoua is Lecturer in International Conflict Analysis. He joined BSIS from the University of East Anglia and is a former teaching fellow at Yale University and research officer at the University of Oxford. He has specialised in the dynamics of insurgency formation, rebel governance and state responses in Nigeria, Côte d'Ivoire, Mali and Niger.

Since 2007, Yvan's work has focused on recurring Tuareg rebellions in Niger and Mali and the rise of Jihadism in the Sahel. It pays close attention to the complex interactions between violent entrepreneurs, low-level combatants and civilian populations shaping the success or failure of irregular armed groups as well as the forms of violence they perpetrate.

Yvan engages regularly with the policymaking community (International Crisis Group, World Bank) and is frequently consulted by the media on the Sahelian crisis.

### Key publications

'Tuareg Militancy and the Sahelian Shock Waves of the Libya Revolution' in Cole and McQuinn, *The Libyan Revolution and its Aftermath* (Oxford University Press, 2014); 'Group Formation, Identities and Violent Mobilization: Evidence from Nigeria and Niger' in Justino, Bruck and



Verwimp, *A Micro-level Perspective on the Dynamics of Conflict, Violence and Development* (Oxford University Press, 2013); 'Recruitment in Non-state Armed Groups' in Brown and Langer, *Elgar Handbook of Civil War and Fragile States*, (Edward Elgar, 2013); *The Developmental Challenges of Mining and Oil* (Palgrave, 2012; co-editor); *Understanding Collective Political Violence* (Palgrave, 2011; co-editor).

### Dr John Heieck

#### LLM (Leiden), PhD (Kent)

Dr John Heieck is the Lecturer in Public International Law and International Diplomatic Law at the University of Kent, Brussels School of International Studies (BSIS). He also convenes several workshops in the Fundamentals of Dissertation Research programme at BSIS. In addition, John helps co-ordinate activities of the University of Kent Law School's Centre for Critical International Law (CeCIL) in Brussels.

John holds a PhD in International Law from the University of Kent, Brussels School of International Studies; an LLM in Public International Law from the Leiden University School of Law; a Juris Doctor in Trial and Appellate Advocacy from the Creighton University School of Law; and a Bachelor of Arts in English Literature from the University of Notre Dame. He is also a licensed attorney in the state of Nebraska, USA.

### Key publications

*Everything Within Their Power: The P5's Duty to Prevent Genocide* (forthcoming); *The Duty to Prevent War Crimes: Transforming Russia's Veto Power in the Security Council?* (forthcoming); 'The Responsibility Not to Veto Revisited: How the Duty to Prevent Genocide as a Jus Cogens Norm Imposes a Legal Duty Not to Veto on the Five Permanent Members of the Security Council' in R Barnes and V Tzevelekos (eds.), *Beyond Responsibility to Protect: Generating Change in International Law* (28 March 2016).

### Dr Amanda Klekowski von Koppenfels

#### AB (Harvard), MAGES and PhD (Georgetown)

Dr Klekowski von Koppenfels is Academic Director of the Brussels School of International Studies. Her broad research interests are in the area of the interactions of transnational engagement of migrants with their home countries and, secondly, with citizenship. The first includes the political engagement of migrants in their countries of origin, whether in an understanding of migrant transnational engagement or diaspora engagement. The second includes citizenship status, both acquisition and loss, and the implications of that status for migrants, both in destination and origin countries. Her research interests also include the political participation

of migrants in their host countries. Current research explores these issues through a focus on US citizens as migrants.

She was Visiting Scholar at the Center for European Studies at Harvard University in 2012-13 and a Visiting Professor of Migration and Integration at the Department of Political Science, University of Vienna (Politics of Inclusion and Exclusion research group) in autumn 2009. She has consulted for the International Organization for Migration, among others. Prior to coming to BSIS, Dr Klekowski von Koppenfels was Research Officer at the International Organization for Migration in Geneva, where her research focus was on the trafficking of human beings for sexual exploitation. She has also taught in the Research Group for Migration at the Institute for Political Science at the University of Münster (Germany).

Dr Klekowski von Koppenfels continues research on Aussiedler migration to Germany as well as maintaining an interest in the topic of human trafficking. She is also interested in the interaction between formal and substantive citizenship and the interaction between integration and transnationalism. She has conducted both qualitative and quantitative research.

### Key publications

'Gastarbeiter Migration Revisited: Consolidating Germany's Position as an Immigration Country' in Lafleur and Stanek (eds), *South-North Migration of EU Citizens in Times of Crisis* (Springer Open, 2016); "'Gotta Go Visit Family": Reconsidering the Relationship Between Tourism and Transnationalism', *Population, Space and Place* (2015); *Migrants or Expatriates? Americans in Europe* (Palgrave Macmillan, 2014); 'Migration von AussiedlerInnen: Wandel der politischen Perspektive' in Menzel and Engel (eds), *Rueckkehr in die Fremde* (Frank & Timme, 2014); "'The Distance Between Us": A Comparative Examination of the Technical, Spatial and Temporal Dimensions of the Transnational Social Relationships of Highly Skilled Migrants', *Global Networks*, vol 15, 2 (2014); 'Testing for Integration and Belonging or a New Barrier to Entry? Citizenship Tests in the United States and Germany' in Atac and Rosenberger (eds), *Politik der Inklusion und Exklusion* (V&R unipress, 2013); 'From Germans to Migrants: Aussiedler Migration to Germany' in Tsuda (ed), *Diasporic Homecomings* (Stanford University Press, 2009).

### Dr Maria Mälksoo

#### PhD (Cambridge)

Dr Maria Mälksoo is Senior Lecturer in International Security at the Brussels School of International Studies, University of Kent where she currently convenes the MA programme in International



Conflict and Security. She earned her PhD in International Studies from the University of Cambridge with a dissertation on the Polish and Baltic post-Cold War politics of becoming European. During 2010-16, she worked as Senior Researcher in International Relations at the University of Tartu in her native Estonia. She has been a visiting fellow at the Centre for International Studies, London School of Economics and Political Science (2015), Kone Foundation Fellow at the Helsinki Collegium for Advanced Studies (2012), Mobilitas post-doctoral fellow at the Institute of Government and Politics, University of Tartu (2010-14), and a member of the HERA-funded international collaborative project Memory at War: Cultural Dynamics in Russia, Poland, and Ukraine (2010-13). She has policy experience from the Estonian Ministry of Defence, International Centre for Defence Studies in Tallinn, and the Office of the President of Estonia.

### Key publications

*The Politics of Becoming European: A Study of Polish and Baltic Post-Cold War Security Imaginaries* (London: Routledge, 2010); *Remembering Katyn* (co-author; Cambridge: Polity, 2012). Her research on memory and security politics and IR theory has been published in *Contemporary Security Policy*; *International Political Sociology*; *Review of International Studies*; *European Journal of International Relations*; *Security Dialogue*; *Communist and Post-Communist Studies*; and in various edited volumes.

### Professor Harm Schepel

**Drs (Amsterdam), LL.M (Oñati), PhD (EUI Florence)**

Harm Schepel is Professor of Economic Law at Kent Law School and Director of Law programmes at the Brussels School of International Studies.

His research addresses the legal institutionalisation of capitalism on different levels of governance. The general area includes fields such as international trade and investment law; law and development; corporate governance; the law of the European internal market; comparative and European competition law; and the regulation of private governance regimes.

He has held visiting research positions at the University of Amsterdam and Columbia Law School, and has taught, among other places, at the Catholic University of Portugal, the University of Palermo, Maastricht University, and the EUI Academy of European Law. He is an editor of the *European Law Journal*.

Professor Schepel holds a degree in International Legal Studies from the University of Amsterdam, and an LL.M magna cum laude from the International Institute for the Sociology of Law in Oñati, Spain. His doctorate degree is from the European University Institute, Florence, where his dissertation was awarded the EUI Alumni Prize for the Institute's best interdisciplinary thesis on comparative and European issues. His monograph *The Constitution of Private Governance* (Hart Publishing, 2005) was a runner-up for the 2005 Peter Birks Prize for Outstanding Legal Scholarship, awarded by the Society of Legal Scholars. Prior to joining Kent Law School in 2000, he was attached

to the Zentrum für Europäische Rechtspolitik at the University of Bremen, Germany and held a Marie Curie Fellowship at the ULB's Centre de Théorie Politique.

### Key publications

'Of Capitalist Nostalgia and Financialisation: Shareholder Primacy in the Court of Justice' in C Joerges and C Glinski (eds), *The European Crisis and the Transformation of Transnational Governance: Authoritarian Managerialism versus Democratic Governance* (Hart Publishing, 2014); 'Freedom of Contract in Free Movement Law: Balancing Rights and Principles in European Public and Private Law', *European Review of Private Law*, vol 21, 5/6 (2013); 'Constitutionalising the Market, Marketising the Constitution, and to Tell the Difference: On the Horizontal Application of the Free Movement Provisions in EU Law', *European Law Journal*, vol 18, 2 (2012); *State and Market in European Union Law* (co-author; Cambridge University Press, 2009); *The Constitution of Private Governance* (Hart Publishing, 2005).

### Dr Bojan Savic

**MA (Maastricht), PhD (Kent)**

Bojan Savic joined the Brussels School of International Studies as Lecturer in International Relations from Elon University, North Carolina.

Bojan received his PhD from the University of Kent at Brussels in 2012 and MA degrees in European Studies (University of Maastricht, 2007) and International Relations (European Institute, Nice, 2008) before joining Virginia Tech's National Capital Region campus in Alexandria, VA as a postdoctoral researcher. His MA and PhD research focused on the formal modeling of intra-alliance relations, culminating with a doctoral dissertation on post-Cold War transformations of NATO's civilian and military structures. His postdoctoral research has combined insights from Critical Security Studies, Critical Geopolitics and International Development.

### Key publications

'Where is Serbia? Traditions of Spatial Identity and State Positioning in Serbian Geopolitical Culture', *Geopolitics* (online); 'Relinquishing and Governing the Volatile: The Many Afghanistans and Critical Research Agendas of NATO's Governance', *Global Discourse: An Interdisciplinary Journal of Current Affairs*; 'How to Persuade Government Officials to Grant Interviews and Share Information for Your Research', *PS: Political Science and Politics*.

### Professor Roger Vickerman

**MA (Cambridge), DPhil (Sussex), Dr h.c., AcSS, FRSA, FCILT**

Educated at the universities of Cambridge and Sussex, and holder of an Honorary Doctorate from the Philipps-Universität, Marburg, Professor Vickerman is an Academician of the Academy of Social Sciences, a Fellow of the Royal Society of Arts and a Chartered Fellow of the Chartered Institute of Logistics and Transport.

His research focuses on the relationship between transport (especially infrastructure), regional development and integration in the European Union. He is particularly known for his studies

on major infrastructure projects, particularly the EU's Trans-European Networks. He is currently working on questions relating to public-private partnerships, regulation in transport and the ex-post analysis of ERDF and Cohesion Fund expenditure on transport. He is a member of the Economic Advisory Panel to HS2 Ltd, which advises the UK government on the development of high-speed rail. He has served as a member of the Standing Advisory Committee on Trunk Road Assessment (SACTRA), as an adviser to Committees of both the House of Commons and House of Lords in the UK Parliament and acted as a consultant to the European Commission, various UK government departments, and regional and local government authorities.

### Key publications

He is the author of six books (including the textbook *Principles of Transport Economics*, with Emile Quinet) and over 150 chapters, journal articles and reports. He sits on the editorial boards of several journals in both transport and regional science and is Editor-in-Chief of *Transport Policy*.

### Professor Richard Whitman

**BA (Oxford Brookes), MA (UEA), PhD (Westminster), AcSS**

Professor Whitman is Director of the Global Europe Centre, an Associate Fellow at Chatham House (formerly known as the Royal Institute of International Affairs) and an Academic Fellow at the European Policy Centre. He regularly writes and researches for think tanks and his most recent publication for Chatham House is *A Diplomatic Entrepreneur: Making the Most of the European External Action Service* (2011).

He was Professor of Politics at the University of Bath (2006-11), Senior Fellow, Europe (April 2006-April 2007) and Head of the European Programme at Chatham House (April 2004 to April 2006). Prior to arrival at Chatham House, he was Professor of European Studies at the University of Westminster, where he was also Director of the Centre for the Study of Democracy from 2001-03.

Richard Whitman is a contributor to leading journals, and has presented many papers and keynote addresses. His current research interests include the external relations and foreign, security and defence policies of the EU, and the governance and future priorities of the EU.

He is on the editorial boards of *European Security* and *Studia Diplomatica*. Professor Whitman is a regular media commentator, working with print and broadcast media at home and overseas. He has been interviewed widely on Europe and European integration. Recent coverage has included BBC radio and television, CNN, Bloomberg, CNBC, Newsweek, Reuters, the *International Herald Tribune* and *The Wall Street Journal*.

Professor Whitman was elected an Academician of the Academy of Social Sciences in October 2007 and from 2009-12 the elected Chair of the University Association for Contemporary European Studies (UACES).

# STUDYING AT THE BRUSSELS SCHOOL OF INTERNATIONAL STUDIES

## *In this section*

34 / About the Brussels School  
of International Studies

35 / Studying in Brussels

36 / Structure of the academic year

38 / Incoming student support  
services

39 / Relocating to Brussels

41 / Career opportunities

42 / Graduate profiles





# ABOUT THE BRUSSELS SCHOOL OF INTERNATIONAL STUDIES

**Kent is the only UK university with a centre in Brussels. The University's Brussels School of International Studies (BSIS) is a specialist postgraduate school offering interdisciplinary teaching and research opportunities in the area of international affairs.**

## Interdisciplinary study

Drawing on the expertise of the University of Kent's School of Politics and International Relations, Kent Law School and the School of Economics, BSIS offers a truly interdisciplinary approach to international studies. Not only does each taught degree pathway contain a wide choice of modules among its required subjects, but programmes also provide the opportunity to enrol on optional modules extending across such disciplines as political science, law, sociology, history and economics.

You also have the option to choose a single taught programme of study or combine this degree with a secondary area of specialisation, enabling you to study one subject in the context of another.

For more information about the academic schools that offer programmes in Brussels, see p19.

## International profile

The variety of programmes available at BSIS, ranging from international migration and conflict studies to law and international relations, is complemented by the diversity of the student body, with some 250 students drawn from over 55 countries. This lends an enormous amount of perspective and richness to the student experience.

We also have excellent links with many organisations based in Brussels, which greatly enhances the teaching on our courses and your opportunities for research, internships and future employment (see p41).

## Expert teaching

The University of Kent particularly prides itself on rigorous teaching, informed by world-class research. This tradition continues in Brussels and is enhanced by the specialised and interdisciplinary nature of the studies offered here.

In addition to Kent's permanent faculty members, BSIS is able to exploit its ideal position in the 'capital of Europe' by employing practitioners working at the cutting edge of their respective fields to share their up-to-the-minute perspective, knowledge and expertise with our students.



## Modern city location

The University has its own purpose-designed centre close to the centre of Brussels. Facilities include academic offices, a student common room, a range of seminar rooms and lecture spaces, as well as access to IT facilities, reference books and a journals collection. We offer students 24-hour secure access to the site and dedicated private work spaces.

The premises are located close to the campuses of our partner universities, Vrije Universiteit Brussel (VUB) and the Université Libre de Bruxelles (ULB). BSIS students have access to the facilities on these campuses, including libraries, public computers, bars, cafés and sports facilities (see pp46-48 for more details).

## University of Kent

The University of Kent was granted its Royal Charter in 1965 and has subsequently achieved prominence as one of Britain's most innovative and research-intensive universities, with particular strengths in (among many other subjects) international relations and law.

The University's biggest campus is located in the historic city of Canterbury, easily reached from Brussels by train, and is organised around six 'colleges'. If you are pursuing a postgraduate degree at the University, you will automatically become a member of Woolf College, Kent's postgraduate-only college. BSIS students also benefit from the support of the Graduate School, which is dedicated to enhancing postgraduate

activity at Kent. The Graduate School co-ordinates a comprehensive programme of transferable skills training and provides many opportunities for postgraduate students from all Kent's locations to meet and socialise.

Brussels students have full use of the facilities in Kent – including the outstanding Templeman Library – and many choose to travel there to make use of Kent's facilities for their research, for conferences and also for our annual football (soccer) match between the two campuses.

## Accreditation

All degrees and certificates awarded for study on any programme at BSIS are awarded by the University of Kent and are conferred by the University at its normal Congregation ceremonies held in Canterbury Cathedral.

The delivery of programmes, in the UK and at the University of Kent centre in Brussels, remains subject to routine audits by the UK Quality Assurance Agency to ensure the highest national and international standards.

Master's degrees obtained from Kent are suitable for entry to the PhD programmes in the UK or the US (provided the candidate has performed to an appropriate level). The Master's degrees obtained at BSIS are of the highest standard, comparable to any obtained in the US or UK.

# STUDYING IN BRUSSELS

**One of the main advantages for any student at the University of Kent's Brussels School of International Studies is the ability to study in Brussels, the 'capital of Europe'. The School is located close to the heart of Brussels, the political and diplomatic power centre of the continent.**

## Access to international institutions

Brussels is not only home to the European institutions – including the European Commission, European Council and European Parliament – but it also hosts NATO, the Supreme Headquarters of the Allied Powers of Europe (in nearby Mons), nearly 700 multinational corporations and over 1,000 international organisations. These institutions make Brussels the hub of one of the largest and most diverse diplomatic communities in the world, and ensure that the Brussels policy environment and political culture is enriched by a profusion of NGOs, think tanks, interest groups and the world's largest international press corps.

During your studies in Brussels, you interact with these international institutions through guest lectures, workshops, policy review committees, and specially arranged tours. In addition, we host seminars, conferences and high-level guest speakers, which draw on Brussels' role as the policymaking centre of Europe and one of the world's diplomatic focal points. These events, combined with those hosted by other institutions in Brussels, give you an unparalleled opportunity to explore both Europe and the wider foreign policy world.

In addition, current and former students have held internships and jobs at all major EU institutions, NATO, Hill and Knowlton, Ogilvy & Mather, Weber Shandwick and the American Chamber of Commerce in Brussels. Following their studies, our alumni have found employment in Brussels in international companies and organisations, such as the International Crisis Group, Care International, Europe Analytica, the EastWest Institute, the International Organization for Migration, the Centre for European Policy Studies, and Corporate Social Responsibility Europe. For further information on internships and employment opportunities, see p41.

## Excellent language-learning opportunities

The possibility of learning new languages during your postgraduate studies can be essential for building a future career in international affairs. In a cosmopolitan city such as Brussels, there are many opportunities for language learning. A private tutor offers French classes at the School, which are organised according to student ability.

For more formal language classes, in French, Dutch or many other languages, you can choose to study at our partner institution the VUB, whose campus is

next to ours. For more information, please visit <https://my.vub.ac.be/en/acto/english-acto-home>

As a community with many expatriates (about a third of the city's total population), Brussels is filled with speakers of many languages and there are a number of private schools and agencies offering language courses.

## Superb location

The Brussels School is a 15-minute drive from the city centre and there are excellent metro, bus and tram links which make travel around the city easy. Brussels is also located close enough to many European cities to allow convenient travel for day and weekend excursions. Destinations such as London, Paris, Amsterdam and Cologne are all around two hours away by high-speed train.

## Cultural capital

Brussels also offers a huge range of cultural sites and activities, including interesting architecture, music and film festivals, exhibitions ranging from contemporary art to medieval crafts, and a great number of cafés, restaurants and bars serving up both international and traditional Belgian fare. There is no shortage of places to sample the world-class chocolates and hundreds of varieties of beers for which Belgium is renowned. Brussels is also an excellent place to shop, offering everything from large gallery shopping centres to local weekly markets.

As well as being a regional, federal and European capital with its own offerings, such as museums (more than 80), galleries, theatres and exhibitions, Brussels is ideally positioned to reach Europe's other popular cultural and historical landmarks.

We also organise annual field trips for our students to locations of historic and political importance, such as Waterloo, Normandy, the International Criminal Tribunal for the Former Yugoslavia in The Hague and the International Organization for Migration in Geneva.

*"My time at BSIS was invaluable, giving me the opportunity to become involved in the areas that interested me. If you want to study international issues, doing so in Brussels gives you a clear advantage."*

**Melika Zhar**  
British  
MA International Relations





# STRUCTURE OF THE ACADEMIC YEAR



**The teaching year comprises two 12-week teaching terms and one six-week teaching term. Teaching term dates are harmonised across the University's different locations which facilitates the movement of staff and students between the two locations.**

## Hours of study

All taught Master's programmes consist of a total of 1,800 hours of study. Each module represents 180 hours of study. You have classroom contact with each of your teachers (in lecture/seminar format) for at least two hours a week for each course. A further 13 hours of private study is required for each module each week. You spend the balance of the hours attending a range of academic activities and working on your dissertation.

## Mode of study

### Full-time

The majority of students reading for the MA or LLM programmes at BSIS are full-time students. As a full-time student, your programme will last for 12 months, carrying a total of 90 ECTS (European Credit Transfer System) credits. You select three modules per term from your programme's pathway. You also attend the preparatory Fundamentals, Dissertation and Research lectures and seminars – these provide the necessary foundation and tools to enable you to construct a line of enquiry, create a research design, understand the different kinds of arguments you can make when writing a

dissertation and discern the appropriate methodology and conceptual framework that flows from that choice of argument. This allows you to conduct independent research and scholarship at the level appropriate for a graduate school in all of the taught fields of study.

### 120 ECTS credit option (extended programme)

All taught Master's programmes are also offered in a 120 ECTS credit format, which comprises nine taught modules plus a dissertation over 18 months.

The extended programme allows you to study your subject in greater detail, with the opportunity to choose a wider range of modules. You also have the chance to spend one term at the Canterbury campus. The programme is ideal for students who require extra credits or would like to have more time to pursue an internship.

For some programmes, a two-year Master's with the first year spent in Brussels and the second year in Canterbury is also available (see under Mobility of study location on the opposite page). For further details, please contact Admissions at [ukbapplications@kent.ac.uk](mailto:ukbapplications@kent.ac.uk)

## Part-time

Part-time study is currently only open to those who hold EU citizenship. There is considerable flexibility in teaching arrangements to accommodate the needs of students who wish to combine employment or other commitments with a part-time degree programme. Part-time students complete the normal curriculum of six modules over a period of 24 months, in a sequence to be arranged in consultation with their programme convenor. Fundamentals, Dissertation and Research is taken during the second year of study; the dissertation is submitted at the end of this second year, which permits part-time students two summer recesses in which to complete it.

### Term dates

#### 2017/18

Term 1	Mon 25 Sep – Fri 15 Dec 2017
Term 2	Mon 15 Jan – Fri 6 Apr 2018
Term 3	Mon 7 May – Fri 15 Jun 2018

#### 2018/19

Term 1	Mon 24 Sep – Fri 14 Dec 2018
Term 2	Mon 14 Jan – Fri 5 Apr 2019
Term 3	Mon 6 May – Fri 14 Jun 2019

#### 2019/20

Term 1	Mon 23 Sep – Fri 13 Dec 2019
Term 2	Mon 13 Jan – Fri 3 Apr 2020
Term 3	Mon 4 May – Fri 12 Jun 2020

**Table 1: Full-time September students**

Term 1: Sep-Dec	• Three modules	• Guest seminars	• Workshops	
Term 2: Jan-Apr	• Three modules	• Guest seminars	• Workshops	• Student conference
Term 3: May-Jun	• Examinations	• Dissertation supervision		
Summer recess	• Dissertation writing			
September	• Submission of dissertation			
	• Examiners meeting and formal completion of the programme			

**Table 2: Part-time academic cycle**

	<b>Year 1</b>	<b>Year 2</b>
Term 1: Sep-Dec	• One module or two modules	• Remaining one or two modules
Term 2: Jan-Apr	• One module or two modules	• Remaining one or two modules
Term 3: May-Jun	• Examinations	• Examinations
Summer recess	• Initial dissertation preparation	• Dissertation supervision
	• Initial dissertation preparation	• Dissertation writing and submission

**Table 3: Full-time January students**

Term 1: Jan-Apr	• Three modules plus other academic activities
Term 2: May-Jun	• Dissertation supervision plus other academic activities
Summer recess	• Students may work on the dissertation, or undertake summer internship
Term 3: Sep-Dec	• Three modules plus other academic activities
January	• Examinations
April	• Submission of dissertation
June	• Examiners meeting and formal completion of the programme

As most modules consist of a one-hour lecture and a one-hour seminar each week, in addition to the reading and preparation which is done on an individual basis, part-time students are able to consolidate substantially the amount of time they spend on site. Many of the University's modules are offered in the evenings, with a one-hour lecture followed by a one-hour seminar, enabling part-time students who are studying and working concurrently to fit the programme conveniently into their schedules.

## Date of entry

### Taught programmes

All students may begin the MA and LLM programmes in either September or January. Although the majority begin their programmes in September, some students may wish to take a few months away from their studies between the completion of their undergraduate degree and the commencement of postgraduate studies, in which case beginning in January is a practical alternative. Part-time students may also find it convenient to have the opportunity to begin in January.

Applicants considering a January start should note that both the rhythm of the academic year and the overall duration of the programme is different from that of students who opt to begin in September. However, students who begin in January have more opportunity to undertake an internship over the summer recess without pressure of other programme commitments.

For students who begin in September, the 12-month programme is organised as shown in Table 1, above. Part-time students beginning in September would follow the programme outlined in Table 2, above.

By contrast, for a student who begins in January, the programme extends to 18 months in order to accommodate the examination cycle. You must sit the examinations as a precondition for being permitted to progress to the dissertation. The programme for January entry is shown in Table 3, above.

If you choose to begin the programme in January, you should also note that for the purposes of some scholarships and loan schemes, the period of registration will be from January to June, followed by an unregistered period from June to September, followed by a second period of registration from September to April. Applicants should note that the months in which they are unregistered may be unsupported by their financial aid.

### Research programmes

Research students may begin their programme at the start of any month by mutual agreement.

### Mobility of study location

The harmonised structure of the teaching year means that students reading for either the MA in International Relations, the MA in International Conflict and Security, or the LLM in Human Rights

Law (the three programmes that are also offered at the Canterbury campus) may choose to spend a term in Canterbury. Likewise, a student from Canterbury may choose to spend a term in Brussels while, for example, pursuing an internship.

Students enrolled on the extended programme have the opportunity to spend an entire year in Brussels and then spend a term studying at the Canterbury campus. The option to spend a term in Canterbury is also available on most of our degree programmes.

For further information regarding mobility of study location, please contact Admissions at [ukbapplications@kent.ac.uk](mailto:ukbapplications@kent.ac.uk)

## FLEXIBLE STUDY

Teaching at our Brussels School is designed to be flexible, allowing you to balance your studies with other commitments. Our programmes are offered on a full or part-time basis, with start dates in January and September, and you now have the opportunity to combine two areas of study in one degree. We have also recently developed a programme of short courses and summer schools (see p29).



# INCOMING STUDENT SUPPORT SERVICES

**We recognise that preparing for postgraduate study in another country – as is the case for the great majority of our students – can be both exciting and daunting. With this in mind, we provide incoming students with many support services and resources in order to answer questions, address concerns and make the transition to Brussels and your studies with us as smooth as possible.**

## Incoming student list-serve

The incoming student list-serve is an automatic electronic mailing list, created for each incoming class in order to disseminate useful information, facilitate contact between students and provide a forum for asking general questions. Information on accommodation, student visas, health insurance, enrolment, Welcome Week and many other topics useful in preparing for the move to Brussels is sent regularly through the list-serve. Notices of flat-shares and apartments for rent in Brussels are also sent to incoming students through the list-serve. In addition, the list-serve enables you to introduce yourself to your future classmates in order to get to know them before the start of term and to arrange flat-shares.

## Facebook group

Each year, we set up a closed Facebook group for all new applicants to BSIS. The group provides a good opportunity to learn more about Brussels, get to know your classmates ahead of the new term and start your accommodation search. You will receive an invite to join the group once you have been made an offer of a place to study at BSIS.

## BSIS Survival Guide

The BSIS Survival Guide has been created by the BSIS Graduate Student Union (BGSU) (see p50) and Admissions staff to provide as much information as possible to assist you in the relocation process and to help you settle in Brussels as quickly as possible. The Guide is available to download several months before the start of your studies to give you time to consult it while preparing for the move to Brussels.

The Guide is highly practical and informative, covering such topics as health insurance, the search for accommodation, transport in Brussels, registration at the local commune, medical facilities and banking. It also includes campus maps of our two partner universities, the Vrije Universiteit Brussel and the Université Libre de Bruxelles, as well as English translations of the most commonly used terms when searching for accommodation.



## Suggested reading list

To allow you to familiarise yourself with the essential texts for any programme of international studies, a suggested reading list is sent to you in the months before the term begins, also through the list-serve. The list contains core readings in the fields of international relations and international law, which are relevant to all of the programmes offered at BSIS; some may also be part of the syllabus of certain modules.

This list proves especially useful if you have not studied international relations as part of your undergraduate degree, or if it has been several years since you studied the subject.

## Tuition payment handbook

Planning finances early is always a good idea. To allow you to plan for the payment of your tuition, a tuition payment handbook is sent through the list-serve, which outlines the methods and modes of payment available. You may choose from one of several payment plans so that you know in advance when each payment instalment is due.

## Current Student Liaison Programme

It is often helpful for postgraduate study to gain the perspective of a current BSIS student. The Current Student Liaison Programme connects you with current students who have gone through the process and have volunteered to share tips and insight. Incoming students have often found it useful to correspond with someone following their programme, someone with a similar undergraduate degree, or someone from their home country.

## Welcome Week

To help you settle in Brussels as quickly as possible and prepare you for academic study at the University, a programme of administrative, academic, practical and social orientation events is held the week before the start of term. Participation in Welcome Week enables you to start the academic year smoothly and effectively, and provides you with the required practical and academic tools to begin your programme in the best conditions.

# RELOCATING TO BRUSSELS

**The majority of students studying at the Brussels School of International Studies come from outside Belgium. While studying abroad – and especially studying international affairs abroad – provides a unique and horizon-broadening experience, we recognise that the prospect of taking care of practical issues such as visas, accommodation and transport can be a little daunting.**

Below, you will find information on several key practical issues that international students should consider when planning for their studies with us.

## Visas and residency

If you are not a resident of the EU or of a Schengen country, you will require a visa to study in Belgium. There are several exceptions to this requirement (ie dual nationality, diplomatic passport, etc). Prospective students who are unsure if they will require a visa are asked to check with their local Belgian consulate or embassy. American students should be aware that a visa application will require an FBI background check; as this will add extra time to the process, it is important to apply early. See Belgium's Federal Public Service website: <http://diplomatie.belgium.be/en> for visa-related and other useful information. During the application process, the admissions team will provide detailed help with the practicalities of the visa application process, but the Belgian Embassy is the best first point of contact.

## Accommodation

Brussels offers many options for students looking to secure low-cost accommodation and is one of the most affordable capitals in Western Europe. One element that makes the search for housing easier is the flexibility of the Brussels housing market. As there are many students and people working as *stagiaires* at the European Parliament, NATO and other institutions, there are usually people leaving their apartments who are looking for others to take over their leases.

The prices tend to be reasonable due to this large availability. Studio apartments with all charges included (water, electricity, gas, tenant charges) can be found for around €600-750 per month, and a one-bedroom all-included for around €650-900 per month. Most students choose to share an apartment and this will cost approximately €380-550 per month, including utilities. Notices of available apartments, many of which are being vacated by outgoing BSIS students, are also sent through the list-serve, or online via the secure Facebook group, which is set up each year for incoming students (see opposite page), or via our housing blog, which includes a long list of options with trusted landlords.

You can usually locate an apartment within a few days of arrival. One of the best ways to do so is to walk around a neighbourhood that you like and write the phone numbers of listings posted on doors of buildings. This is quite a common practice in Belgium, and students find that the majority of people speak at least some English. As the University of Kent's facilities in Brussels are conveniently located close to the student district between the Vrije Universiteit Brussel and the Université Libre de Bruxelles campuses, much of the housing within a short walking distance of the University is designed for students in layout and price.

## Transport links

Brussels has an excellent public transport system, which makes it easy to get around the city quickly. Buses, trams and metros run on a regular schedule and are generally very reliable.

To ride the bus, tram or metro, you need to purchase a ticket. Single 'jump' tickets can be purchased on any bus or tram. When riding the metro, you can purchase a single 'jump' ticket in the station where you take the metro, either from the ticket windows or from the automated machines (which have an English language option). Monthly and annual passes can also be purchased at a reduced cost.

Brussels also offers connections to many European destinations via the Eurostar, Thalys, TGV and InterCity Express (ICE) train services. There are direct trains to cities such as Amsterdam, Paris, London, Cologne, Frankfurt, Lyon and Marseilles.

Air travel in and out of Brussels also makes travel easy. Most international flights go through Brussels-National at Zaventem, easily accessible by the Airport-Express bus or by one of the trains that stop in Gare Centrale and Gare du Midi (both of which are on a metro line). Low-cost carriers have made Brussels South Charleroi Airport a hub.

## Living costs

In planning for study in Brussels, it is useful to have a guide to approximate living costs. Luckily, Brussels is still a relatively easy city to live in on a budget. You should be able to live within the limits set out in the table below, but some students may spend more or less than indicated.

Average costs per week		From	To
Accommodation	(including utilities)	€81.00	€196.00
Study costs	Books and materials	€5.00	€20.00
Essential living costs	Food	€35.00	€65.00
	Clothes (essential replacements)		
	and laundry	€6.00	€25.00
Socialising costs	Personal items (including toiletries)	€5.00	€15.00
	Socialising (including sport)	€25.00	€70.00
	Phone	€7.00	€20.00
	Travel (local)	€0.00	€10.00
	Unexpected costs (including health or dental care)	€10.00	€20.00
<b>Total</b>		<b>€174.00</b>	<b>€441.00</b>

*"BSIS staff's genuine interest in my personal progress as an applicant and as an incoming student made me feel welcome and confirmed my decision to attend. I now see that the effort and accessibility that I first experienced via email is real, live and ongoing."*

**Sarah Sommer**  
German  
MA International Relations

CONTINUED OVERLEAF





## Timeline

The timeline, right, gives you a brief rundown of what you need to do and when you need to do it from the application process to graduation. It also outlines how your programme is structured. Please note, we are happy to accept applications for our programmes at any time, but we would strongly recommend that you apply at least three months in advance of your start date.

For further details, please see [www.kent.ac.uk/brussels](http://www.kent.ac.uk/brussels)

**\*International student visa applications:** if you have been given an unconditional offer, or when you have met the conditions of your conditional offer, you should apply for your visa. To apply for your Belgian visa, go to the Belgian consulate that serves your jurisdiction. To apply for your UK visa, you will need a Confirmation of Acceptance Studies (CAS) number, which the University of Kent will email to you once you have accepted our offer and no more than three months before the start of your course. For details, see [www.kent.ac.uk/studentimmigration/applying-for-a-visa](http://www.kent.ac.uk/studentimmigration/applying-for-a-visa)

Timeline	Full year in Brussels
Between October and April	<p>Submit application; make sure you supply all the necessary supporting documents. We aim to respond to applications within ten working days.</p> <p>As soon as you have met the terms of any conditional offer, please inform us. International students, see below*.</p> <p>Explore funding opportunities, such as the BSIS Scholarship fund, to find out what support is available for your studies.</p>
May	<p>Most scholarships have deadlines around May, although some may be later.</p> <p>Join the incoming students' Facebook group, meet fellow students and start researching life in Brussels.</p>
Before June 30	Non-EU students should have applied for their visa by this time via the Belgian Embassy.
July/August	Begin accommodation search.
September	<p>Module selection for autumn term.</p> <p>Induction and registration; register for language classes.</p>
October	<p>Library inductions.</p> <p>Module selection for spring term.</p>
December	End-of-term module evaluations.
January	Spring term begins.
March	Dissertation proposal submitted.
April	End-of-term module evaluations.
May	Summer term; dissertation research and preparation begins.
September	Submit dissertation.
November	<p>Degree result announced.</p> <p>Graduation in Canterbury Cathedral.</p>

# CAREER OPPORTUNITIES

**At the University of Kent, we are committed to enhancing the employability of all our students, equipping you with the right skills to successfully enter the competitive world of work.**

The location of our Brussels centre in 'the capital of Europe', our multidisciplinary approach, our standard of academic excellence and the unparalleled internationalism of our student body provide you with a unique educational and life experience, opening up numerous career paths within the international arena.

## Graduate destinations

Kent has an excellent record for employment: 98% of our postgraduate students who graduated in 2016 found a job or further study opportunity within six months. Graduates of the Brussels School of International Studies enjoy a very high success rate in pursuing their chosen careers shortly after graduation. Some who undertake internships during their studies are offered contracts immediately after graduation and opt to remain in Brussels. Others have joined their home country's diplomatic service, entered international organisations, or have chosen to undertake a 'stage' at the European Commission or another EU institution.

Many of our students, however, venture further afield. Recent BSIS graduates, for example, have helped to set up elections in Afghanistan; others have monitored elections in Iraq, throughout the Balkans and in Africa. A large number of BSIS graduates have either joined or have themselves started NGOs and charities focused on these or other regions. Others have returned home well-equipped to pursue careers in international commerce, finance, government and law.

For all these reasons, the BSIS alumni base extends from the United Nations to BP, from the US Department of Homeland Security to the International Criminal Tribunal for the former Yugoslavia (ICTY) at The Hague, spanning a variety of activities and professions. Recent graduates have found careers in organisations such as Greenpeace, Oxfam, NATO, the UK Foreign Office and the European Parliament.

## Benefits of advanced study

Employers recognise that a postgraduate qualification demonstrates a wide range of skills. During your studies at BSIS, you acquire a high level of academic knowledge and specialist skills within your subject area. We also help you to develop general skills that are essential to the world of postgraduate employment, such as the ability to adapt to challenges, analyse complex real-world problems and develop original ideas.

By studying in Brussels' richly international environment, you are able to enhance your cultural awareness as well as acquire additional language skills, which are invaluable assets for many employers.

## Transferable skills training

Transferable skills are those which, once learned, can be used in different contexts. They include IT and information management skills, interpersonal skills, teamworking and leadership skills, and an understanding of business and commerce.

An increasing number of employers have identified the importance of these skills as a complement to academic knowledge. At BSIS, we help you to gain these skills through your academic studies and also through participation in University-wide initiatives, such as Kent Graduate School's Researcher Development Programme (see p28).

## Internships in Brussels

We have fostered excellent relations with the Brussels community, which creates many opportunities for students to pursue internships. Through agreements with prestigious employers, the University is able to offer around 20-30 high-quality internships per year that are dedicated exclusively to our Brussels students. In addition, BSIS students and alumni comprise a tightly knit network through which internship opportunities pass frequently.

Some of these internships are paid (non-EU students have the right in Belgium to apply for a work permit allowing them to work 20 hours a week) and others are voluntary. These internships offer great exposure, the chance to build a network and the opportunity to collect primary material for your dissertation.

## Careers advice

The School has a dedicated careers adviser who provides advice and coaching services to students through workshops, seminars and individual meetings. Working with our careers adviser during the academic year will maximise your potential to identify and obtain employment after graduation, in Brussels or elsewhere.

Many of the organisations and their human resources personnel here in Brussels are familiar with the University, which can be beneficial in the application process. There is also a large number of alumni still in Brussels, who often send notices of positions through the list-serve network to which all current BSIS students are subscribed.

## The BSIS Alumni Network

BSIS students and alumni have created a lively and thriving network that communicates on many levels to keep alumni in touch with each other, with the University, with current students and with developments in the many fields of international affairs studied at the School. This work includes co-ordinating reunions and receptions throughout the world (with a particularly active chapter in Washington, DC), maintaining a website and running an active email list of opportunities and ideas.

Building on this success, the Alumni Forum has been established, which meets four times a year to bring together alumni and students to discuss current affairs. Alumni have also agreed to be contacted by students to share their experiences in their respective fields and to help where possible with internships and employment.

## Further information

For more information on the careers help we provide at the University of Kent, visit our Employability web page at [www.kent.ac.uk/employability](http://www.kent.ac.uk/employability)

*"BSIS is a perfect place to start a career if you want the right combination of academic rigour and professional opportunity. My network at the School helped me get a 'stage' with the European Environmental Bureau and I now work in Washington, DC on global warming policy for an Amsterdam-based NGO – I wouldn't have secured this position were it not for my experience at BSIS."*

**Kyle Ash**  
American  
LLM International Law with International Relations, now  
Senior Legislative Representative, Greenpeace USA



# GRADUATE PROFILES

**Moritz Pieper graduated from Kent with a PhD in International Relations and now works as a Lecturer in International Relations at the University of Salford.**

## **What attracted you to Kent and to this particular programme?**

I already knew Kent from my Master's degree (International Relations Double Award between Canterbury and the Higher School of Economics in Moscow). My decision to go to Brussels for my PhD was primarily motivated by the presence of my supervisor there. In addition, being on the doorstep of many embassies, think tanks and research institutes was also critical for my PhD research in international relations.

## **How were your studies? What did you find particularly inspiring or interesting?**

For my Master's I studied International Relations in Euroatlantic and Eurasian Communities. For my PhD project at BSIS, I researched Chinese, Russian and Turkish foreign policies towards the Iranian nuclear programme. My dissertation has been published by Routledge (*Hegemony and Resistance around the Iranian Nuclear Programme: Analysing Chinese, Russian and Turkish Foreign Policies*, 2017).

I have benefited from the advice from lecturers who are often internationally recognised experts in their respective fields, and have enjoyed the experience of learning from diverse educational backgrounds in China, Russia, Turkey and Europe, as a result of my PhD-related travels.

## **Was the course flexible enough to allow you to pursue your own passions?**

I spent two months in China on fieldwork for my PhD and travelled back home by the land route via Mongolia and Russia. As a by-product of that journey, I published a travel writing book in 2016 (*Vom Gelben Meer bis zum Atlantik: Eine Reise mit der Transsibirischen Eisenbahn*). Kent enabled me to pursue my travel and writing passions, as a result of which I was able to explore different publishing media and reach out to different audiences. Such first-hand experiences are invaluable and can determine job and life choices, so I am very grateful for this opportunity. Without the financial support I received from Kent in the form of a doctoral scholarship, my PhD studies would not have been possible, and I am thankful for this privilege.



## **How do you think your course has changed you?**

I was fortunate to have been surrounded by many fantastic fellow students and colleagues who have enhanced my research experience in many ways.

Throughout my time at Kent, I have travelled around the globe – from Turkey, Russia and the United States, to China and all over Europe. This programme has changed me as a person because I did not travel alone: my PhD programme turned academic interactions into friendships for a lifetime, and I was continually encouraged and supported by my supervisors and mentors, some of whom have become friends during this process. I may not have become wiser, but I recognise that big projects (such as undertaking a PhD) are always more enjoyable with a network of many supportive friends – which I have found at Kent.

## **How did you enjoy your time at Kent in general?**

I enjoyed my time in Canterbury as a Master's student, touring the iconic English pubs in this quaint city, as much as I have enjoyed my time at BSIS with the beautiful cities of Leuven and Gent reachable within a 30-minute train ride. Brussels has lots to offer, too; from great bars, museums and exhibitions to perfect travel connections to Germany, France and the UK.

## **In what way has your degree helped you find work/further study?**

I have gone into academia and have started to work as a lecturer in international relations – something that would not have been possible without my doctoral studies at Kent, or indeed without the advice and support of my supervisors and mentors there.

I like the intersection between academic research and policy-relevant input. The benefits between the academy and decision-makers should be mutual: international relations research depends on input from the policy communities, and if we can feed back some of our findings into the latter, we are not only answerable to a handful of peers, but acquire a wider societal relevance beyond that 'ivory tower'. Political scientists these days have to transcend disciplinary divides and act as 'public intellectuals' to shape an informed public debate on the issues that matter. This does not make us less 'academic', but requires us to be able to speak to different audiences.

## **What would you recommend about studying at Kent?**

Kent is a strong research university, is internationally well connected and is perfectly located, with European centres in Brussels, Paris, Rome and Athens. It is a great place to study International Relations in the heart of Europe.

**Elena Seiffert graduated from Kent with an MA in International Migration Studies and now works at the UN Refugee Agency.**

**What attracted you to studying at Kent?**

I chose to study at Kent because it offered an interdisciplinary programme specific to my area of interest, International Migration Studies. It allowed me to approach my area of study through a variety of different perspectives.

**What did you particularly enjoy?**

I enjoyed the opportunity to spend so much time learning about a subject which interested me so much. I found my Forced Migration Studies course to be particularly inspiring thanks to the professor, who had extensive experience in this domain. Through this course we also had the opportunity to travel to Geneva to meet with representatives of various organisations working in migrant issues.

I also very much enjoyed living in Brussels where there were numerous opportunities to engage with organisations working with migrants within the city.

**What about the teaching?**

We had some excellent and engaging professors at Kent. I was particularly inspired by my professor for Theories of Conflict and Violence who had extensive field experience and great passion for her work which came out in her teaching.

**How would you describe your fellow students?**

There was a good group of fellow students. In particular, I enjoyed getting to know students with similar interests to my own and a variety of different experiences and backgrounds through the Migration Forum.

**What did you gain from the course?**

It helped me to develop my critical and analytical thinking. I find that I often think back to what I learned in several of my courses at Kent in different situations – both professionally and in my daily life.

**What careers advice did you receive at Kent?**

We had career advice forums/workshops, which were helpful. I kept my notes from these afterwards and refer to them when writing cover letters, updating my resume, or preparing for new job interviews.

**In what way has your degree helped you find work?**

The degree has helped me to view my work in migration with an analytical lens, and to think more in-depth about issues. I am currently working for the Resettlement Unit at the UN Refugee Agency, and plan to continue in this field.

**What would you recommend about studying at BSIS?**

I would recommend Kent (BSIS) for its location, as Brussels is a diverse and interesting city, with many volunteer and internship opportunities. I would also have to say the academic staff; they were very passionate about their area of study and had extensive experience in their field.

**Dario Sabbioni graduated from Kent with an MA in Political Strategy and Communication and is now a Diplomat with the Italian Ministry of Foreign Affairs and International Cooperation in Rome.**

**What attracted you to this particular programme?**

I chose this Master's programme as I wanted to get a degree which could get me the skills to enter the job market in the capital of Europe. Studying in Brussels, with the countless events in the institutions and the many training opportunities offered by the School, definitely made it the best choice.

**How were your studies?**

It was very easy to find my way through my studies, because I was helped by the academic staff to develop my own path and research interests. I focused on the issue of EU public communication: how to engage people in the EU public sphere, how to make them aware of the European project, how to better communicate the results and achievements of European integration. In the end, choosing my area of study was much easier than expected.

**What about the teaching?**

Teaching at Kent was completely different from everything I had experienced before in the Italian educational system. Interactive classes, constant

dialogue with teachers and fellow students, great opportunities for networking and, most importantly, the feeling of being an active part of the learning process.

**Was the course flexible enough to allow you to pursue your own passions?**

I had the time to enjoy the vibrant cultural life of the city, to create my own network of practitioners in the institutions, which then helped me to find a traineeship in Brussels. Being able to balance the studies and the social life was one of the key elements that in the end allowed me to be fully satisfied with my time at BSIS.

**What careers advice did you receive at Kent?**

We had very interesting career workshops with Elizabeth van den Bergh, who is an expert trainer on career coaching. Since the job market in Brussels is pretty narrow, and mostly focused on public affairs and more 'institutional' jobs, it is very easy to create your own career path. Talking with the right people, with extensive experience in EU affairs, was the best advice for my career.

**What did you gain from the course?**

I gained a hands-on experience of EU politics, which is exactly what I was aiming for. The realm of EU politics is a complex environment and the only way to be successful is to understand it profoundly. Before my BSIS experience, I was 'lost' in front of the many acronyms, public figures and

institutional mechanisms. At the end of the course, I was able to grasp the complex interrelations between the many different players.

**How did you enjoy your time at Kent in general?**

I had a great deal of fun with colleagues and other expats working/studying in Brussels. We created a small community of people living together in the surroundings of the BSIS, which made it possible for us to study together and to share also our free time.

**What advice can you offer potential students of BSIS?**

In today's world we need to adapt to the different aspects of social and political life. My awareness and experience of this was definitely heightened by my course at Kent. Studying at BSIS, you will get the best teaching experience the right opportunities to develop the best career possible.





**Sarah Somer graduated from Kent with an MA in International Relations. She is now a Senior Programme Manager for the European Programme for Integration and Migration.**

### **What attracted you to Kent and to this particular programme?**

I decided to study for the International Relations MA at BSIS for multiple reasons. Firstly, the structure of the course allowed for a lot of flexibility and the possibility to include modules from other international programmes such as International Migration; this was key to my decision. I knew I wanted to approach my studies from a specific angle, based on my interests, and found this openness at BSIS.

The location in Brussels provided a unique opportunity for me to explore work in the 'capital of Europe', as my main focus was EU politics. I have always been most interested in applying what I learn in theory and knew that studying alone would not give me the complete picture I looked for.

Finally, I had a great interest in studying at a British university again because of the open, independent study approach that they provide.

### **How were your studies?**

I enjoyed my studies a lot and often found it tough to choose from the variety of modules offered. Most of the modules I picked were actually not part of the International Relations programme. I particularly enjoyed the law courses, migration and negotiation, and mediation which all inspired me for when writing my thesis.

### **What did you think of the teaching at Kent?**

All teachers were very approachable and well organised. The invited guest speakers brought a fresh perspective and more job-specific viewpoint into the debates. It was also great to have exchanges with teachers from Canterbury as well, which encouraged exchanges with the programme based there.

### **Was the course flexible enough to allow you to pursue your own passions?**

The IR programme is particularly flexible in its format. I would have appreciated a bit more flexibility for those of us who worked alongside our studies. It was very challenging for me to juggle the two at times and I would have liked more freedom regarding lecture times and assignment deadlines.

### **How would you describe your fellow students?**

BSIS is like a family and this feeling was there from the very beginning. My fellow students came from all over the world, with very different backgrounds but all with similar interests. Coming together in Brussels with the same motivations created a



strong bond that continued beyond the time of our studies. The learning atmosphere was always open and accepting, both in and out of the classroom.

### **How do you think your course has changed you? What did you gain from it?**

I believe that my studies at Kent have made me more open to a more diverse set of opinions and encouraged me to pursue my own interests instead of following strict curricula. I have developed much more confidence in myself and my thoughts.

### **What about the social life?**

The social life connected to studying at BSIS significantly contributed to the positive experience. Fellow students, but also teachers, formed a family-like environment that was supportive as much as entertaining. The sports and social events organised by the University could have been more diverse but then BSIS is a small entity in Brussels.

### **What careers advice did you receive at Kent?**

The careers advice provided during our studies was eye-opening to me as I had never received similar training before. As a consequence, I became much more confident in applying for positions but also, I really benefited from tips regarding network building and in recognising good job profiles. It was very helpful to have this support from the very start of our studies so as to be encouraged to prepare early for the highly competitive job market in Brussels. This experience has also helped me in hiring staff for my organisation.

### **In what way has your degree helped you find work?**

The Brussels location certainly helped me get into the Brussels job market but the modules themselves, particularly those on migration and international law, were extremely useful. Having developed a diverse profile thanks to the flexibility of my programme, together with the opportunity for specialisation, gave me just what I needed for my first job application – which was successful! I am still working for the same organisation four years later. In the future, I see myself using the knowledge I gained in this job for policy making either at EU or member state level.

### **What would you recommend about studying at BSIS?**

I do believe that the Brussels School of International Studies at Kent provides a unique study experience all around; from the teaching, to the fellow students, to the location. An opportunity to go beyond an academic qualification and to be prepared for work in your fields of study is invaluable.

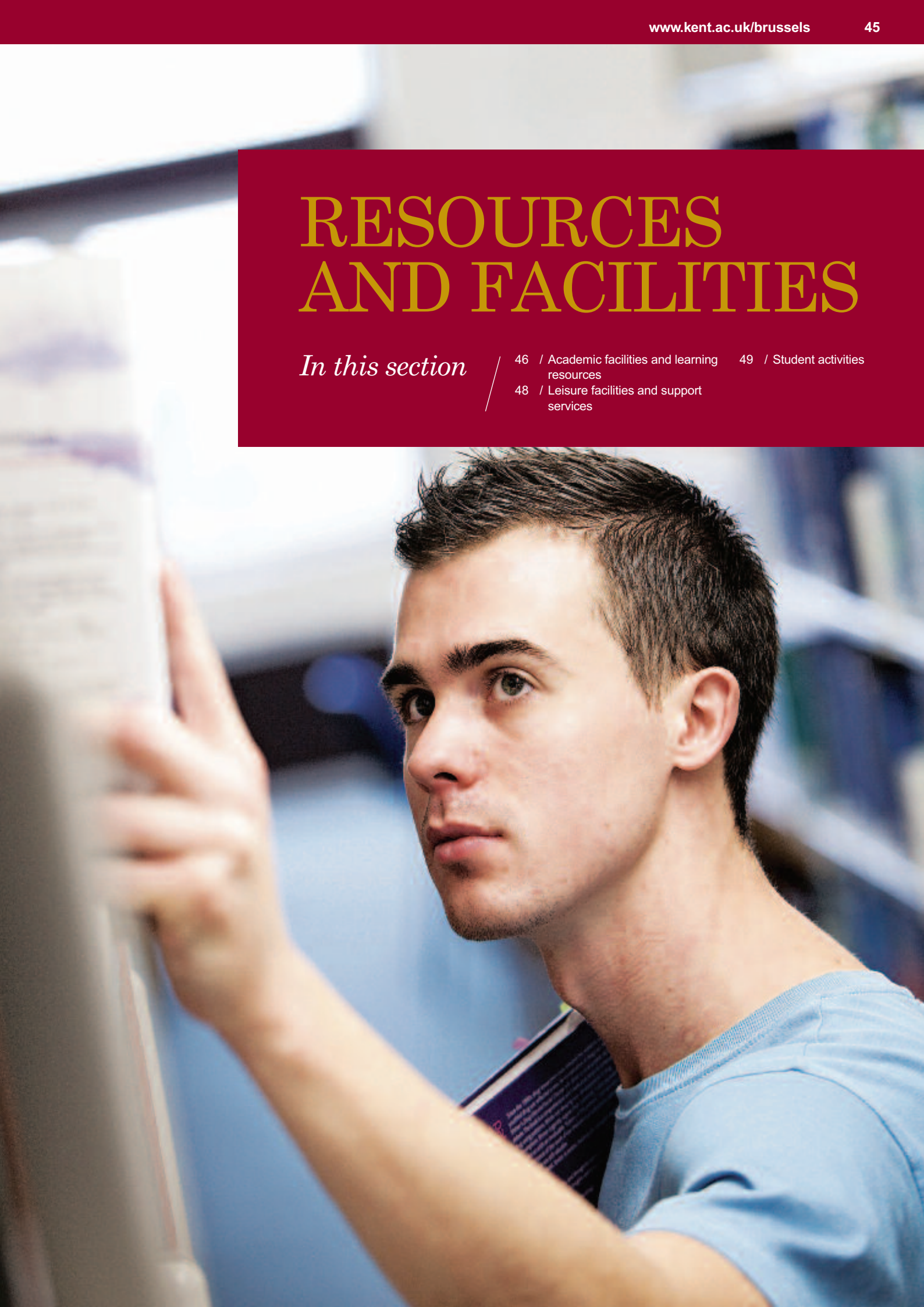
# RESOURCES AND FACILITIES

*In this section*

46 / Academic facilities and learning resources

49 / Student activities

48 / Leisure facilities and support services





# ACADEMIC FACILITIES AND LEARNING RESOURCES



**For anyone pursuing an advanced degree in one of the many fields of international affairs or international law, the opportunities for academic development and achievement in Brussels are unparalleled.**

By studying here – the headquarters of the European Union and NATO, as well as hundreds of NGOs – you have access to numerous archives, scholars, experts, practitioners and conferences that thrive among the institutions of this city. As a student at our Brussels centre, you have access to at least ten nearby general and specialist university, government and private libraries suitable for postgraduate study. All of these libraries have substantial holdings in English, and an up-to-date research guide on making use of them is provided when you register for your degree. This guide also details the extensive online services to which you have access via Kent and our partner universities, the Vrije Universiteit Brussel (VUB) and the Université Libre de Bruxelles (ULB).

## University library facilities

Our Brussels students have access to facilities on the main VUB/ULB campuses. Although these Brussels universities share a large campus area, they are distinct institutions, so there are two libraries, two computing centres and two of most other student services.

The ULB Library catalogue, CIBLE, can be consulted online at [www.bib.ulb.ac.be](http://www.bib.ulb.ac.be). The ULB Library consists of four main libraries and a number of specialised libraries around the campus. The libraries of most interest are the

law library, the library for human sciences and the library at the Institute for European Studies. Approximately two million books and journals are housed in these libraries.

The VUB Library catalogue is available online at [www.vub.ac.be/BIBLIO/index\\_en.html](http://www.vub.ac.be/BIBLIO/index_en.html). The Library contains some 400,000 volumes. Most of these can be found at the central library; the remainder is decentralised in various departments and faculties around the university.

## Other libraries and research resources

There are many libraries relevant to international relations only a short metro ride from our Brussels centre. Among these are: the Central Library of the European Commission, the Library of the Embassy of the United States of America and the Library of the Catholic University of Brussels. You can also make use of the Royal Library and the Library of the Ministry of Foreign Affairs of Belgium, both easily accessible in central Brussels.

You are encouraged to join local think tanks such as the Royal Institute for International Relations of Belgium, Friends of Europe, the Centre for European Policy Studies (CEPS) and Bruegel, and regularly attend their meetings to complement your research.

You can also take advantage of specialised libraries in Canterbury and London (easily reached by train) for research work, or for the preparation of your dissertation. As a student at BSIS, you are registered as a student of the University of Kent, which gives you access to the facilities at the campus in Canterbury, where the Templeman Library has strong holdings in the area of politics and international relations and mediation.

There are many regional and specialist libraries in London and other centres which all members of the School of Politics and International Relations can use, subject to conditions, such as the Chatham House library at the Royal Institute of International Affairs in London. The School has produced a library guide that provides both a full introduction to international relations resources at the University's main library and a substantial list of library resources in London for students of international relations.

*“I’ve found the electronic and physical scholarly resources available in Brussels to be world class.”*

**Milo Jones**  
American  
PhD International Relations

There is also a modest number of books held on our Brussels premises to augment the books that can be found in the local libraries, the catalogue of which is available online.

### Electronic information services

The University of Kent's Templeman Library holds an extensive and rapidly increasing range of electronic sources available to students, including online databases (Web of Science, Social Science Citation Index, International Bibliography for the Social Sciences, UnCover) and full-text journal services (Academic Press, Wiley-Blackwell, Cambridge University Press, Taylor & Francis, Kluwer Academic Publishers and Oxford University Press), all of which can be accessed remotely from Brussels.

You also have access to the Electronic Law Library, which is an award-winning portal constructed by the law librarian at the University of Kent. It offers:

- full-text access to articles of some 1,000 law journals
- Justis, which contains law reports, including reports on human rights
- Butterworths, which includes Halsbury's Law Direct, Legislation Direct, All England Direct and Law Direct

- LexisNexis, which contains UK case law and legislation, and a full-text journal retrieval system
- Westlaw, which contains UK case law and legislation
- Lawtel, which includes Human Rights Interactive, full-text legislation, case law and transcripts
- Current Legal Information for current law databases and a journals index
- Index to Legal Periodicals
- Zetoc, which provides online search of contents pages of some 20,000 journals held in the British Library
- Clover Newspaper Index, with an index to articles published in newspapers since 1987.

### Further information

For more information on the facilities at BSIS, see [www.kent.ac.uk/brussels](http://www.kent.ac.uk/brussels)

For more information on the VUB and ULB, including their extensive learning resources, go to [www.vub.ac.be](http://www.vub.ac.be) or [www.ulb.ac.be](http://www.ulb.ac.be)

*"The resources available both at the School and at the nearby partner universities proved excellent tools for my studies and for enhancing my skills in academic research."*

**Daniel Trup**  
British

LLM International Law with International Relations, now works for the Specialist Prosecutor's Office of Kosovo





# LEISURE FACILITIES AND SUPPORT SERVICES

**As a student of the Brussels School of International Studies (BSIS), you benefit from access to a range of cultural activities, leisure and sports facilities, and personal support services during your time in Brussels.**

## Arts and culture

Brussels is a vibrant city which attracts a diverse and young population. The art scene is developing rapidly and there is a wealth of cultural events to keep you occupied throughout the year. There is always something going on in the city and the surreal nature of the Belgian psyche is evident in the murals, festivals and activities.

## Sports facilities

The sports facilities on the VUB campus include: a 25-metre swimming pool; a football pitch, rugby pitch and athletics track; sports halls for indoor soccer, basketball, badminton and tennis; a martial arts hall, squash courts and a climbing wall.

There is also a fitness centre on the VUB campus, which is run by the company Basic Fit. Its facilities include a modern gym and cardio area, relaxation areas, a solarium and a dance studio.

## Advice and support

University is a place of study, but it should also be a place where you feel at home. BSIS staff provide ongoing advice and support during your studies as well as useful information on accommodation, student visas, enrolment, orientation and practical tips on preparing for your arrival in Brussels. All new students are encouraged to attend a Welcome Week before their studies begin. See pp38-39 for more information.

Students in Brussels also have access to a wide range of additional support services available at the VUB and ULB.

## Student counselling

The Student Wellbeing Team in Canterbury offer a wide range of support services across all University sites. You can contact them by email [wellbeing@kent.ac.uk](mailto:wellbeing@kent.ac.uk) or via the internal Kent phone system from BSIS. The team are able to provide advice and contacts locally in Brussels for any issues that cannot be solved remotely.

## Health centre

Both the VUB and ULB have a medical service on campus, providing preventive, emergency and general health care.

For more information about the VUB Medical Office, please see [www.vub.ac.be/english/infofor/prospectivestudents/healthcentre.html](http://www.vub.ac.be/english/infofor/prospectivestudents/healthcentre.html)

The ULB Medical Service can be contacted by telephone on 02 650 29 29.

## Legal advice

The Brussels Commissioner Office ([www.commissioner.brussels](http://www.commissioner.brussels)) can advise on a range of legal questions, from rental contracts to family allowances and taxation. This service is free of charge for all international residents in Brussels.

## Disability support

Disability support is provided by the University of Kent's Student Support and Wellbeing teams, based on the Canterbury campus, in co-ordination with the VUB's services. For more information, contact [accessibility@kent.ac.uk](mailto:accessibility@kent.ac.uk)

*"The staff in Brussels are always available if you have any concerns or problems. That's a very big plus for the School."*

**Claudia Nocente**  
Italian  
MA International Conflict and Security



# STUDENT ACTIVITIES



*"When deciding where to undertake my Master's degree, I asked myself where I could maximise my time, dedication and efforts. The answer was easy – Brussels! I chose BSIS because it provides students with the opportunity to study international law with international relations not only in the 'capital of Europe' but in an institution that enables you to learn far beyond the textbook."*

**Sue Basu**

Canadian

LLM International Law with International Relations

**In addition to your academic work, there are many opportunities for you to get involved in student activities outside the classroom.**

On the following pages, there are details of some of the many initiatives that have been founded by past students of the Brussels School of International Studies and that still thrive today.

## Brussels Journal of International Studies

The *Brussels Journal of International Studies* is run by the students and the faculty, and was founded in 2003. Its mandate is to establish a platform for discussion in the field of international studies for students, alumni and associates of BSIS.

Published articles are in-depth, high-quality contributions to the disciplines of all programmes offered at BSIS. Submissions are open to all current and graduate students of BSIS, as well as scholars related to the School.

The diversity of the BSIS scholars and their topics is reflected in the journal. Edited by current students who are selected each year by the Board of Editors, the journal is published annually in an electronic version and is available at [www.kent.ac.uk/brussels/journal.html](http://www.kent.ac.uk/brussels/journal.html)

## Guest lectures

BSIS invites practitioners from the Brussels community to give guest lectures several times a month. These lectures are an important part of the programme for several reasons. Events of international significance occur throughout the academic year that could not possibly have been anticipated in advance and so are not included in the teaching curriculum. Guest lectures offer a forum in which these events can be discussed. A range of different politicians, diplomats, journalists and others are able to discuss in depth a wide range of specialist issues, often illuminating issues with much greater clarity than the media. The insights of such practitioners often help staff to identify for students those features of international relations which are embedded within current events, forging an excellent link between theory and practice.

A guest lecture committee works in conjunction with BSIS administration to select speakers for presentations. These lectures are an excellent way of hearing the perspectives of those working in the field on current issues. BSIS is proud and grateful to have hosted, among many others:

- Howard Chase (former Director of European Government Affairs, BP)
- Martti Koskenniemi (international lawyer and Finnish diplomat)
- Ambassador Vladimir Chizhov (Permanent Representative of the Russian Federation to the European Union)

- Senator Alain Destexhe (Vice President of the Committee on Foreign Affairs)
- Gareth Evans (President Emeritus of the International Crisis Group)
- Professor Igor Ivanov (former Russian Foreign Minister)
- General Sir Mike Jackson (former Head of the British Army)
- Judith Kumin (Representative of the UNHCR in Brussels)
- Edward Mortimer (formerly of the Executive Office of UN Secretary-General)
- Mehmet Oğütçü (former Director of International Communications, BG Holding Group)
- Ambassador Vladimir Rakhmanin (Deputy Secretary General, Energy Charter Secretariat)
- Dmitry Rogozin (Deputy Prime Minister of Russia)
- Dr Jamie Shea (Deputy Assistant Secretary General, Emerging Security Challenges Division, NATO)
- Ambassador Oda Helen Sletnes (Permanent Representative of Norway to the European Union)
- Steffan Weber (Secretary General, EU-Arctic Forum)
- Aidan White (former Secretary General of the International Federation of Journalists)
- Sir David Warren (former UK Ambassador to Japan)
- Ambassador Kostiantyn Yeliseiev (Permanent Representative of Ukraine to the European Union).

**CONTINUED OVERLEAF**



### International Dinner

At BSIS, an annual formal High Table Dinner is held to mark the end of the teaching year, to which a guest is invited. The guest is normally a diplomat, politician or senior member of an international organisation. A committee of students chooses the venue and plans the event, often organising the evening around a particular international theme. The Dinner is always well attended by students, staff, alumni and their guests, and is one of the most anticipated events of the year.

### Environmental Forum

The Environmental Forum (EF) was established in 2006 by a group of students interested in doing their part to educate and advocate for environmental rights. EF's mission is to help create awareness within the BSIS community about environmental concerns and publicise ongoing events, within Brussels and beyond, which relate to the environment. EF produces an e-newsletter *EnviroMENTAL*, which includes a campus focus, tips on a more environmentally sustainable lifestyle, recent relevant articles and upcoming events. Events have included screenings of the documentary film *An Inconvenient Truth* and a fair trade coffee and tea day.

Meetings are an open forum for discussion about environmental issues and a chance to brainstorm new initiatives. EF looks forward to continuing to challenge peers and faculty to make environmentally friendly choices, and to creating partnerships within the VUB and ULB to support in-house initiatives.

*“For me, studying at BSIS was very rewarding and has prepared me well for the challenges that I currently face in my career. I am now working as a foreign service officer for Citizenship and Immigration Canada and am awaiting notification of my first international posting.”*

**Hugo Genest**  
Canadian  
MA International Conflict and Security

### International Justice forum

International Justice (IJ) is a research-oriented working group that focuses on the concept of justice and the application of justice within the international arena. It was formed to study both the theoretical concept of justice and how the concept of justice is utilised within the international system by both state and non-state players.

Members of the international justice group examine theory, delving into case studies such as German genocides and the Nuremberg Trials, Rwanda and Burundi history and the interrelated genocides, atrocities and truth commissions in Cambodia, the Japanese American migration history and the Second World War internments, as well as concepts such as environmental justice, child soldiers, and the North–South divide. Planned events include viewings of documentaries, such as *Ghosts of Rwanda*, *S21: The Khmer Rouge Killing Machine* and *Auschwitz – Inside the Nazi State*. There are also organised field trips – for example, IJ has visited Auschwitz and The Hague in recent years.

### Migration Studies Forum

The mission of the Migration Studies Forum is to take the topic of international migration outside the classroom. Members have attended events held at the European Commission, the UN, the Centre for European Policy Studies and the Cervantes Cultural Centre. The Migration Studies Forum has also organised a visit to the offices of the International Organization for Migration in order to discuss several key programmes with staff there. The Forum is open to any student interested in international migration.

### Strategic Affairs Forum

The Strategic Affairs Forum is a discussion group for a broad range of issues, such as geopolitics, terrorism, military matters and global economic issues, among others. Our goal is to have lively discussion on relevant issues that have a long-term impact on global events.

The Forum is not restrictive and all students interested in the discussion topics are welcome to participate. At the end of each meeting, there is a small social event, so that discussion can continue and other topics can be addressed.



### BSIS Graduate Student Union (BGSU)

The BSIS Graduate Student Union (BGSU) is a self-governing body of student members whose aim is to promote the interests and welfare of students at BSIS and to represent the interests and concerns of its members to the academic and administrative staff. Through the BGSU, you have access to a wide range of benefits, including guest lectures, discounts, social and athletic events, networking events and more.

Representatives are elected at the start of each term, with positions rotating so that some new representatives are elected in September and some in January. The elected body of the BGSU consists of a President, Vice-President, Secretary, Treasurer, Social Secretary, Sports Representative, Welfare Officer and one representative from each BSIS programme.



# FEES AND FUNDING

*In this section*

52 / Tuition fees and financial support



# TUITION FEES AND FINANCIAL SUPPORT



**The annual tuition fees for 2018/19 are listed below. Brussels School of International Studies programmes are charged in euros rather than sterling and there is only one fee regardless of student origin.**

Fees are correct for 2018/19 and represent the cost of one year of study only; fees for 2019/20 will increase year on year by no more than RPI +3% in each academic year of study except where regulated. Where fees are regulated (such as by the Department of Education or Research Councils UK), they will be increased by an amount up to the permitted increase. For the most up-to-date information on tuition fees, see [www.kent.ac.uk/brussels/studying/fees](http://www.kent.ac.uk/brussels/studying/fees)

## Payment of tuition fees

BSIS students have several options for payment. Tuition fees paid in full at registration attract a 2% discount. BSIS also makes available two structured tuition fee payment plans, which are interest-free and allow students to spread their fee payments over the duration of their studies. Students sign up for a selected payment plan and hand this plan to the BSIS Finance Officer during Orientation Week.

## University of Kent, Brussels scholarships

Each year, BSIS awards over €110,000 worth of scholarships to its postgraduate taught (MA/LLM) and research (PhD) students. In each case, the Scholarship Board is looking for the very best and brightest students, but also those who show the greatest potential. For further information, see [www.kent.ac.uk/brussels/studying/fees/scholarships.html](http://www.kent.ac.uk/brussels/studying/fees/scholarships.html)

### Brussels School of International Studies tuition fees

Course	Award	Fee (€)
<b>Taught programmes</b>		
Full-time 90 ECTS	MA/LLM	17,960
Full-time 120 ECTS	MA/LLM	25,560
<b>Research programmes</b>		
Full-time	PhD	9,420
Part-time	PhD	4,710

Please note that the Two Capitals and the part-time programmes (two years) are subject to a different fee structure. For further information, please contact Admissions on [ukbapplications@kent.ac.uk](mailto:ukbapplications@kent.ac.uk)

## Financial support

General schemes administered by the University of Kent are outlined below. Please note that students are eligible to apply for US Federal and Canadian Government Student Loans, Fulbright and Jean Monnet Scholarships, and a variety of EU state education funding initiatives. BSIS is also a participating member of the Erasmus Exchange Scheme and Erasmus+ loan scheme. In addition, students legally registered in Belgium are eligible for a work permit allowing them to work for up to 20 hours a week.

## UK and EU students

### Professional and Career Development Loans

Professional and Career Development Loans are commercial bank loans that students can use to help pay for work-related learning. To be eligible, you must be an applicant to an approved programme of study and have been resident in the UK for at least three years. For further information, see [www.gov.uk/career-development-loans](http://www.gov.uk/career-development-loans)

## US and Canadian students

### US Federal and private loans

US students are eligible for Federal or private loans when attending the University of Kent. Candidates should contact our Foreign Loans Unit at [foreignloans@kent.ac.uk](mailto:foreignloans@kent.ac.uk) before applying.

## Fulbright Commission awards

The Fulbright Commission has awards available for US citizens who wish to undertake postgraduate study at the University of Kent. For further information, see [www.kent.ac.uk/scholarships/postgraduate/international/fulbright\\_commission.html](http://www.kent.ac.uk/scholarships/postgraduate/international/fulbright_commission.html)

## Canada Student Loans

Students from Canada may be interested to note that we accept Canada Student Loans. For further information, please contact our Foreign Loans Unit at [foreignloans@kent.ac.uk](mailto:foreignloans@kent.ac.uk)

## Students from developing countries

### Overseas Bursary Committee

The Overseas Bursary Committee is normally able to offer one or more awards each year to overseas students who are unable to complete their education in their own countries because of religious, political, social or cultural persecution. For further information, see [www.kent.ac.uk/brussels/studying/fees/dev-countries.html](http://www.kent.ac.uk/brussels/studying/fees/dev-countries.html)

## Additional sources of funding

### Jean Monnet Scholarship Scheme

We have been welcoming students from Turkey on the Jean Monnet Scholarship Scheme for many years. The scholarship covers tuition fees and living costs, and is awarded competitively.

There are also funding opportunities for students from Scandinavia, Germany and Italy; these can be found at [www.kent.ac.uk/brussels/studying/fees/finance-aid.html](http://www.kent.ac.uk/brussels/studying/fees/finance-aid.html)

## European Commission

The European Commission has launched a pilot project in which it offers scholarships for students from Russia and the European Neighbourhood countries intending to enrol for an MA programme on the European Union. For further information, see [www.kent.ac.uk/brussels/studying/fees/additional.html](http://www.kent.ac.uk/brussels/studying/fees/additional.html)

## Further information

For more up-to-date and detailed information on the financial awards listed here, see [www.kent.ac.uk/scholarships/postgraduate](http://www.kent.ac.uk/scholarships/postgraduate)



*"It was a privilege to be awarded one of the BSIS scholarships, which enabled me to undertake my Master's degree and subsequently experience all the fantastic opportunities the city of Brussels provides for politics students."*

**Dario Sabbioni**

Italian

MA Political Strategy and Communication





# HOW TO APPLY

*In this section*

55 / Entry requirements and applications  
57 / Come and visit us



# ENTRY REQUIREMENTS AND APPLICATIONS

**Below, you will find information on entry requirements and application procedures for all our postgraduate degree programmes in Brussels.**

## Applying to the Brussels School of International Studies

You may apply for any of our taught or research degree programmes at [www.kent.ac.uk/brussels/studying/admissions](http://www.kent.ac.uk/brussels/studying/admissions)

If you wish to pursue a secondary specialisation alongside your chosen taught degree, you should initially apply for a single programme of study in the area that interests you most. You will then have the opportunity to choose a secondary area of study through the modules you select once you have enrolled at BSIS.

If you are interested in taking part in the Two Capitals experience, you should initially apply for one of the following programmes: MA International Relations, MA International Conflict and Security, MA EU External Relations, MA International Development or MA International Political Economy. You are expected to have completed the taught modules of your chosen programme and have achieved an average of a Merit before applying for one of the exchanges as part of the Two Capitals programme. A decision on whether you may transfer to the Two Capitals programme will be made in May for those students who started their Master's in the previous September.

There is no requirement to inform us of your interest in pursuing either the secondary specialisation option or the Two Capitals programme prior to joining the School.

## Entry requirements

All applicants for the MA and LLM programmes at BSIS must possess a Bachelor's degree or equivalent. Applicants to the PhD programmes must have at least a Master's-level degree. The Bachelor's degree should normally be at least equivalent to an upper second class honours degree from the British system (or at least a 3.0 GPA under the American system). We accept a wide range of qualifications and you can find the general entry requirements for some countries on the University's main website [www.kent.ac.uk/internationalstudent/countries](http://www.kent.ac.uk/internationalstudent/countries). If your country is not listed or you need further clarification, please contact the School directly at [ukbapplications@kent.ac.uk](mailto:ukbapplications@kent.ac.uk)

Suitable first degrees include: Anthropology, Economics, History, International Relations, Law, Political Science, Psychology and Sociology. We encourage diversity and the many insights into the disciplines that those with other academic backgrounds can bring. We also recognise that

those with different specialisations often become involved in international affairs through the course of their careers and wish to gain insight and experience through academic study.

## English language requirements

The University of Kent requires all non-native speakers of English to reach a minimum standard of proficiency in written and spoken English before beginning a postgraduate degree.

The minimum English language test scores are listed below:

- a British Council International English Language Test (IELTS) with a score of 6.5 overall, including 6.0 in reading and writing and 5.5 in listening and speaking
- a Pearson Test of English (Academic) with a score of 62 overall (including 60 in all four subtests).

Please note that the minimum English language test scores for LLM programmes offered by Kent Law School in Brussels are slightly higher.

Only English language tests taken up to a maximum of two years prior to the date of registration will be accepted for admission to the University. Exceptions are sometimes made for students who have completed their undergraduate education entirely in English.

## Application materials

There is no application fee. A complete application will consist of the following:

### The application form

You can apply for any of the programmes by completing the online application form at [www.kent.ac.uk/brussels/studying/admissions](http://www.kent.ac.uk/brussels/studying/admissions). When applying, please be sure to select Brussels, as the application is used for all programmes and campuses of the University of Kent.

### An official university transcript

You do not need to wait until your final transcript is issued before applying to the University. The University recognises that making appropriate arrangements to study in a different country takes time and preparation, and we hope to provide you with an indication of your chances of acceptance as early as possible. You are therefore encouraged to send an unofficial copy of the transcript, showing the courses and grades awarded to date. This will give admissions staff an early indication of your abilities and, on this basis, we may decide to make a conditional offer to you; such an offer is

conditional upon receipt of the official transcript with an acceptable result (see under Entry requirements, left).

## Two letters of reference

For online applications, email addresses of referees must be provided as referees will be asked to submit references via our secure website. References must be originals and must be in English. Photocopies and translations will be accepted only if they have been certified as true copies by the issuing authority or by a certified translator. Referees listed on applications made online will receive an automated email requesting a reference. Email addresses must be official.

Letters of reference should be from those who have known you in an academic capacity and are familiar with your academic abilities. Ideally, a reference letter will discuss: how well and in what capacity the referee knows you; a statement on your academic performance and how this reflects your potential; your ability to work with others, particularly in a multicultural environment; and your potential to make a contribution to international affairs.

The University recognises that many applicants are mid-career professionals for whom it may be some years since they studied at a university and that such applicants may experience difficulties in obtaining academic references. In such cases, letters of reference from employers may be accepted, provided the referees are supervisors or others in positions more senior than you.

## Evidence of English language ability

Where English is not your normal working or mother tongue, evidence of competence in written and spoken English must be included (see under Entry requirements, left, for acceptable evidence).

## Research proposal

If you are applying for a PhD programme, it is strongly recommended that you contact BSIS in the first instance so that you have an opportunity to discuss your study plans with a member of academic staff.

You should then submit a brief research proposal of approximately 3,000 words, outlining the research project you wish to undertake. The topic of the proposal is assessed for its content and its merit, but also within the context of the supervisory skills available within the University. While there is a wide range of expertise available, it is sometimes the case that an applicant's proposal falls outside the range of specific subject knowledge in the University, or that the member of staff with expertise in the applicant's chosen research field has already taken on the maximum number of PhD candidates he or she may supervise.

**CONTINUED OVERLEAF**



### Personal statement

You are encouraged to send a letter of introduction with the application to provide information about yourself that you feel is relevant to your application and that the Admissions Board should take into consideration. Letters of introduction normally include: relevant academic or professional experience, your career goals and personal objectives, reasons for wishing to undertake the programme of study and reasons why you wish to study at BSIS. You may also submit a curriculum vitae with the application if you wish. Both the personal statement and curriculum vitae should be uploaded during the application submission.

### Application procedures

We work on a rolling admissions basis, and applications must be submitted by 31 July at the latest (for a September start) and 30 November (for a January start). You are strongly encouraged to apply as soon as possible, especially if you will require a visa to study in Belgium, or hope to apply for scholarships/funding. You are welcome to upload your supporting materials onto the secure online application form. If your application is successful, you should then bring original copies of these documents with you when you enrol at the start of term.

The formal offer will be made by the Admissions Officer in Brussels and your offer pack will be posted to you.

Admissions attempts to keep you informed of the status of your application throughout the admissions process. It is strongly recommended that as soon as you have received your offer, you contact your local Belgian consulate or embassy about obtaining a student visa as this process can be lengthy.

Once you have been offered a place at the University, your email address is placed on a mailing list enabling you to get in touch with other students, as well as receive advice from the Admissions staff on accommodation, living in Brussels and the Belgian visa process. You are also able to enrol online, set up a University of Kent email account and access course reading material online.

For more information on the process of preparing for the move to Brussels and the start of your studies once you have been accepted, please see our Incoming Student Support Services section on p38.

### Contacting Admissions

For any application or admissions queries, or for further information about BSIS and our programmes, please contact our Admissions Officer at:

E: [ukbapplications@kent.ac.uk](mailto:ukbapplications@kent.ac.uk)  
Skype address: [bsisbrussels](https://www.skype.com/en/contacts/bsisbrussels)  
T: +32 2 641 1721

Please note that the above telephone number will be answered from 10:00 to 17:00 Brussels time.



*“One of the best things about BSIS is the easy access to staff – their friendliness and accessibility are major pluses to studying here.”*

**Chris Heim**  
American  
MA International Relations

# COME AND VISIT US

**If you are able to travel to Brussels, we encourage you to visit our school. Our staff members are happy to meet with you, give you a tour of the facilities, answer any queries you may have and, when possible, arrange a meeting with a member of academic staff.**

If you wish to visit the Brussels School of International Studies (BSIS), please contact our admissions staff (see Contacting Admissions on the opposite page for details) to arrange an appointment.

Our facilities are located on the second floor of Boulevard Louis Schmidt 2a, just across the road from the campus of the Vrije Universiteit Brussel and opposite the Arsenal tram stop. When visiting us, please ring the bell marked 'Kent' to the right of the door near the elevators. BSIS staff will open the doors for you, allowing access to the elevators.

## Travelling to the Brussels School of International Studies

### By air

The nearest major airport to BSIS is Brussels Airport Zaventem (BRU), which has excellent transport links to Brussels. If you take the direct train from the Airport to Etterbeek station, we are located 800 metres away. Alternatively, take the airport bus (Number 12 or 21), alight at Diamant, take tram 7 or 25 and alight at Arsenal.

### By rail

The Etterbeek train station is 800 metres from BSIS and provides regular connections with Schuman, Brussels North and Brussels Midi stations.

### By road

BSIS is situated at Boulevard Louis Schmidt 2a on the corner of Waversesteenweg (Chaussée de Wavre).

### By tram

Take the 7 or 25 and alight at the Arsenal stop, from which BSIS is situated across the road.

### By metro

BSIS is a short walk from the Pétillon Metro station.

### By bus

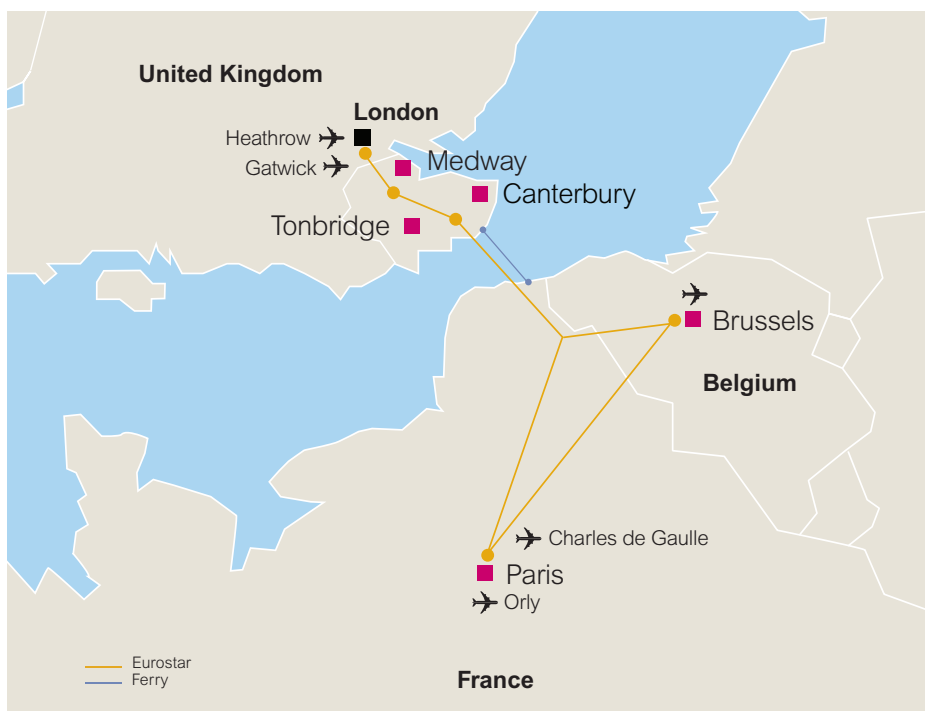
Take bus 34 from Porte de Namur or Trône and alight at the Arsenal stop.

### Map

[www.kent.ac.uk/maps/brussels](http://www.kent.ac.uk/maps/brussels)

This brochure was produced in July 2017. The University of Kent makes every effort to ensure that the information contained in its publicity materials is fair and accurate and to provide educational services as described. However, the courses, services and other matters may be subject to change. For the most up-to-date information, see [www.kent.ac.uk/ug](http://www.kent.ac.uk/ug) and for full details of our terms and conditions, see [www.kent.ac.uk/termsandconditions](http://www.kent.ac.uk/termsandconditions)

For the University to operate efficiently, it needs to process information about you for administrative, academic and health and safety reasons. Any offer we make to you is subject to your consent to process such information and is a requirement in order for you to be registered as a student. All students must agree to abide by the University rules and regulations at: [www.kent.ac.uk/regulations](http://www.kent.ac.uk/regulations)



## ONLINE VIDEOS

To find out what our students think, see our online videos at [www.kent.ac.uk/brussels/about/faq.html](http://www.kent.ac.uk/brussels/about/faq.html)







University of Kent, Brussels, Boulevard Louis Schmidt 2a,  
1040 Brussels, Belgium

T: +32 2 641 1721 F: +32 2 641 1720  
E: [ukbapplications@kent.ac.uk](mailto:ukbapplications@kent.ac.uk) [www.kent.ac.uk/brussels](http://www.kent.ac.uk/brussels)

University of  
**Kent**