

2018-2019

Welcome Guide



UHASSELT

KNOWLEDGE IN ACTION

2018 - 2019

WELCOME GUIDE
HASSELT UNIVERSITY FOR
INTERNATIONAL STUDENTS



WELCOME 4

HASSELT, DIEPENBEEK AND BELGIUM IN A NUTSHELL 6

1. Language 7
2. Climate 7
3. Hasselt 7
4. Integration programme 8
5. Emergencies: what to do 8

HASSELT UNIVERSITY 9

1. Introduction 9
2. Gender 9
3. Academic calendar 10
4. Education and examination regulations 11
5. Departmental coordinators 11
6. Study Career Coaches 12
7. Psycho-social support 13
8. University restaurant 13
9. Library 14
10. Internet and E-mail 14
11. Map of the campus 15

PRACTICAL INFORMATION 16

1. Administrative formalities 16
2. Taxes 18
3. Health insurance and health care 20
4. Accommodation 22
5. Mobile phones 22
6. Opening a bank account 23
7. Language courses 24
8. Travel 24
9. Traffic rules 27
10. Student jobs 28

LEISURE 29

1. International Council 29
2. Buddy programme 29
3. Student Unions 31
4. Sports 32
5. Cultural activities 34

ADDENDUM 37

1. Useful addresses 37
2. Useful translations 39

WELCOME TO HASSELT UNIVERSITY

Dear international student, researcher, visitor,

We are very much looking forward to welcoming you at Hasselt University.

Hasselt University is a young and dynamic institution, located in a green environment at a junction of European cultures. The Netherlands, Germany and the French speaking part of Belgium are all nearby. Hasselt itself is a cosmopolitan town with lots of exciting opportunities. It is only up to you to seize them!

The present guidebook should help you find your way at Hasselt University and in Belgium in general. It includes practical information and provides answers to questions about accommodation, public transport and administrative steps. We hope that you will soon feel completely at home.

There is an extensive practical guide available online that will provide you with further information: www.uhasselt.be/life-on-campus

Throughout your visit, our team will be available to help you so that your stay at our university is as successful as possible, both from an academic and a personal point of view.

Good luck and enjoy your stay!

The International Office
internationaloffice@uhasselt.be

Tel: +32 11 26 81 76

www.uhasselt.be/internationaloffice
www.facebook.com/hasseltuniversity

USEFUL CONTACTS AT OUR UNIVERSITY



ADMISSION AND ADMINISTRATION INTERNATIONAL STUDENTS

Leen Jorissen

leen.jorissen@uhasselt.be



ADMISSION AND ADMINISTRATION EXCHANGE STUDENTS

(E.G. ERASMUS)

Erika Vandersmissen

erika.vandersmissen@uhasselt.be



SUPPORT INTERNATIONAL STUDENTS AND STAFF

*(E.G. ACCOMMODATION,
VISA, INSURANCE)*

Marc Thoelen

marc.thoelen@uhasselt.be

HASSELT, DIEPENBEEK AND HASSELT UNIVE



RSITY IN A NUTSHELL



TIP: Waterproof clothing is useful at any time of the year

LANGUAGE

The three official languages of Belgium are Dutch, French and German. Hasselt and Diepenbeek are located in the Dutch speaking part of the country. Belgians are proud of their language skills. Three quarters of the population speaks at least two languages. Handy, if you are coming to Belgium to study or work!

CLIMATE

Belgium has a temperate climate characterized by moderate winters and pleasant summers. The climate is probably not the reason why you chose to study in Hasselt, since the weather is often unpredictable. Visitors can expect a downpour any time of the year. Snow is possible, but not frequent in winter.

HASSELLT

When you say the word Hasselt, local people immediately think of "jenever" (the juniper-flavored national and traditional liquor of Belgium and the Netherlands) and "speculaas" (a typical spiced almond biscuit). Over the past years Hasselt has grown into a hip and trendy city. Hasselt is the ideal city for those who love shopping, culinary treats and a dash of culture. In the modern cinema complex Kinepolis with 13 auditoriums, you can enjoy the latest films in ideal circumstances. For theatre, literature, contemporary dance and classical music you can visit the cultural centre of Hasselt. The Japanese garden and the nature domain Kiewit are a real treat for nature lovers. With about 77000 inhabitants, Hasselt is a city filled with charm and opportunity.

More information: visithasselt.be/en

INTEGRATION PROGRAMME: SOCIAL ORIENTATION COURSE AND DUTCH LANGUAGE COURSES

AGENTSCHAP
**INTEGRATIE &
INBURGERING**

You have just arrived in Belgium and it is all new to you? Or you have been here for some time, but you do not feel quite at home yet? "Inburgering"¹ helps you find your way.

Thanks to Inburgering you will get to know Belgium better. Are you looking for fun things to do in your spare time? Do you have any questions concerning your rights and obligations? Would you like to learn Dutch or meet new people? Inburgering offers a social orientation course, personal guidance and orientation to Dutch language courses (for more information about language courses we refer to page 24).

During the social orientation course you will learn about politics, history, work, housing, education, transportation, health and so much more. Your teacher will help you get started so you learn how to find the answers to all of your questions by yourself. The classes are in English and take place on campus (Diepenbeek). Furthermore, a personal counsellor will give you practical information on your integration programme and helps you build bridges so you get to know Belgian people and feel more at home.

What's more: it's for free. Nothing should keep you from getting started!

For more information, please contact: kristel.nowak@integratie-inburgering.be (011 30 56 49) or marc.thoelen@uhasselt.be.

EMERGENCIES: WHAT TO DO

If you have an emergency and you need the police, you call 101. When you need some information or the assistance of the police and it is not an emergency, you need to call the number of the police department of your region. For Hasselt and Diepenbeek this number is +32 11 22 29 82.

112 is the European international emergency number. If you need help in Belgium or Europe (fire department, ambulance, emergency doctor,...), you can call **112**.

¹ "inburgering" is the Dutch translation of "Integration"



HASSELT UNIVERSITY

INTRODUCTION

Hasselt University is situated in the heart of Europe, within a stone's throw of cities such as Brussels, Liège (French speaking part of Belgium), Aachen (Germany) and Maastricht (the Netherlands), while Paris and London are within a couple of hundred kilometres. There are two campuses: a campus in a green environment outside the city of Hasselt (Diepenbeek campus) and a campus right in the centre (Hasselt campus).

Hasselt University is an innovative university with a strong international orientation. Founded in 1971, it is the youngest university in Belgium. Hasselt University stands for its excellence in education, top research in leading fields and active commitment in innovation and entrepreneurship. The overall objective is to combine academic excellence with economic and social relevance. Hasselt University is ranked amongst the 5% best institutions worldwide in U-Multirank 2018 (an online tool designed with seed funding of the European Commission).

Furthermore, Hasselt University is ranked in the top 500 of the Times Higher Education World University Ranking, as well as number 15 in the Times Higher Education Best Small Universities Ranking and as number 84th in de Times Higher Education Young University Ranking

Approximately 6.395 students and 1296 staff members are connected to Hasselt University. Hasselt University offers attractive undergraduate, graduate and PhD programmes in its 7 faculties (Faculty of Business Economics, Faculty of Sciences, Faculty of Medicine and Life Sciences, Faculty of Law, Faculty of Architecture and Arts, Faculty of Engineering Technology, Faculty of Rehabilitation Sciences) and its School of Transportation Sciences.

GENDER

Hasselt University supports the “VLIR High Level Task Force Gender”, which promotes the support of women in academics. This means that we do not only promote girls to obtain a university degree, but we also encourage women in their academic career. You will probably have several female professors at Hasselt University!

ACADEMIC CALENDAR 2018-2019

Please note that the academic calendar is different for every programme. You can consult all calendars on our website: www.uhasselt.be/academic-calendars. International exchange students are most likely to participate in the semester system.

Indicative calendar for the semester programmes:

FIRST SEMESTER	SECOND SEMESTER	RESITS
Teaching Period From 17 September 2018 to 21 December 2018 Christmas holidays From 22 December 2018 to 6 January 2019 Study/Exams From 7 January 2019 to 2 February 2019 Leave or Project From 4 February 2019 to 10 February 2019	Teaching Period From 11 February 2019 to 24 May 2019 Easter holidays From 6 April 2019 to 22 April 2019 Study/Exams From 27 May 2019 to 22 June 2019	From 12 August 2019 to 31 August 2019

LEAVE
Thursday 1 November and Friday 2 November 2018 (Collective closure for All Saints Day + All Souls Day) Monday 11 November 2019 (Armistice Day) Monday 22 April 2019 (Easter Monday) Wednesday May 1 2019 (Collective closure Labour Day) Thursday 30 May and Friday 31 May 2019 (Collective closure for Ascension Day) Monday 10 June 2019 (Whit Monday) Thursday 11 July 2019 (Flemish Holiday) Thursday 15 August 2019 (the Assumption of the Virgin Mary)

It is very important to start attending classes in time. If you arrive at Hasselt University more than 15 days after the start of the study period, the faculty may refuse you as a student.

EDUCATION AND EXAMINATIONS REGULATIONS

The education and examinations regulations apply to all students and staff members at Hasselt University. Every year the education and examinations regulations are reviewed and approved by the Board of Governors of Hasselt University. An English translation can be found on our website:

www.uhasselt.be/study-info.



DEPARTMENTAL COORDINATORS (EXCHANGE STUDENTS)

If you have questions concerning your choice of subjects, exam schedules or other academic matters, please contact the following persons:

Faculty of Business Economics:

kristien.fransen@uhasselt.be

Faculty of Sciences:

ann.cuyper@uhasselt.be (Biology)

dirk.vanderzande@uhasselt.be (Chemistry)

carlo.vanderzande@uhasselt.be (Physics)

roel.braekers@uhasselt.be (Statistics and Mathematics)

fabian.difiore@uhasselt.be (Computer Sciences)

peter.vandoren@uhasselt.be (administrative)

Faculty of Medicine & Life Sciences / Faculty of Rehabilitation Sciences:

liesbeth.jamers@uhasselt.be

Faculty of Law:

ingrid.vrancken@uhasselt.be

Faculty of Architecture and Arts:

els.hannes@uhasselt.be (architecture)

jan.vanrie@uhasselt.be (interior design)

Faculty of Engineering Technology:

els.wieers@uhasselt.be

School of Transportation Sciences:

nadine.smeyers@uhasselt.be

STUDY CAREER COACHES (ENGLISH MASTER PROGRAMMES)

Do you have questions about the programme, curriculum, examination regulations, exam results or your progress with your studies? Or about the composition of your study pathway, or the possibility of modifying it? Do you wish to apply for one or more exemption(s)? Your programme's study career coach will be happy to help you.

Faculty of Business Economics:

klara.vrolix@uhasselt.be

Master Business Economics,
Business Engineering, Information
Systems Engineering

annelies.clijsters@uhasselt.be

Master of Management
Business Administration

Faculty of Sciences:

tine.huyh@uhasselt.be

Faculty of Medicine & Life Sciences:

heleen.vliex@uhasselt.be

Master Biomedical Sciences

martine.luwel@uhasselt.be

Master Physiotherapy

Faculty of Law:

heleen.vliex@uhasselt.be

Faculty of Architecture and Arts:

lut.vandenbosch@uhasselt.be

Architecture

alida.vanwijck@uhasselt.be

Interior Architecture

Faculty of Engineering

Technology:

kathleen.bovin@uhasselt.be

School of Transportation

Sciences:

tine.huyh@uhasselt.be





PSYCHO-SOCIAL SUPPORT

Students seeking support or advice in personal, social, relational or psychological matters can contact our resident social assistant Liesbeth Huber at liesbeth.huber@uhasselt.be or our student psychologists Philip Swerts and Majken Klomp at studentenpsycholoog@uhasselt.be.

UNIVERSITY RESTAURANT

Sandwiches, drinks, sweets, full lunches and dinners are available in the university restaurants in Diepenbeek and Hasselt. Hasselt University wishes to offer students healthy and cheap meals. Therefore your meal will be subsidized if you pay for it with your student/staff/visitor card.

When you register your student/staff/visitor card on the “ping ping website” (www.uhasselt.be/en-pingping), you can use the photocopyers and buy lunch at Hasselt University restaurants at a reduced price.





LIBRARY

As a registered student or visitor you are allowed to use the UHasselt library. More info: www.uhasselt.be/uuhasselt-library.

INTERNET AND E-MAIL

Upon enrolment students are automatically given a user-ID and a password. You also need those credentials to login to Blackboard, the digital learning environment that is used by Hasselt University (direct access: <https://bb.uhasselt.be>).

In several places on the campuses you can find "internet corners". Here you can quickly check your mail or search something on the internet. Furthermore, PC-rooms are available which can be used for individual study or group projects. Copying software and using your own software is strictly forbidden.

More detailed information can be found on our website: www.uhasselt.be/help-studenten-en

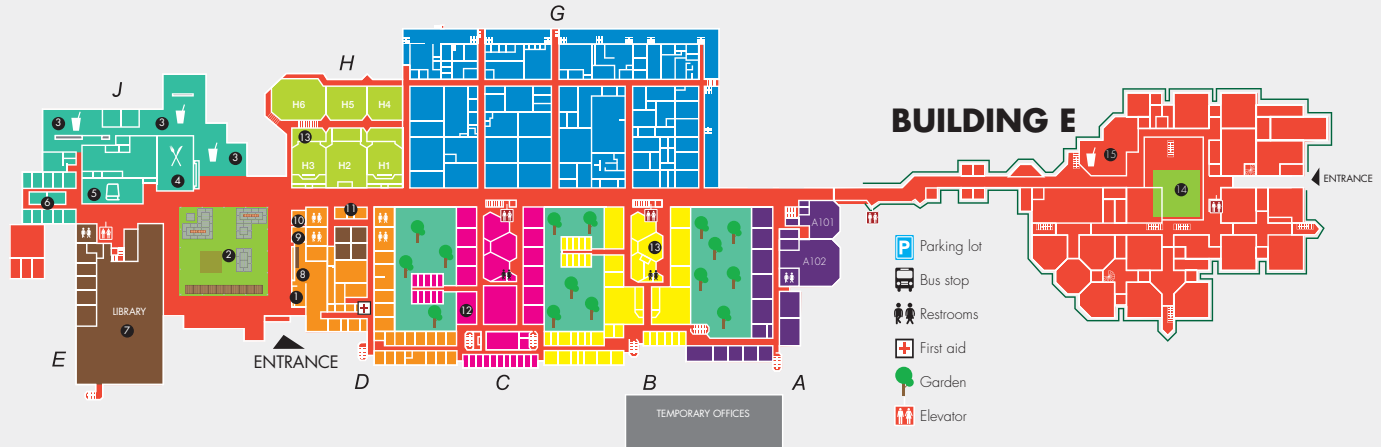
PLAN OF DIEPENBEEK CAMPUS

- 1 Main Reception Desk
- 2 Agora
- 3 Cafeteria
- 4 Restaurant
- 5 Book shop
- 6 Student associations and STURA
- 7 Library
- 8 Student's Office

- 9 Studenten Sport Limburg
- 10 Campus police
- 11 ATM - PingPing
- 12 Help desk
- 13 Logistical Support
- 14 Faculty of Architecture and Arts
- 15 Cafeteria Architecture and Arts Faculty
- 16 Temporary Offices

BUILDING D (MAIN BUILDING)

BUILDING E



PRACTICAL INFORMATION

TIP: Non-EU citizens who stay more than 3 months need to request written confirmation of their BIVR application if they want to open a bank account.



ADMINISTRATIVE FORMALITIES

Registration at Hasselt University

You are required to register as a (exchange) student or visitor at the Student Administration (Martelarenlaan 42, 3500 Hasselt) in order to get your student/staff/visitor card. This card allows you to make use of the UHasselt facilities and infrastructure such as the library, bike rent, university restaurants, etc.

For more information, please contact the Student Administration:
studentensecretariaat@uhasselt.be

REGISTRATION AT THE TOWN HALL

On arrival in Belgium all foreign nationals staying longer than one month must register at their local town hall **within eight working days**.

	DIEPENBEEK, DORPSTRAAT 14		HASSELT, LIMBURGPLEIN 1	
	AM	PM	AM	PM
Monday	09.00-12.30		09.00-12.30	13.30-17.00*
Tuesday	09.00-12.30	14.00-19.00	09.00-12.30	13.30-20.00*
Wednesday	09.00-12.30	14.00-16.30	09.00-12.30	13.30-17.00*
Thursday	09.00-12.30		09.00-12.30	13.30-17.00*
Friday	09.00-12.30		09.00-12.30	

**Every weekday from 9.00 am – 12.30 pm you can enter the Town Hall of Hasselt without an appointment...During the opening hours indicated in the afternoon, you can only visit the Town Hall if you have an appointment.*

	DOCUMENTS REQUIRED	DOCUMENTS TO RECEIVE
EU-citizen < 3 months	<ul style="list-style-type: none"> • passport or identity card • proof of enrolment Hasselt University • copy of your rental contract or correct address 	"melding van aanwezigheid" (announcement of presence)
EU-citizen > 3 months	<ul style="list-style-type: none"> • passport or identity card • 4 passport photographs** • proof of enrolment at Hasselt University • EHI-card or proof of insurance • proof of scholarship or proof of enrolment as Erasmus student or a declaration on honour of proof of solvency is also accepted • copy of your rental contract of correct address 	"verklaring van inschrijving" (statement of registration)
Non-EU-citizen < 3 months	<ul style="list-style-type: none"> • passport with visa C (if required) • 2 passport photographs** • proof of enrolment at Hasselt University • copy of your rental contract or correct address 	"aankomstverklaring" (statement of arrival) valid for 90 days (approx. 5 euros)
Non-EU-citizen > 3 months	<ul style="list-style-type: none"> • passport with visa D • 4 passport photographs** • proof of enrolment at Hasselt University • proof of scholarship, proof of solvency or proof of guarantorship • copy of your rental contract or correct address 	"bewijs inschrijving vreemdelingenregister (BIVR)"* (registration foreigners register, approx. 15 euros) Residence permit: 'A-card'***

* After registration at the local Town Hall, a police officer will pass by your residence to check that you actually live there before you receive your BIVR. If you are not at home you will receive a letter inviting you to report to the police station of your district.

** Passport photographs: strictly without any headgear. If you insist on wearing a headgear on the picture, you need to obtain a document, signed by an authorized imam. For more information, please contact + 32 11 875 961.

***A-Card: Pls. note the **expiration date** on the front of this card; so do not forget to renew it in time !

Changes/leaving Belgium

- Change of address: notify the Town Hall and alter the address in your student file.
- Leaving Belgium at the end of your studies/stay: notify the Town Hall.
- Leaving Belgium in the middle of your studies/stay: notify the Town Hall and the Student Administration: Leen Jorissen (leen.jorissen@uhasselt.be).
- Renewal of your residence permit: don't forget to go to the Town Hall at least 45 days before the expiration date.

TAXES

Taxes in Belgium

All guests, staying in Belgium for > 3 months, will be considered as 'Resident in Belgium' and therefore will receive several official letters and invoices regarding taxes. Below some more info:

Province tax:

35 EURO to be paid by everybody living in this province (Limburg). If you have the so-called 'VT-status' of your mutuality (meaning you have no or very low income), you can apply for a 50 % reduction by sending the Province a proof of your VT-status. You will then receive a new invoice for 17,5 EURO.

Waste tax:

This invoice, sent yearly by a company called 'Limburg.Net', asks you to pay for litter removal and handling. If however you already pay a similar fee, directly to your landlord, you can inform the company about this.

General Income Tax

In May/June you might receive a 'brown envelope', containing your tax declaration in Belgium and an extra envelop.

For those who had no Belgian income at all in the previous year:

- First go to 'My Academic file' and print a copy of your 'Proof of Enrolment' at UHasselt.
- Then take the red form in the envelop, go to the last page and look for the word 'Datum' on the bottom of the page, fill in the current date and sign the document at 'Handtekening'.

- Put this red form along with your 'Proof of Enrolment' in the extra envelop and send it by mail to the address as mentioned on it in 'Ledeberg'.

Tip: you could also bring it to the Taxes registration office in the Voorstraat 43 in Hasselt, that saves you a stamp!

For those who did have an income in the previous year, you might receive a 'proposal' (*Voorstel*). This proposal summarizes your income for the previous year and automatically calculates your taxes. The result might be 'positive' (you will receive money back) or 'negative' (you need to pay extra taxes).

- If you agree with this proposal (*voorstel*) you do not need to do anything.
- If you do not agree with this proposal, you need to go to one of the help offices, as mentioned below.

Help offices:

- City Hall of Hasselt or Diepenbeek organizes help-sessions
- Registratiekantoor FOD Financiën
Voorstraat 43, 3500 Hasselt

For those who are paid by UHasselt (full monthly salary), our HR-office will also offer a help session in June.

Please take note: the General Income Tax must be done by June 29th, 2019!

TAXES

HEALTH INSURANCE – HEALTH CARE

Health insurance

Individual health insurance is compulsory in Belgium.

If you are from an EEA country you are insured through your own national health service by the European Health insurance card (EHI). This card covers expenses in the event of illness abroad, and is valid for a maximum of one year.

When you see a doctor or a specialist, you will be given a “certificate of services provided”. In some cases, the pharmacist provides you with a document for refund purposes (certificate model 704). Bring these certificates, together with your EHI-card to the mutuality office. We recommend that you also acquire travel insurance.

However, if you are from a non-EEA country, you have to enrol in an all-inclusive insurance, called SIP (Student Insurance Program). If you are staying longer than 6 months you should also subscribe to the health insurance fund CM (Christelijke Mutualiteit) or ‘De Voorzorg’.

This can be done during the Orientation Program in September or by going to their office in Diepenbeek.

Also note that a representative of CM will hold office **on the first Tuesday, between 13.30-16.30, of the following months: September, October, November, December, February, April and June.**

Tip: Always keep all medical documents you receive for later reimbursement.

When visiting a doctor, pharmacy or hospital always take your EHI or ID card with you.

In general always visit a local ‘home’ doctor first. Never go to hospital directly, unless it is an emergency!

More info on reimbursement and SIP:

www.uhasselt.be/medical-refund / www.sipinsurance.eu

For further information about health insurance, visit:

www.cm.be/international-website

Health Care

Doctors:

- Dr. B. Van den Berg, Patersplein 3, Diepenbeek, 011 23 50 01
- Dr. G. Lambrichts, Wijkstraat 11, Diepenbeek, 011 35 20 99
- Dr. P. Decoutere, Willekensmolenstraat 135, Hasselt, 011 22 51 52
- Dr. A. De Graaf, Thonissenlaan 35, Hasselt, 011 22 33 12

Or check the website: www.mediwacht.be

Dentists:

- Dentist Luc Cosemans, Ganzebroekstraat 10, Diepenbeek, 011 32 18 01
- Dentist Chris Kruijen, Marktplein 38, Diepenbeek, 011 32 13 83
- Dentist-centre CMT, Luikersteenweg 232 b2, Hasselt, 011 28 45 45
- Dentist-centre Molaar, Maastrichtersteenweg 198/1, Hasselt, 011 76 28 68

ADDRESSES OF THE HEALTH INSURANCE FUND CM

Didier Verding Kerklaan 6 bus1, Diepenbeek

Vismarkt 11, Hasselt

Prins-Bisschopssingel 75, Hasselt

Eye doctor:

- Dr. K. Noben, Stationsstraat 88, Diepenbeek, 011 33 11 22

Hospitals:

- Virga Jesse Campus, Stadsomvaart 11, Hasselt, 011 33 55 11
- Salvator Campus, Salvatorstraat 20, Hasselt, 011 28 91 11

Urgent medical assistance:

- 112 (= international emergency number)

Medical assistance at night and during the weekend:

- Doctor: one central number: 011 33 65 33

Detox centre: (for all kinds of intoxication) +32 70 245 245



Tip: Pharmacists can be identified by a green cross; at night and during the weekend the name of the pharmacist on duty is displayed in the window of each pharmacy. You can also find the addresses online: www.apotheek.be

ACCOMMODATION

If you are looking for a student room, check out available rooms at:

www.uhasselt.be/accommodation.

More info and help: marc.thoelen@uhasselt.be or huisvesting@uhasselt.be

If you prefer to look for a room once you are in Belgium, you can also choose to stay several days or more in the Youth Hostel in Hasselt and look for the best place with your own eyes! The hostel is perfectly located, close to Hasselt railway station and at a walking distance of the centre of Hasselt. It is a brand new building with a young, modern look where you can spend some time exploring by strolling around Hasselt and waiting for your new home.

For more information you can contact the Hostel on this address:

www.jeugdherbergen.be/en/youth-hostels/city-hostels/hasselt.

If you are PRE-registered at Hasselt University (www.uhasselt.be/ApplicationForm) you can even stay there at the 'Members Rate' which will give you a 10% discount. Prices range between €23 and €29 depending on your age and type of room.

Tip: Once you have found a place to live, please put your name on the doorbell.

MOBILE PHONES

If you wish to use a mobile phone in Belgium you should be aware that there are a few major competing networks:

- proximus: www.proximus.be
- base: www.base.be
- mobile vikings: www.mobilevikings.com
- orange: www.orange.be

You can buy a local number and calling credits in many shops or through their website.



OPENING A BANK ACCOUNT

It is safer to deposit your money in a bank rather than leaving large amounts of cash in your room or walking around with it.

If you choose to open a bank account in Belgium you will need the following documents:

- a valid passport or identity card, proof of enrolment at Hasselt University;
- a copy of your rental contract;

additional documents for non-EU citizens staying over 3 months: written confirmation of BIVR application, proof of scholarship, visa. For more information on the BIVR application, please see page 17.

A current account provides you with a cash card for 24-hour cash dispensers. Campus Diepenbeek has an ATM inside the university.

There are many branches of different banks in Hasselt. Most banks are open on weekdays from 9.00 until 12.00 and from 14.00 until 16.00. Some banks are open on Saturday morning and have late opening hours once a week.

Addresses:

- BNP Paribas Fortis, Ridder Portmansstraat 1, Hasselt
- KBC, Gouverneur Verwilghensingel 102, Hasselt
- Belfius, Havermarkt 36, Hasselt
- Crelan, Stadsomvaart 1, Hasselt
- BNP Paribas Fortis, Marktpllein 18, Diepenbeek
- KBC, Kapelstraat 36, Diepenbeek
- Belfius, Dorpsstraat 24, Diepenbeek
- Crelan, Varkensmarkt 10 B11, Diepenbeek
- ING, de Schiervellaan 10, Hasselt



Tip: If you register your student/guest card on the “ping ping website” (www.uhasselt.be/en-pingping) you can use the photocopiers and buy lunch at all Hasselt University restaurants at a reduced price.

LANGUAGE COURSES

UHasselt offers free Dutch & English language courses. For more information, please check out the website: www.uhasselt.be/Language-courses

- If you would like to study Dutch, **Agentschap Integratie en Inburgering** performs a screening of students and refers them to educational institutions. The institutions offer Dutch language courses on various entry levels and at a modest price (or even for free if you follow the integration programme, see page 8). If interested, please contact: elly.vincken@integratie-inburgering.be (011 30 56 11).

CommArt International, spin-off of Hasselt University, offers a varied set of e-learning packages (to learn Dutch and other languages) which are characterized by a multimedia approach, combining text, sound and image. The LinguaCom e-learning modules aim at the communicative beginners' level A1-A2 of the Common European Framework of Reference for Languages. The Plurilingua series focuses on linguistic aspects as well as intercultural differences which influence the communication process. You can get a 25% discount if you order through the website of CommArt International. For more information, please consult the website (www.commart.be/en) or contact: willy.clijsters@uhasselt.be or martine.verjans@uhasselt.be.

TRAVEL

Documents required

For a citizen of a country belonging to the EEA (+ Switzerland and Monaco), a national identity card is all you need to travel from one European Union country to another. No passport or visa is required.

Citizens of all non-EEA countries must have a passport with the appropriate visa.

The type C or Schengen visa is for stays under 3 months and allows you to enter Belgium. It also entitles you to travel through a part of Europe, namely the "Schengen area".

The following countries are part of the Schengen area: *Austria, Belgium, Czech Republic, Denmark, Estonia, Finland, France, Germany, Greece, Hungary, Iceland, Italy, Latvia, Liechtenstein, Lithuania, Luxembourg, Malta, the Netherlands, Norway, Poland, Portugal, Slovakia, Slovenia, Spain, Sweden and Switzerland.*

The UK is not one of the countries in the Schengen Area. Be careful with Christmas shopping in London! You might get into the UK but won't be able to return to Belgium!

For stays longer than 3 months, you will need a visa type D or Authorisation for Provisional Sojourn (also referred to as the "Student Visa"). This applies to all international students who do not belong to the EEA area, Switzerland or Monaco.

When travelling, always take your international passport and residence permit with you, even when visiting a city as nearby as Maastricht (The Netherlands).

Means of transportation

Railway

The Belgian railway offers various cut-price formulas to travel in Belgium and Europe. You can find more information on the website www.b-rail.be or at the railway station. Here are some of the most commonly used:

Go-pass 10: if you are under 26 years of age, your go-pass entitles you and your friends (under 26) to 10 second class single trip between two Belgian stations. The go-pass is valid for 1 year and costs 52 euros.

Rail-pass: similar to the go-pass, but without an age limit, it costs 77 euros.

You can also travel by the high-speed Thalys train from Brussels, Antwerp or Liège to a lot of big cities such as Paris, Amsterdam, Rotterdam, Schiphol, Den Haag, Aachen, Köln and many more (www.thalys.com). Another option is the Eurostar train from Brussels to London, Paris, Lille and Amsterdam (www.eurostar.be).

Tip: Buy a Campuspas: through your digital 'student file – registration for Campuspas' you can apply for this bus pass which allows you to travel between Hasselt and Diepenbeek for a full year. The Campuspas costs 20 euros.





Bus

The name of the local bus company is “De Lijn”. Bus numbers BP, 1, 36, 45 and 20a take you from Hasselt railway station to Hasselt Campus in 10 minutes.

Bus numbers 36, 45 and 20a take you from Hasselt railway station to Diepenbeek Campus in 20 minutes. More information on bus services can be found on the website www.delijn.be.

Bicycle

Hasselt University gives you the option of hiring a bike for free after paying a warranty of 70 euros.

In order to speed up the whole process, please proceed as follows, if you want to have a bike from the first day:

- go to citybike.uhasselt.be and create a login. Please NOTE: *when your Home Address shows another country but Belgium, you will NOT have to fill in the so-called ‘National Number’*;
- then go to ‘Rent a bicycle’, fill in all fields, and print your contract;
- **read/print the ‘Rent Regulations’**;
- pay the 70 EUROS deposit via bank transfer, if possible, and bring a proof of payment;
- alternatively you can pay in cash (only at Fietsbasis Hasselt) or MAES-TRO-card while here.

Tip: Bus tickets are sold in the bookshop at Diep without a valid ticket. In case you receive a fine,

Airplane

Belgium has a number of commercial airports, but the two major international airports are Brussels Airport ("Brussels Nationaal") in Zaventem and Charleroi Airport ("Brussels South") in Charleroi. Furthermore, Maastricht Airport in Maastricht, the Netherlands is also very near.

Please be aware that every passenger travelling by train to or from Brussels National Airport has to pay a "Diabolo fee" on top of their ticket price. Please consult the following link to read more about the Diabolo fee:

www.belgianrail.be/en/travel-tickets/tickets/diabolo-fee-from-airport.aspx

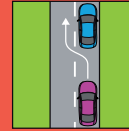
Taxicabs

When you arrive at Hasselt station, there are taxicabs ready to drive people around. So keep in mind that you can take one if you are not sure about your destination or if you don't want to walk home. You can check for more information via this link: www.hasseltse-taxi.com/EN/taxi

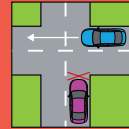
On Sunday evenings, a taxi will be available to take you from Hasselt station to your accommodation at 21:45 and at 22:15. Tickets have to be bought in advance at the Student Facilities Office for €1,00. You also have to request a taxi in advance on www.taxihtm.be/nl/studenten.

enbeek Campus. Do not take public transport
please pay as soon as possible.

TRAFFIC RULES



**DRIVE ON THE RIGHT,
OVERTAKE ON THE LEFT.**



**PRIORITY IS GIVEN TO THE RIGHT;
DRIVERS MUST STOP FOR TRAFFIC
JOINING FROM THE RIGHT.**



**DRINKING AND DRIVING IS
PROHIBITED, FOR CYCLISTS TOO.**



**CYCLING ON THE CYCLE TRACK
IS COMPULSORY.**



**USE LIGHTS IF YOU ARE
CYCLING AT NIGHT.**



**TAKING PASSENGERS ON YOUR
BICYCLE CARRIER IS STRICTLY
PROHIBITED.**

STUDENT JOBS

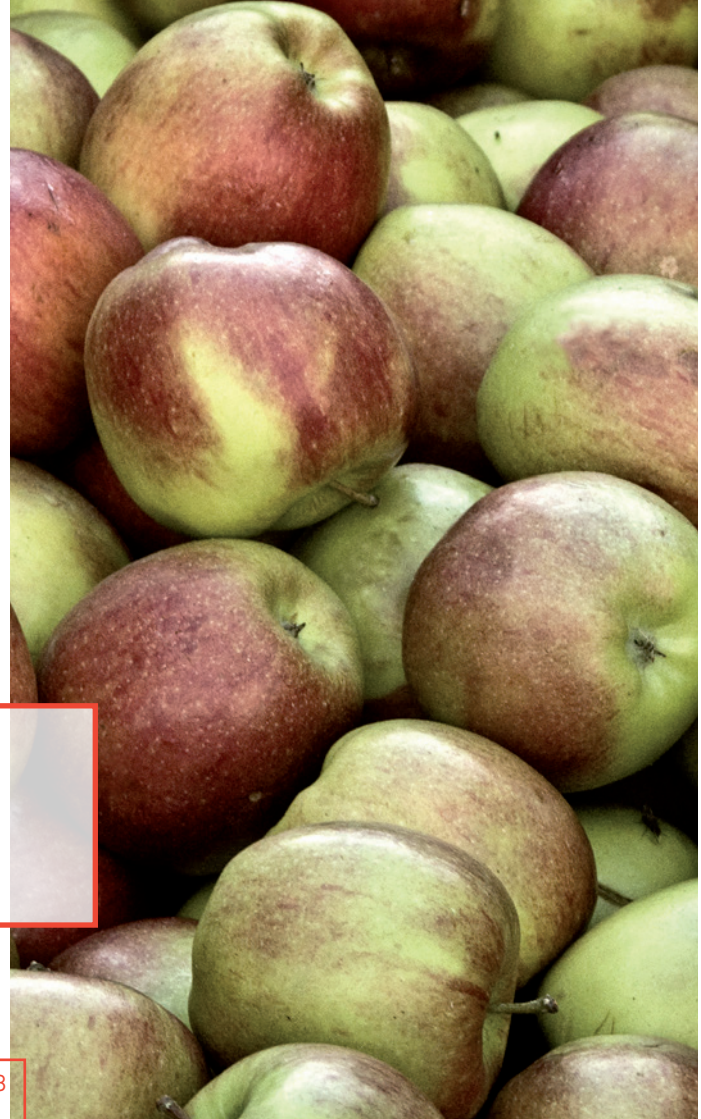
While you are studying (bachelor or master level) at Hasselt University, you may want to combine your studies with a (part-time) job. As a student, you are allowed to work 475 hours per calendar year.

If you come from a EEA country, you are free to start looking for a job in the area. However, as a non-EU member who wants to work during the academic year, you should apply for a 'work permit, type C' at the local city hall. They have all the necessary documents.

During school holidays you can work without a work permit. However, students who arrive in Belgium during the summer preceding the academic year in which they are registering are not allowed to work during that period.

For more info: www.uhasselt.be/student-employment

Tip: During the spring, summer and autumn, many jobs will be available in the local fruit sector, fruit picking for example.



LEISURE

THE INTERNATIONAL COUNCIL

stu
ra

» Studentenraad
Universiteit Hasselt

The International Council is part of StuRa (the Student Council), but specifically for international students. The International Council represents the international students and takes care of any concerns the students might have during their stay in Belgium.

Feel free to join the International Council or channel your problems or concerns on: internationalcouncil@uhasselt.be and follow the International Council on Facebook: www.facebook.com/uhasselt.intl.council.

BUDDY PROGRAMME

The International Office organizes a Buddy Programme: a match up between a Hasselt University student living in Belgium and an international student. This can provide you a helping hand as you settle down and it can make your integration at Hasselt University easier. You can request a buddy via your pre-registration file. More information at www.uhasselt.be/International-activities.





STUDENT UNIONS

International student unions

ESN Hasselt - association for exchange students



Membership costs €8.00.

Activities: pub crawls, barbecue, city trips, parties,...

Website: esn.aeshasselt.eu

Email: esn@student.uhasselt.be

Facebook: www.facebook.com/esnhasselt

Faculty student unions

JOSS - student and alumni of Statistics, with a lot of international members

Website: www.uhasselt.be/JOSS

Facebook: www.facebook.com/305943376094213

Biomedica - society for Biomedical Sciences students

Facebook: www.facebook.com/biomedicadiepenbeek

DIP's - society for Chemistry and Biology students

Facebook: www.facebook.com/studentenvereniging.dips

Commeatus - society for Transportation Sciences students

Facebook: www.facebook.com/commeatus.diepenbeek

Hermes - society of the faculty of Applied Economics.

Facebook: www.facebook.com/hermesuhasselt

Filii Lamberti - society for students of mathematics, physics and informatics.

Facebook: www.facebook.com/filii.lamberti

Miezerik - society of the Faculty of Medicine

Facebook: www.facebook.com/miezerik

Themis - society of the Faculty of Law

Facebook: www.facebook.com/Themis.UHasselt

Sofa - society of the Faculty of Architecture

Facebook: www.facebook.com/studentenvereniging.sofa

A.S.G. - society of the faculty of Industrial Sciences

Facebook: www.facebook.com/asgdiepenbeek

Rekinéa - society of the faculty for Rehabilitation Sciences and Physiotherapy

Facebook: www.facebook.com/rekineadiepenbeek

SPORTS

If you want to practice sports, there are lots of possibilities in Hasselt. 'Studentensport Limburg' offers an extensive selection of sports for students, from ball sports to shape workouts, dance classes and combat-centred sports. All these activities are organised on or around the campus of Hasselt and Diepenbeek.

There are also reductions for students with a sports card. Discover all sport activities and schedules on www.studentensportlimburg.be/en.





Sports card

A sports card gives you access to all kinds of sports activities at reduced prices. You can have discounts on climbing, swimming, ice skating,...

You can register for your sports card in your student file (register for - sports event).

The sports card costs € 20, but some mutualities offer a reimbursement on this price. The CM will repay € 15 of the sports card.

For more information: www.studentensportlimburg.be/en

Contact: sport@uhasselt.be

Sports coordinator: Katleen De Wit (katleen.dewit@uhasselt.be) and Martine Libens (martine.libens@uhasselt.be)

Fitness

Hasselt University offers a discount for students who have a personal fitness subscription. You can have an intervention of € 75 for a personal subscription for a year.

ATTENTION! CONDITIONS FOR INTERVENTION FITNESS MEMBERSHIP:

- You have a sports card.
- It has to be a personal subscription for a full year or an academic year.
- The subscription has to start **before the 31st of March.**
- You need to apply for the intervention **before the 1st of April.**

You can find a form for intervention in your student file 'aanvraag tussenkomst fitness' or at the student facilities desk. Fill in the form and add your proof of payment, a copy of your subscription and a copy of your sports card. The intervention will be paid on the bank account mentioned in your student file. If you have a Belgian bank account, add this one to your student file.

- No intervention for Basic Fit!

Fitness centers in Hasselt or Diepenbeek:

i-fitness Hasselt, St. Jozefstraat 10.2.1 (above Media Markt), 3500 Hasselt

Basic-Fit Hasselt, Badderijstraat 19, 3500 Hasselt

Basic-Fit Diepenbeek, Ginderoverstraat 7, 3590 Diepenbeek

Kapermolen swimming pool

Kapermolen swimming pool is the public swimming complex of Hasselt. It has indoor and outdoor pools, an outdoor relax area and a beach bar. Students with a sports card have a free entrance to the complex. Make sure you bring your student card and sports card to Kapermolen. You can find the opening hours on www.hasselt.be/kapermolen.

Address: Koning Boudewijnlaan 22, Hasselt

CULTURAL ACTIVITIES

Expand your horizon, visit some historical Belgian towns!

BRUSSELS is the capital of Belgium and the administrative centre of the European Union. The vibrant atmosphere of Brussels is enhanced by picturesque medieval streets, lively squares, impressive monuments, interesting restaurants and an active cultural life. The most famous attractions are the Grand Place (main square), the Atomium and the Manneken Pis statue.

ANTWERP, daughter of the river Scheldt, is the second largest city in Belgium. It is a splendid city with numerous architectural highlights, most of which date from the 16th and the 17th century. Antwerp is also known as the diamond centre of the World. If diamonds really are a girl's best friend, then most of the ladies amongst you will not want to miss out on a visit to the diamond district near the railway station.

BRUGES is called: 'the Venice of the north'. This splendid medieval city is one of Belgium's crown jewels. In no other European city are the feel and look of medieval times as present as in this city close to the north sea. As a testament to its medieval beauty, Bruges has been named an UNESCO World Heritage Site.

GHENT is the fourth largest city in Belgium with around 259,000 inhabitants.



It is not as big as Antwerp but bigger than Bruges. It is also less well-known to tourists than the often praised Bruges. However, for some people Ghent is the real diamond of Flanders and Belgium. In a unique way, Ghent has managed to preserve its medieval power while keeping up with modern times.

AACHEN is a city in Germany that lives and breathes Europe. It is practically Europe in miniature. Aachen, on the border with Belgium and the Netherlands, has encapsulated the spirit, values and ideals of Europe since the days of Charlemagne. Indeed the Charlemagne Prize for services to European unity has been awarded at Aachen's town hall since 1950.

Hasselt University offers a varied programme of cultural activities for all foreign students.

TIMING	ACTIVITY	LOCATION	ORGANISATION
12 - 13 - 14/09/2018	Orientation days	Hasselt/Diepenbeek Campus	International Office & ESN
17 - 21/09/18	Welcome Week	Hasselt/Diepenbeek Campus	ESN
17/09/2018	Te-KILL-ya party	Koestal Hasselt	ESN
18/09/2018	Lasergaming	Hasselt	ESN
19/09/2018	Pizza party	Diepenbeek Campus	ESN
20/09/2018	Karaoke Irish & TD Fitlink	Irish Pub Hasselt (Karaoke) & Fitlink Diepenbeek	ESN
21/09/2018	Welcome BBQ	Diepenbeek Campus	ESN
3 - 13/10/2018	Fair Trade Week	Hasselt/Diepenbeek Campus	ESN, International Council, International Office
8/10/2018	Photo booth & Oxfam Stand	Diepenbeek Campus	International Office
09/10/2018	Fair Trade Panel discussion	Hasselt Campus	International Office
10/10/2018	Africa Film Festival – Fair Trade Movie	Diepenbeek Campus	International Office
11/10/2018	Fair Trade Breakfast	Diepenbeek Campus	ESN, International Council, International Office
October	Beer pong	To be determined	ESN
October	Pub crawl	To be determined	ESN
October – November	City trip	To be determined	International Office
November	Language café	To be determined	ESN
November	Cantus	To be determined	ESN
November	Traffic Light Party	To be determined	ESN

3 - 10/12/2018	Week of the Human Rights	Hasselt/Diepenbeek Campus	ESN, International Council & International Office
3 - 4/12/2018	Marathon Amnesty International	Diepenbeek Campus	ESN, International Council & International Office
5/12/2018	Africa Film Festival – Refugees Movie	Hasselt Campus	International Office
10/12/2018	Day of the Human Rights – Breakfast & Testimonials	Diepenbeek Campus	ESN, International Council & International Office
December	City trip	To be determined	International Office
December	Goodbye Party	To be determined	ESN
11/02/2019	Orientation day	Hasselt/Diepenbeek Campus	International Office & ESN
11 - 15/02/2019	Welcome Week	Diepenbeek Campus & Hasselt	ESN
February - March	City Trip	To be determined	International Office
21/03/2019	World Evening	Diepenbeek Campus	International Office
March	Beer pong	To be determined	ESN
March	Pub crawl	To be determined	ESN
March - April	City trip	To be determined	ESN & International Office
April	Language café	To be determined	ESN
April	Cantus	To be determined	ESN
April	Traffic Light Party	To be determined	ESN
May	Goodbye Party	Hasselt	ESN
June	Closing BBQ	To be determined	ESN

For updates, please check: www.uhasselt.be/cultural-activities.

ADDENDUM

USEFUL ADDRESSES

Police

Local police Limburg Regio Hasselt (LRM)

Zwarte Brugstraat, Hasselt

Emergency calls: 101

Other calls: 011/93 89 38

Fire Department

Hasselt: 011/24 88 88

Emergencies: 112 (you will be connected to the emergency dispatch switchboard).

Laundry

HASSELT:

- WashNDry, Demerstraat 107
- Pascale, Oude Luikerbaan 100
- Biancha, Kuringersteenweg 93
- Miele, Overdemerstraat 118

DIEPENBEEK:

- Speed Queen, Dorpsstraat 4
- Mr. EcoWash Diepenbeek, Nieuwstraat 167

Copy Services

HASSELT:

- Copy & Design Koning Boudewijnlaan 4
- Druk & Copservice Bampslaan 10



Places of worship

Catholic churches

DIEPENBEEK:

- St. Servatius church, Strobanderplein Diepenbeek (every first Sunday of the month there is a service in English at 10 a.m.)
- H.Hart Church , Patersplein Rooierheide Diepenbeek

HASSELT:

- Cathedral: Vismarkt w/n
- Church Godsheide: Kiezelstraat w/n
- Church Sint-Katarinawijk: Sint-Katarinaplein w/n

Protestant churches

HASSELT:

- United Protestant Church: Kuringersteenweg 81

Evangelical churches

HASSELT:

- Evangelical Community "De Zaaier": Runkstersteenweg 303

DIEPENBEEK:

- Evangelical Community Diepenbeek: Begoniastraat 9

Orthodox churches

GENK:

- Greek Orthodox Church: G.A. Galopinstraat 21
- Oekraï'n Orthodox Church: Hulshagenstraat w/n

Mosques

HASSELT:

- Badr Mosque: Mouterijstraat w/n

Jewish synagogues

ANTWERP:

- Synagogue Shomré Hadass: Terlitstraat 35

BRUSSELS:

- The Great Synagogue: Regentschapsstraat

Buddhist stupa

SCHOTEN:

- Buddhist Stupa: Kruispadstraat 33

More information can be obtained from our campus pastor:

karin.daniels@uhasselt.be

Embassies

A list of foreign embassies in Belgium can be found at the following address:

http://diplomatie.belgium.be/en/services/embassies_and_consulates/



USEFUL TRANSLATIONS

ENGLISH - DUTCH

HEALTH

General practitioner - Geneesheer / arts
Pharmacist - Apotheker
Dentist - Tandarts
Physiotherapist - Kinesist
Insurance - Verzekering

NUMBERS

one - één
two - twee
three - drie
four - vier
five - vijf
six - zes
seven - zeven
eight - acht
nine - negen
ten - tien

AVAILABILITY

Open - Open
Closed - Gesloten
Before noon/morning (am) - Voormiddag (vm)
Afternoon (pm) - Namiddag (nm)
Holiday - Verlof/vakantie

DAYS OF THE WEEK

Monday (Mon) - Maandag (Ma)
Tuesday (Tues) - Dinsdag (Di)
Wednesday (Weds) - Woensdag (Wo)
Thursday (Thurs) - Donderdag (Do)
Friday (Fri) - Vrijdag (Vr)
Saturday (Sat) - Zaterdag (Za)
Sunday (Sun) - Zondag (Zo)

ACCOMMODATION

For rent - Te huur
For sale - Te koop

GENERAL EXPRESSIONS

How much does this cost? - Hoeveel kost dit?
Where is the bus stop? - Waar is de bushalte?
What do you call this? - Hoe heet dit?
Where can I find a doctor? -
Waar vind ik een dokter?
Thank you - Dank u / Bedankt
Here you are - Alstublieft
Hello - Goedendag
See you/goodbye - Tot ziens

FOOD, BEVERAGES AND OTHER NECESSITIES

Beer - Bier
Bread - Brood
Milk - Melk
Coffee - Koffie
Cheese - Kaas
Ham - Hesp
Eggs - Eieren
Washing powder/detergent -
Waspoeder
Blanket - Deken
Pillow - Kussen
Sheet - Laken
Mattress cover - Matrasbeschermer
Duvet - Dekbed
Towel - Handdoek
Kitchen towel - Keukenhanddoek



Campus Hasselt | Martelarenlaan 42 | BE 3500 Hasselt
Campus Diepenbeek | Agoralaan Gebouw D | BE 3590 Diepenbeek
www.uhasselt.be/en