

ROSKILDE UNIVERSITY (RUC)



Roskilde
Denmark

KEY FACTS

Subject Area Biological Sciences

Language Danish or English but Exchange students should select modules taught in English, B2 is required in English.

Academic Calendar

Semester 1	Early September to Late January
Semester 2	Early February to Late June

Module Catalogue Have a look through [the module catalogue](#) for modules available to exchange students.

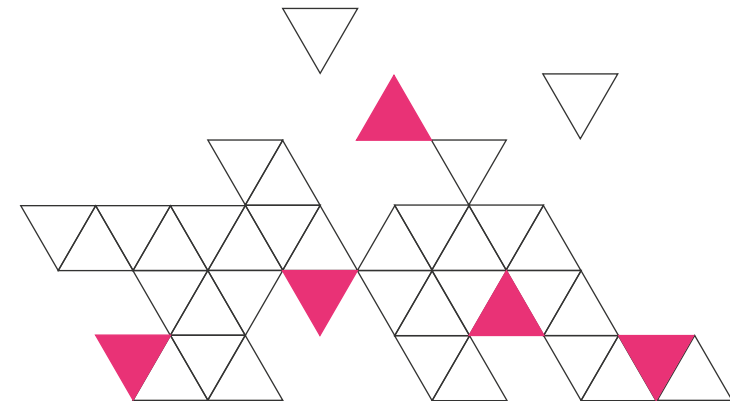
Financial Support As a UK Erasmus student, you are entitled to receive an [Erasmus Grant](#) for your time away at a participating Erasmus institution.





CONTENT

- 4 The City
- 5 The University
- 7 Accommodation & Living
- 8 Contacts
- 9 Student Experiences



ROSKILDE, DENMARK

Roskilde, which is one of Denmark's oldest cities, has Viking ships, a cathedral, a university, a national laboratory, and of course, Roskilde Festival.

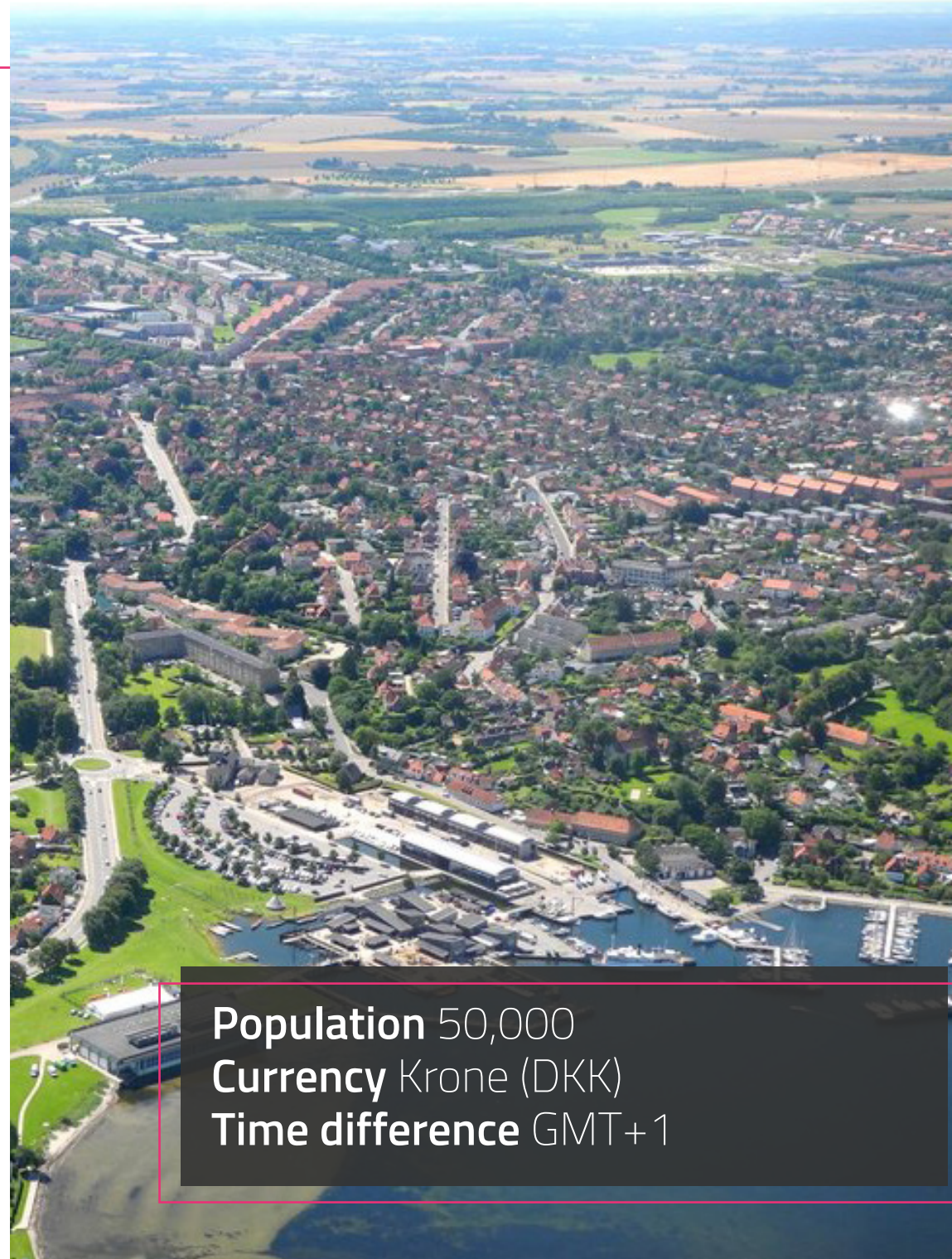
Roskilde was a Viking trading place more than 1000 years ago. At the Viking Ship Museum you can see remains of Viking ships from the 11th century and sail like a Viking out on the fjord. In the centre of Roskilde is Roskilde Cathedral, the burial place of Danish kings and queens. The church is an early example of French-influenced gothic architecture and features on UNESCO's list of world cultural heritage.

Roskilde also offers a modern cultural life with pedestrianised shopping streets and squares. During the summer, Roskilde Festival, which is northern Europe's largest culture and music festival, attracts thousands of people. In July, fans pour into town for the four-day Roskilde Festival, which vies with Glastonbury for the title of Europe's biggest rock festival. Anyone who's anyone on the international scene has played here; Neil Young and Red Hot Chili Peppers were on the 2016 lineup.

If you're not a festival fan, escape from the warm beer and toilet queues and relish the town instead. The city is compact enough to visit the main sights on foot (or via bike). There should be something here to please most discerning culture vultures, ranging from excellent historical museums to cutting edge art. Roskilde is known as being one of the top Danish cities for shopping with an appealing pedestrian shopping zone plus two weekly markets.

MORE INFO

denmark.dk
lonelyplanet.com
visitroskilde.com



Population 50,000
Currency Krone (DKK)
Time difference GMT+1

ROSKILDE UNIVERSITY (RUC)

Roskilde Universitet



Roskilde University's primary objective is to contribute to experimental, innovative forms of research, learning and problem-solving that contribute to society's development

Roskilde University was originally established in order to challenge academic traditions and to experiment with new ways to create and acquire knowledge. At RUC we cultivate a project and problem oriented approach to knowledge creation, because we believe that the most relevant results are obtained by solving real problems in collaboration with others. We employ an interdisciplinary approach because no major problems are ever resolved on the basis of any single academic discipline alone. We also cultivate transparency, because we passionately believe that participation and knowledge-sharing are prerequisites for freedom of thought, democracy, tolerance and development.

At Roskilde the focus is not only on academic studies, but also on the social environment. Students are affiliated with so-called "houses", which is a distinguishing feature of RUC. When you begin your studies at RUC, you belong to a house together with about 120 students; this is where you attend classes and it is the workplace for your professors and supervisors.

 ruc.dk

 Guide for International Students

 University Videos

Erasmus code DK ROSKILD01

No of students 8,800

Style of study Education at Roskilde University is based on the following principles: Interdisciplinary and problem-orientation, project work, teamwork and close interrelation between research and education.

Grade system There are two evaluation systems in Denmark, the 7-point grading scale and pass/fail, where 02 is the minimum grade for passing an exam.

Grade	Description	ECTS	Old Scale
12	Excellent	A	13/11
10	Very good	B	10
7	Good	C	9/8
4	Fair	D	7
02	Meeting minimum requirements	E	6
00	Not meeting the minimum	Fx	5/03
-3	Unacceptable	F	00



Application Times

Please note that you have to apply to the exchange programme in your current year by 20 December. Applications for the host university must be submitted between April and May or September and October (depending on the Trimester), in the year following your initial application.

Going abroad in Trimester 1	Initial Application Form	20 December (current year)
	Host University's Form	April – May (following year)
Going abroad in Trimester 2	Initial Application Form	20 December (current year)
	Host University's Form	September – October (following year)

ACCOMMODATION & LIVING



RUC has secured a limited number of rooms for exchange students.

The residence halls have kitchen and laundry facilities. The rooms are furnished with basic furniture and equipped with the most necessary kitchen utensils. However, you have to provide sheets and towels. For the residence halls on campus, you will need to put down a deposit and pay 3,300-4,100 DKK (440€-550€) per month depending on the room. There are 4 kinds of university accommodations.

Living Costs

In terms of living expenses, it is difficult to predict how much money students will need. To give a rough estimate of the average monthly expenses 700€ to 1,000€ can be expected.

Accommodation: DKK 3,000-5,000 (400€-535€)

Food: DKK 1,500-2,000 (200€-270€)

Transportation: DKK 300-1,100 (40€-150€) – depending on whether you live on campus or in the city

Books: DKK 450-600 (60€-80€)

More on Cost of Living in Roskilde

 [Numbeo.com](https://numbeo.com)

Transport




Biking, walking, and taking public transportation are more than enough to get you around town. You can purchase different types of travel cards or tickets at any **DSB** ticket office. At stations and bus stops, you will find coloured zone maps by which you can calculate the fare for your journey. The **buses** are very comfortable and cost the same as the trains. It is regulated the same way with the zones. The buses usually have shorter routes. Check out the **journey planner** when you are going somewhere by public transportation.

Many Danish people ride a bicycle for their everyday transportation. It is possible to buy a second-hand bicycle to save money. Supermarkets like Kvickly and Bilka sell new bicycles at reasonable prices. If you are only here for one semester, you might want to **rent** a bicycle.

CONTACT FOR INCOMING STUDENTS



If you're interested in the programme or you have any queries, please contact the Edinburgh Napier University's Global Mobility team first:

-  studyabroad@napier.ac.uk
-  0131 455 4574 or 0131 455 3412
-  napier.ac.uk/exchanges

ROSKILDE UNIVERSITY (RUC)

International Education & Mobility

Universitetsvej 2
Building 30B.1
4000 Roskilde
Denmark

-  incoming-exchange@ruc.dk
 -  +45 4674 2244
- 

STUDENT EXPERIENCES

“**RUC** is relaxed
but also
academic”
and **professional.**”



Student Feedback



Photos from students



All images sourced from the university's official website and social media accounts, except where noted otherwise.

Notice something that we need to fix or update? Please email us studyabroad@napier.ac.uk