



SCHOOL OF ENGINEERING & COMPUTER SCIENCE IN PARIS



CREATE THE DIGITAL WORLD

TRAINING THE NEXT GENERATION OF DIGITAL ENGINEERS

OUR VISION

- To build a worldwide reputation for excellence
- To ensure that all students have a multicultural experience
- To create an environment for international collaboration
- To develop human potential with scientific, managerial and technical skills
- To become a premier engineering school known for our excellent academics

OUR MISSION

EPITA's mission is to be a world-class school through education, knowledge and innovation.

As part of the IONIS EDUCATION GROUP, our vocation is to shape the new business intelligence and train today's and tomorrow's engineers.

OUR VALUES

- Excellence
- Partnership and collaboration
- Ethics, honesty and respect
 - Diversity
- Continuous improvement



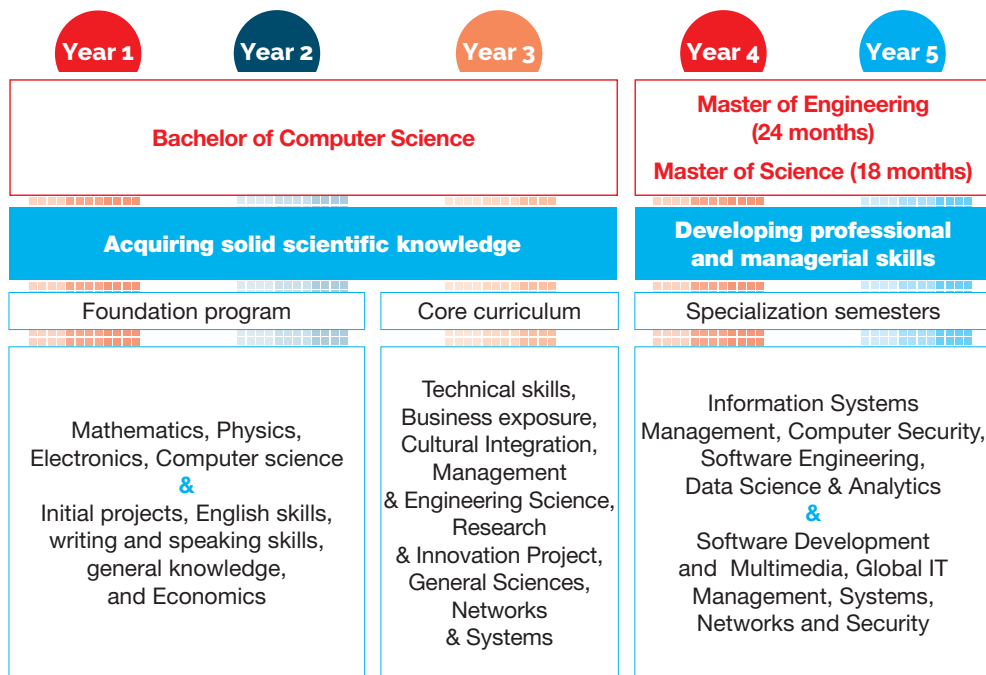
Created in 1984, EPITA, École Pour l'Informatique et les Techniques Avancées, is a bilingual (French-English) **computer science and software engineering school**, located in suburban Paris, France. Using an innovative curriculum, EPITA trains top-notch information technology professionals; students leave EPITA with a solid scientific knowledge base and cutting-edge IT and digital engineering skills.

EPITA offers a wide range of **programs taught in English**; each year we welcome several hundred international students to our campus in suburban Paris.

Globalization and technological innovation are the hallmarks of the 21st century: EPITA's students enter the workforce prepared to deal with these incredible challenges, risks and opportunities.

The digital revolution is now, and EPITA is training the digital engineers who will lead it.

A FIVE-YEAR PROGRAM TO BUILD YOUR DIGITAL ENGINEERING CAREER



OTHER PROGRAMS AT A GLANCE

SHORT PROGRAMS

For a short but significant and rewarding experience in Paris, EPITA offers 3 week short programs in computer science and in French Language and Culture.



FRENCH LANGUAGE CENTER



In 2015, EPITA opened an extremely dynamic and innovative French Language Center with top-notch instruction, support, and guidance for our students who are not native French speakers. EPITA's French courses are based on the Common European Framework of Reference for Languages' recommendations (CEFR).

EPITA's French Language Center is open to all students during the academic year and in the summer.

LIFELONG LEARNING

EPITA created the SECURESPHERE executive education center to meet businesses' cybersecurity needs. The center offers professional development for employees, managers, directors, and businesses.



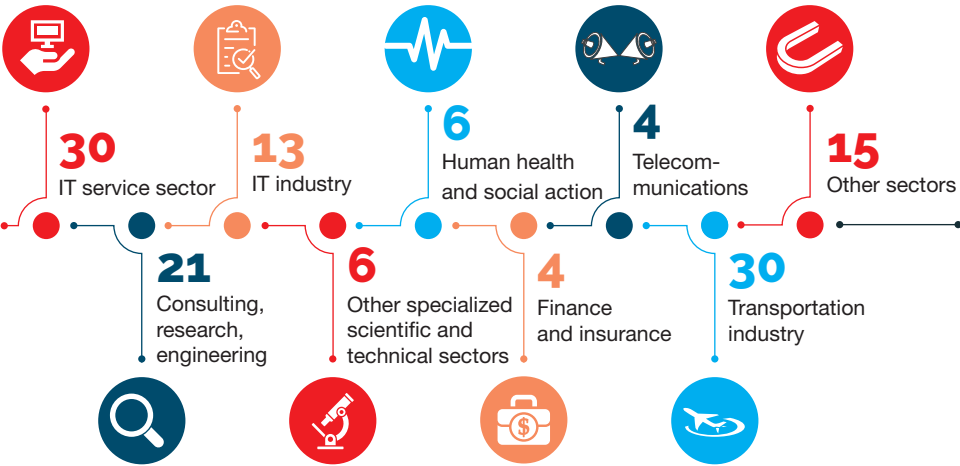
RESEARCH AT EPITA

EPITA houses numerous research and innovation teams; our students are actively involved in our professors' cutting-edge research projects.

Artificial intelligence	Automatons	Cyber security	Entrepreneurship
Robotics exploration & embedded system	Digital image processing	Virtual reality & augmented reality	Digital transformation & new usages

SECTORS AND INDUSTRIES IN WHICH OUR 2017 GRADUATES WORK :

(Figures in %)



CORPORATE EVENTS

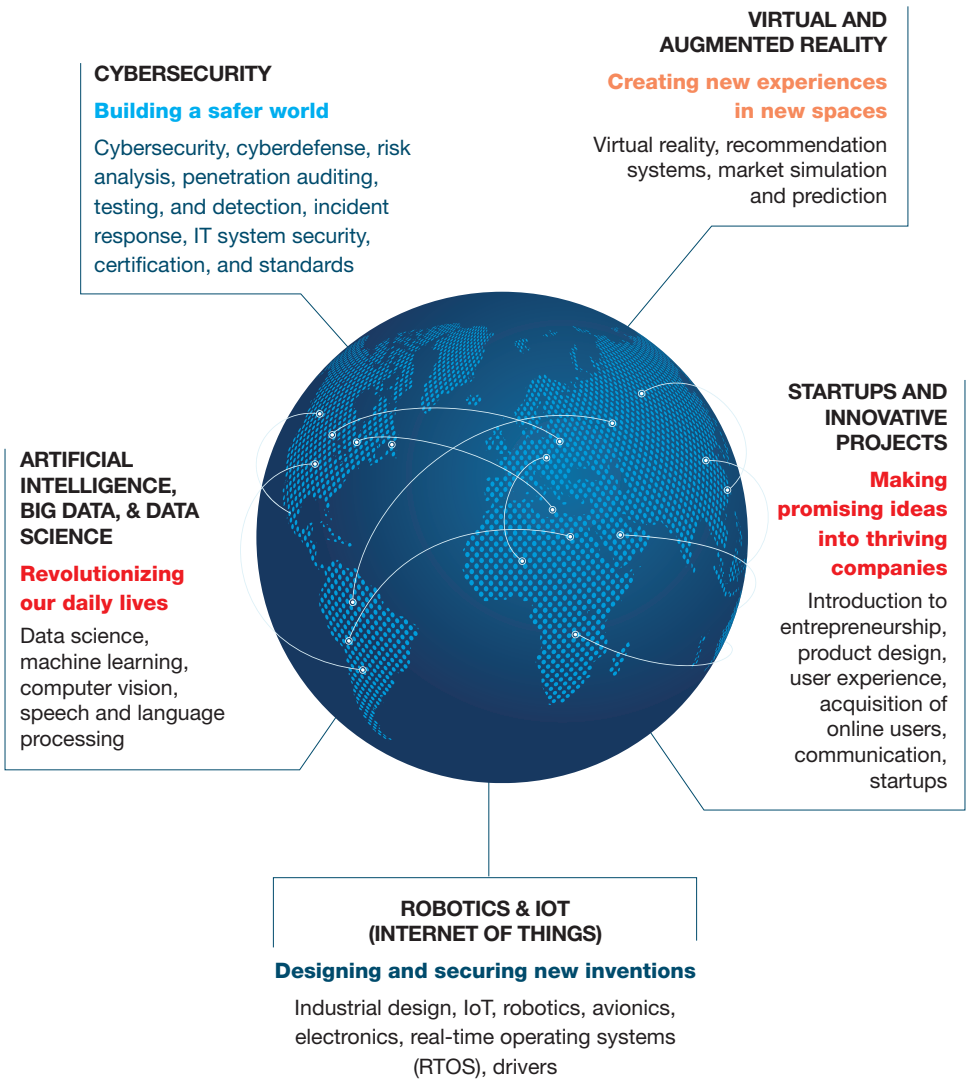


What I learned at EPITA is very practical and hands-on knowledge; all the subjects are connected and related to computer science. The knowledge I learned at EPITA in a very short period of time is going to help me a lot in the future. I really enjoyed my time at EPITA !



Rakhmatullo Rashidov, Sejong University South Korea

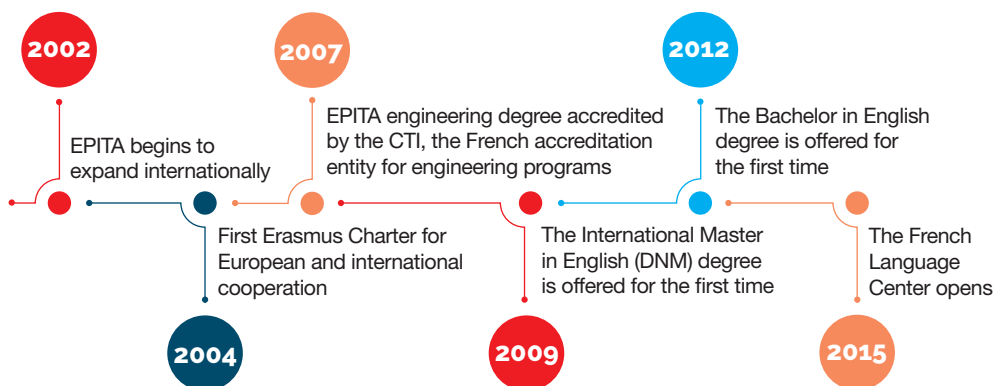
EPITA: MEETING THE CHALLENGES OF TOMORROW...TODAY



The next generation of engineers will disrupt our assumptions and create new possibilities. At EPITA, we train engineers to meet today's challenges while anticipating and preparing for the challenges of tomorrow. We teach our students to think and to create without limits, and without borders; we want our students to be constrained only by their imaginations.



EPITA'S INTERNATIONALIZATION TIMELINE



EPITA IN BRIEF

TRAINING FOR DIGITAL INTELLIGENCE

- 2,500** students
- 6** campuses in France
- 1** French Language Center
- 1** cybersecurity executive education center
- 1** digital StartUpLab
- 2,000** corporation partners
- 6,000** internships and job offers each year
- 7,500** Alumni
- EPITA alumni average starting salary:
 - 42,800** euros in France
 - 66,800** euros internationally

EPITA RANKS AMONG THE TOP ENGINEERING SCHOOLS IN FRANCE

Challenge^s

In 2019, the French business magazine Challenges awarded EPITA four stars, as the best private undergraduate engineering school in France.



In EPITA was ranked as the leading computer engineering school focused completely won the digital sector.



AROUND THE WORLD, IN 2019 EPITA HAD:

- More than **350** international students
- 73** university partners in **33** countries on **6** continents
- 6** dual-degree agreements
- 40** student clubs and associations: Episport, Epitanime, Epiworld, among others

EPITA IS ACCREDITED BY THE FRENCH GOVERNMENT, ENGINEERING DEGREE ACCREDITED BY THE CTI (FRENCH ENGINEERING CREDENTIAL ACCREDITATION COMMITTEE), EPITA HAS THE EUR-ACE LABEL AND IS A MEMBER OF CGE, THE FRENCH GRANDES ECOLES CONFERENCE

14-16 rue Voltaire 94270 Le Kremlin-Bicêtre, France

international@epita.fr



EPITA is a member of **IONIS**