

# **Higher Education in Latvia**

**Study programmes in Latvia offered  
in foreign languages**

**3rd edition**

Riga 2009

## About this publication

This brief guide to studying in Latvia has been compiled by:



AKADĒMISKO  
PROGRAMMU  
AĢENTŪRA

State Agency **Academic Programme Agency** –

a public agency under the supervision of the Ministry of Education and Science. Its main mission is to promote the implementation of European Union education programmes and other national and international education development projects.

Blaumaņa iela 22, Rīga, LV-1011, Latvia

Tel.: +371 67280138

Fax: +371 67280108

E-mail: [apa@apa.lv](mailto:apa@apa.lv)

Website: [www.apa.lv](http://www.apa.lv)



The **Academic Information Centre** is a foundation supervised by Ministry of Education and Science. The centre performs tasks to promote free movement of persons in the fields of education and employment through maintaining the Latvian ENIC-NARIC centre (the Latvian centre for the evaluation of foreign academic credentials).

Valņu iela 2, Rīga, LV 1050, Latvia

Tel.: +371 67225155

Fax: +371 67221006

E-mail: [aic@aic.lv](mailto:aic@aic.lv)

Website: [www.aic.lv](http://www.aic.lv)



**Euroguidance Latvia** –

a part of the European Commission supported Euroguidance Network, hosted in Latvia by the State Education Development Agency. Euroguidance Latvia supports the development of national policy and practice in career guidance and counselling through the provision of quality information to policy makers, guidance practitioners, other stakeholders and individuals

Smilšu iela 8, 3rd floor, Rīga, LV-1050, Latvia

Tel.: +371 67830842

Fax: +371 67830830

E-mail: [kad@viaa.gov.lv](mailto:kad@viaa.gov.lv)

Website: [www.viaa.gov.lv/Euroguidance](http://www.viaa.gov.lv/Euroguidance)

This publication has been produced with the financial support of the European Commission. This publication reflects the views only of the authors, and the Commission cannot be held responsible for any use which may be made of the information contained therein. Co-funding has been provided by the Latvian National budget.

# Content

<b>Introduction — Welcome to Latvia .....</b>	<b>4</b>
<b>Higher education system in Latvia .....</b>	<b>6</b>
<b>List of higher education institutions .....</b>	<b>7</b>
<b>Study programmes in foreign languages</b>	
Rīga Stradiņš University .....	9
Rīga Technical University .....	11
University of Latvia .....	36
BA School of Business and Finance .....	43
Latvian Maritime Academy .....	46
Rēzekne Higher Education Institution .....	51
Rīga Graduate School of Law .....	53
Stockholm School of Economics in Riga .....	59
Ventspils University College .....	61
Vidzeme University of Applied Sciences.....	63
Baltic International Academy .....	64
Graduate School of Information Systems Management .....	68
Latvian Christian Academy .....	73
Rīga International School of Economics and Business Administration .....	76
School of Business administration „Turība” .....	79
Transport and Telecommunication Institute (TTI) .....	81
<b>Useful information resources .....</b>	<b>85</b>
<b>Alphabetical list of study programmes .....</b>	<b>86</b>
<b>List of subject areas .....</b>	<b>88</b>

# Welcome to Latvia

Latvia is a country of rich history and cultural traditions and a relatively new national state. For a thousand years this land in the north-east of Europe was inhabited by the Baltic and Finno-Ugric tribes, but the consolidation of the modern Latvian nation started in the 19th century. That was a period of national awakening that later served also as a precondition for establishment of an independent national state in the 20th century.

Higher education and academic mobility is a national tradition in Latvia. The awareness of a national identity and ambitions for national self-determination came from the first Latvians who were fortunate enough to overcome their peasant background and go to study at universities abroad. The tradition is even stronger today with the existence of 60 state and private colleges, university colleges and universities. Of these 50 have been established since Latvia regained its independence from the Soviet Union in 1990. The number of students attending higher education studies has also steadily increased.

As a part of the Baltic Sea region, Latvia has always been a multi-ethnic country and rich in different cultural and education traditions, and openness and creativity can be attributed to people of the Baltic region in general. Maybe this is why a lot of world famous scholars, architects, engineers, film-makers and artists from different backgrounds – German, Jewish, Russian and Latvian – were born and grew up in Latvia and its capital Riga. Latvia has a distinct place in the intellectual and cultural map of Europe due to its close relationship and contacts with prominent European scholars and artists.

Today Latvia is a member country of the European Union, on its way to welfare and economic growth. Latvia successfully participates in the establishment of a European higher education area. Higher education institutions of Latvia are active members of international cooperation in many different topical study and research fields. Latvia has also started to participate in developing a common Baltic-Nordic education area with the perspective of becoming a part of one of the world's most competitive and developed regions. And, last but not least, Latvia sees its role as a bridge between the East and the West. Altogether, at present Latvia is an active member of numerous challenging and unique projects. Why not experience development as a student in Latvia?



## Geography:

Latvia, one of the three Baltic States and a member of the European Union, is situated in the north-eastern part of Europe, on the east coast of the Baltic Sea, bordering Lithuania, Belarus, Russia and Estonia. The landscape of the country is marked by lowland plains and rolling hills, with thousands of rivers and lakes. Most of the countryside is less than 100 metres above the sea level.

## Capital:

Riga

## Climate:

The weather in Latvia is governed by a moderate oceanic climate and it is quite changeable. Summer (June-August) is usually warm or hot with the average temperature of about +20°C, but time to time it may reach also +30°C and more. In winter (December – February) snowfall is common, and it is rather cold with the average temperature of -5°C, but the temperature may drop to even -25°C or more.

## Population:

The population in Latvia is about 2.3 million. The largest ethnic groups are Latvians (59%), Russians (28%), Byelorussians, Ukrainians, Poles, Lithuanians and Jews.

## Language:

The state language is Latvian, which belongs to the Indo-European family of languages.

## Currency:

The national currency is the Latvian lat (LVL). One lat equals 100 santims.

1 LVL /  $\approx$  1.42 EUR /  $\approx$  2.10 USD

1 EUR  $\approx$  0.70 LVL

1 USD  $\approx$  0.48 LVL

## Academic Calendar

The academic year in most higher educational institutions starts in September, it comprises 40 weeks and is divided into 2 semesters.

### Autumn semester:

lectures: September to Christmas

exams: December / January

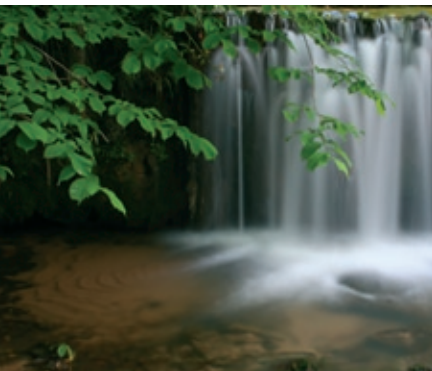
holidays: Christmas time

### Spring semester:

lectures: February to the end of May

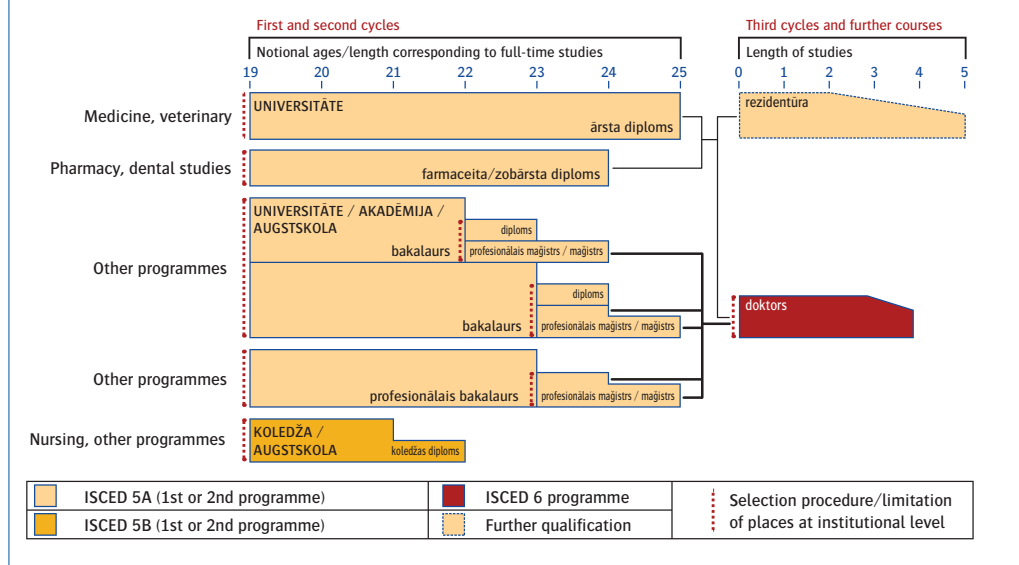
exams: May / June

holidays: July, August



# Higher education system in Latvia

## Higher education structure in Latvia



The Latvian education system is generally structured at 4 levels: pre-school education (ISCED 0), basic education (ISCED 1 and 2), secondary education (general and vocational, ISCED 3), and higher education (ISCED 5 and 6). At pre-school level education of 5-6 year olds is compulsory. Basic education is compulsory, lasting nine years, after which students may choose to continue their studies either in general secondary schools or vocational secondary education institutions. The study period varies according to the type of institution: three years in general secondary school or one to three years in a vocational education institution. After completion of either type of secondary education, students may choose either to enter the labour market or continue their studies at a higher education institution. Graduates of general secondary and vocational secondary schools are eligible for admission to higher education.

Since 2004 all higher education institutions enrol students on the basis of the results of centralised examinations passed at the end of secondary education. However, higher education institutions may still organise one or several additional entrance examinations, aptitude tests or a competition with an emphasis on subjects pertinent to the chosen programme.

Universities and other institutions of higher education mostly run both academic and professional programmes. The following groups of programmes may be distinguished:

- **Academic programmes** leading to academic/scientific degrees:
  - **Bachelor** (academic degree),
  - **Master** (academic degree),
  - **Doctor** (scientific degree).
- **First level professional programmes** ("college programmes") providing a professional qualification, access to the labour market and access to a related professional programme on Bachelor level;
- **Second level professional programmes** providing the so-termed professional Bachelor and Master degree and a professional qualification, making graduates eligible for further academic studies, and, eventually, a Doctoral degree, or only a professional qualification providing access to labour market;
- **Long study programmes** in medicine, pharmacy, dentistry and veterinary medicine.

The Latvian higher education system is part of the Bologna process, and, correspondingly, follows the so-called 3-cycle system, where the 1<sup>st</sup> cycle includes an academic or professional Bachelor degree, the 2<sup>nd</sup> cycle includes an academic or professional Master degree and the 3<sup>rd</sup> cycle includes the Doctoral degree. Academic credits in academic and professional programmes may be transferred in order to adjust one's education path to one's specific needs.

# List of higher education institutions

## Universities

Daugavpils University

[www.dau.lv](http://www.dau.lv)

Latvia University of Agriculture

[www.llu.lv](http://www.llu.lv)

Liepāja University

[www.lieppa.lv](http://www.lieppa.lv)

**Rīga Stradiņš University (9)\***

[www.rsu.lv](http://www.rsu.lv)

**Rīga Technical University (11)**

[www.rtu.lv](http://www.rtu.lv)

**University of Latvia (36)**

[www.lu.lv](http://www.lu.lv)

## Public institutions of higher education

Art Academy of Latvia

[www.lma.lv](http://www.lma.lv)

**BA School of Business and Finance (43)**

[www.ba.lv](http://www.ba.lv)

Jāzeps Vītols Latvian Academy of Music

[www.music.lv/Academy](http://www.music.lv/Academy)

Latvian Academy of Culture

[www.lka.edu.lv](http://www.lka.edu.lv)

Latvian Academy of Sports Education

[www.lspa.lv](http://www.lspa.lv)

**Latvian Maritime Academy (46)**

[www.latja.lv](http://www.latja.lv)

National Defence Academy of Latvia

[www.naa.mil.lv](http://www.naa.mil.lv)

Police Academy of Latvia

[www.polak.edu.lv](http://www.polak.edu.lv)

**Rēzekne Higher Education Institution (51)**

[www.ru.lv](http://www.ru.lv)

**Rīga Graduate School of Law (53)**

[www.rgsl.edu.lv](http://www.rgsl.edu.lv)

**Stockholm School of Economics in Riga (59)**

[www.sseriga.edu.lv](http://www.sseriga.edu.lv)

Rīga Teacher Training and Educational Management Academy

[www.rpiva.lv](http://www.rpiva.lv)

**Ventspils University College (61)**

[www.venta.lv](http://www.venta.lv)

**Vidzeme University of Applied Sciences (63)**

[www.va.lv](http://www.va.lv)

## Higher education institutions established by legal bodies

**Baltic International Academy (64)**

[www.bki.lv](http://www.bki.lv)

Higher School of Economics and Culture

[www.eka.edu.lv](http://www.eka.edu.lv)

Higher School of Psychology

[www.psy.lv](http://www.psy.lv)

Higher School of Social Work and Social Pedagogics „Attīstība”

[www.attistiba.lv](http://www.attistiba.lv)

**Graduate School of Information Systems Management (68)**

[www.isma.lv](http://www.isma.lv)

International Higher School of Practical Psychology

[www.sppa.lv](http://www.sppa.lv)

**Latvian Christian Academy (73)**

[www.kra.lv](http://www.kra.lv)

Rīga Aeronautical Institute

[www.rai.lv](http://www.rai.lv)

**Rīga International School of Economics and Business Administration (76)**

[www.rsebaa.lv](http://www.rsebaa.lv)

**School of Business Administration „Turība” (79)**

[www.turiba.lv](http://www.turiba.lv)

Higher School of Social Technologies

[www.sta-edu.lv](http://www.sta-edu.lv)

**Transport and Telecommunication Institute (81)**

[www.tsi.lv](http://www.tsi.lv)

---

\* **Bold and underlined** are the institutions whose offered study programmes in foreign languages are included in this brochure. The number in brackets shows the page where to find the study programmes of the relevant institution.

## State colleges

College „Koledža RRC”	<a href="http://www.siva.gov.lv">www.siva.gov.lv</a>
Daugavpils Medical College	<a href="http://www.medkol.lv">www.medkol.lv</a>
Fire and Civil Protection College	<a href="http://www.112.lv/ucak">www.112.lv/ucak</a>
Jēkabpils Agrobusiness College	<a href="http://www.jak.lv">www.jak.lv</a>
Latvia Culture College	<a href="http://www.kulturaskoledza.lv">www.kulturaskoledza.lv</a>
Liepāja Medical College	<a href="http://www.lmk.edu.lv">www.lmk.edu.lv</a>
Liepāja Naval College	<a href="http://www.ljk.lv">www.ljk.lv</a>
Malnava College	<a href="http://www.malna.lv">www.malna.lv</a>
Olaine Mechanics and Technology College	<a href="http://www.omtk.lv">www.omtk.lv</a>
Pauls Stradiņš Health and Social Care College	<a href="http://www.psk.lv">www.psk.lv</a>
Public Border Guarding College	<a href="http://www.vrk.rs.gov.lv">www.vrk.rs.gov.lv</a>
Red Cross Medical College	<a href="http://www.redcrossmedicalcollege.lv">www.redcrossmedicalcollege.lv</a>
Riga 1st Medicine College	<a href="http://www.rmkl.lv">www.rmkl.lv</a>
Riga Business College	<a href="http://www.ruk.lv">www.ruk.lv</a>
Riga Civil Engineering College	<a href="http://www.rck.lv">www.rck.lv</a>
Riga Medical College	<a href="http://www.rmkoledza.lv">www.rmkoledza.lv</a>
Riga Technical College	<a href="http://www.rtk.lv">www.rtk.lv</a>
State Police College	<a href="http://www.policijas.skola.gov.lv">www.policijas.skola.gov.lv</a>

## Colleges established by legal bodies

Alberts College	<a href="http://www.alberta-koledza.lv">www.alberta-koledza.lv</a>
College of Business Administration	<a href="http://www.bvk.lv">www.bvk.lv</a>
Career Growth College	<a href="http://www.kik-info.lv">www.kik-info.lv</a>
Christian Management College	<a href="http://www.kvk.lv">www.kvk.lv</a>
College of Accounting and Finance	<a href="http://www.koledza.lv">www.koledza.lv</a>
Cosmetology College	<a href="http://www.kosmetologijaskoledza.lv">www.kosmetologijaskoledza.lv</a>
College of Law	<a href="http://www.juridiskakoledza.apollo.lv">www.juridiskakoledza.apollo.lv</a>
Latvian Business College	<a href="http://www.biznesakoledza.lv">www.biznesakoledza.lv</a>





## Faculty of Medicine

### Medicine

<b>Type:</b>	Complete study programme
<b>Degree to be obtained:</b>	MD (Medical Doctor)
<b>Length:</b>	6 years (12 semesters)
<b>Language:</b>	English
<b>Short description of the programme:</b>	<p>Undergraduate programme in Medicine leading to Medical Doctor`s degree.  Programme is divided into 3 blocs:  1<sup>st</sup> – 2<sup>nd</sup> study year: acquirement of fundamental theoretical disciplines of medicine  3<sup>rd</sup> year: phase of acquirement of medical disciplines related to pathological conditions and processes  4<sup>th</sup> – 6<sup>th</sup> study year: clinical medicine phase  Main subjects: Anatomy, Histology, Embryology, Physiology, Biochemistry, Pat-physiology, Pat-anatomy, Radiology, Pharmacology, Internal Medicine, Internal Diseases etc.</p>
<b>Fee per year:</b>	7000 EUR / 4920 LVL / 10271 USD
<b>Requirements:</b>	<p>Minimum age – 18. Maximum age is not limited. All international applicants are expected to have completed their secondary education including 2 semesters or three quarters of the following subjects: Biology, Chemistry, Physics and must possess university eligibility in their own country.</p> <p>Certificate of English language proficiency is required.</p>
<b>Accommodation possibilities and costs:</b>	Renting private apartments starting from 400 EUR / 281 LVL / 587 USD per month.
<b>Contact information:</b>	<p><b>Rīga Stradiņš University</b>  Dzirčiema iela 16, Rīga, LV-1007, Latvia  Contact person – <b>Smuidra Žermanos</b> (Dean of International study department)  Tel.: +371 67409128  E-mail: foreign@rsu.lv</p>
<b>Website:</b>	<a href="http://www.rsu.lv">www.rsu.lv</a>

## Faculty of Stomatology

### Stomatology



<b>Type:</b>	Complete study programme
<b>Degree to be obtained:</b>	DDS (Doctor of Dental Surgery)
<b>Length:</b>	5 years (10 semesters)
<b>Language:</b>	English
<b>Short description of the programme:</b>	<p>Undergraduate programme in Stomatology leading to Doctor of Dental Surgery.</p> <p>1<sup>st</sup> year: acquirement of fundamental and medical disciplines</p> <p>2<sup>nd</sup> – 3<sup>rd</sup> year: preclinical and para-clinical sciences</p> <p>4<sup>th</sup> – 5<sup>th</sup>: clinical work with patients</p> <p>The clinical base of specific disciplines in stomatology are provided by the Institute of Stomatology in Riga which is a high quality centre well known in Europe.</p>
<b>Fee per year:</b>	10 000 EUR / 7028 LVL / 14672 USD
<b>Requirements:</b>	<p>Minimum age – 18. All international applicants are expected to have completed their secondary education including 2 semesters or three quarters of the following subjects: Biology, Chemistry, Physics and must be eligible for higher education studies in their own country.</p> <p>Certificate of English language proficiency is required.</p>
<b>Accommodation possibilities and costs:</b>	Renting private apartments starting from 400 EUR / 281 LVL / 587 USD per month.
<b>Contact information:</b>	<p><b>Rīga Stradiņš University</b></p> <p>Dzirčiema iela 16, Rīga, LV-1007, Latvia</p> <p>Contact person – <b>Smuidra Žermanos</b> (Dean of International study department)</p> <p>Tel.: +371 67409128</p> <p>E-mail: <a href="mailto:foreign@rsu.lv">foreign@rsu.lv</a></p>
<b>Website:</b>	<a href="http://www.rsu.lv">www.rsu.lv</a>

## Faculty of Computer Science and Information Technology

### Computer Systems



<b>Type:</b>	Complete study programme
<b>Degree to be obtained:</b>	Bachelor
<b>Length:</b>	Full-time studies – 3 years (6 terms)
<b>Language:</b>	English
<b>Short description of the programme:</b>	There is a great demand for technical experts with the ability to create innovative computer systems and for highly trained professionals to manage these systems. The three-year programme is designed to provide a strong understanding in troubleshooting procedures and practical knowledge in implementing various advanced computer systems technologies. It focuses on technical aspects of advanced networking technologies, administration and support components. Courses ranging from Fundamentals of Computer Graphics and Image Processing to courses in Computer Architecture, Systems Engineering, Software Engineering, Object-Oriented Systems Analysis and Design etc.
<b>Fee per year:</b>	3515 USD
<b>Requirements:</b>	<ul style="list-style-type: none"> <li>• General Certificate of Secondary Education</li> <li>• Entrance examination in Mathematics</li> <li>• Proficiency in the English language</li> </ul>
<b>Accommodation possibilities and costs:</b>	<p>RTU dormitory</p> <ul style="list-style-type: none"> <li>• 85 EUR / 60 LVL / 125 USD per person in a shared room per month (2 persons sharing)</li> <li>• 230 EUR / 162 LVL / 353 USD in a single room per month at the RTU guest house</li> </ul> <p>For additional information, please contact the Foreign Students Department</p>
<b>Contact information:</b>	<p><b>Riga Technical University</b>  Foreign Students Department  Kaļķu iela 1, room 318, Rīga, Latvia  Contact person – <b>Igors Tipans</b> (Director)  Tel.: +371 67089013  Mob.: +371 29495699  E-mail: igors@latnet.lv</p>
<b>Website:</b>	<a href="http://www.rtuasd.lv">www.rtuasd.lv</a>

## Computer Systems

<b>Type:</b>	Complete study programme
<b>Degree to be obtained:</b>	Master
<b>Length:</b>	Full-time studies – 2 years (4 terms)
<b>Language:</b>	English
<b>Short description of the programme:</b>	Computer Systems Engineering is the fastest-growing branch of engineering. The Master programme of Engineering Science in Computer Systems provides an opportunity to demonstrate comprehensive knowledge in computer systems and the tools necessary for the success of professional engineers. This programme is designed to equip students with the theory, skills and techniques required to realise and design computer systems. Upon completion of this programme students will be well positioned to succeed in design and implementation of computer systems, integration of computers into larger systems and application of different solutions to engineering problems. For more information, or to apply to the programme, see the website.
<b>Fee per year:</b>	3515 USD
<b>Requirements:</b>	<ul style="list-style-type: none"> <li>• Bachelor's degree or its equivalent (official transcripts required)</li> <li>• Proficiency in the English language</li> </ul>
<b>Accommodation possibilities and costs:</b>	<p>RTU dormitory</p> <ul style="list-style-type: none"> <li>• 85 EUR / 60 LVL / 125 USD per person in a shared room per month (2 persons sharing)</li> <li>• 230 EUR / 162 LVL / 353 USD in a single room per month at the RTU guest house</li> </ul> <p>For additional information, please contact the Foreign Students Department</p>
<b>Contact information:</b>	<p><b>Riga Technical University</b>  Foreign Students Department  Kaļķu iela 1, room 318, Riga, Latvia  Contact person – <b>Igors Tipans</b> (Director)  Tel.: +371 67089013  Mob.: +371 29495699  E-mail: igors@latnet.lv</p>
<b>Website:</b>	<a href="http://www.rtuasd.lv">www.rtuasd.lv</a>

## Computer Systems

<b>Type:</b>	Complete study programme
<b>Degree to be obtained:</b>	Doctor
<b>Length:</b>	Full-time studies – 3 years (6 terms) Part-time studies – 4 years
<b>Language:</b>	English
<b>Short description of the programme:</b>	<p>A Doctoral degree is grounding for any research career. RTU has leading positions in Latvia participating in large EU funded projects. For the last three years the RTU research labs have received millions of EUR to renovate scientific research equipment and infrastructure. If you have a strong personal interest in the subject of your research, a strong sense of achievement and self-confidence or desire to pursue your career then it is time to apply. Experience in research work has a real value in the education system and in global society itself.</p> <p>For more information concerning the subject of your research or any possible assistance, or to apply to the programme, see the website or contact the department.</p>
<b>Fee per year:</b>	4480 USD (full-time)
<b>Requirements:</b>	<ul style="list-style-type: none"> <li>• Master's degree in the corresponding field</li> <li>• Proficiency in the English language</li> </ul>
<b>Accommodation possibilities and costs:</b>	<p>RTU dormitory</p> <ul style="list-style-type: none"> <li>• 85 EUR / 60 LVL / 125 USD per person in a shared room per month (2 persons sharing)</li> <li>• 230 EUR / 162 LVL / 353 USD in a single room per month at the RTU guest house</li> </ul> <p>For additional information, please contact the Foreign Students Department</p>
<b>Contact information:</b>	<p><b>Riga Technical University</b>  Foreign Students Department  Kaļķu iela 1, room 318, Riga, Latvia  Contact person – <b>Igors Tipans</b> (Director)  Tel.: +371 67089013  Mob.: +371 29495699  E-mail: igors@latnet.lv</p>
<b>Website:</b>	www.rtuasd.lv

## Mathematical Modelling

<b>Type:</b>	Complete study programme
<b>Degree to be obtained:</b>	Doctor
<b>Length:</b>	Full-time studies – 3 years (6 terms) Part-time studies – 4 years
<b>Language:</b>	English
<b>Short description of the programme:</b>	<p>A Doctoral degree is grounding for any research career. RTU has leading positions in Latvia participating in large EU funded projects. For the last three years the RTU research labs have received millions of EUR to renovate scientific research equipment and infrastructure. If you have a strong personal interest in the subject of your research, a strong sense of achievement and self-confidence or desire to pursue your career then it is time to apply. Experience in research work has a real value in the education system and in global society itself.</p> <p>For more information concerning the subject of your research or any possible assistance, or to apply to the programme, see the website or contact the department.</p>
<b>Fee per year:</b>	4480 USD (full-time)
<b>Requirements:</b>	<ul style="list-style-type: none"> <li>• Master's degree in the corresponding field</li> <li>• Proficiency in the English language</li> </ul>
<b>Accommodation possibilities and costs:</b>	<p>RTU dormitory</p> <ul style="list-style-type: none"> <li>• 85 EUR / 60 LVL / 125 USD per person in a shared room per month (2 persons sharing)</li> <li>• 230 EUR / 162 LVL / 353 USD in a single room per month at the RTU guest house</li> </ul> <p>For additional information, please contact the Foreign Students Department</p>
<b>Contact information:</b>	<p><b>Riga Technical University</b>  Foreign Students Department  Kaļķu iela 1, room 318, Riga, Latvia  Contact person – <b>Igors Tipans</b> (Director)  Tel.: +371 67089013  Mob.: +371 29495699  E-mail: igors@latnet.lv</p>
<b>Website:</b>	www.rtuasd.lv



## Faculty of Civil Engineering

### Geodesy and Cartography

<b>Type:</b>	Complete study programme
<b>Degree to be obtained:</b>	Bachelor
<b>Length:</b>	Full-time studies – 3 years (6 terms)
<b>Language:</b>	English
<b>Short description of the programme:</b>	<p>The study programme Geodesy and Cartography is aimed at developing and implementing theoretical and practical knowledge and skills in geodesy, cartography and related sciences. It provides good understanding of the principles underlying current and imminent technology in geodesy and cartography. Courses of the programme ranging from compulsory subjects, e.g. Mathematics, Physics, Computer Graphics, Advanced Geodesy, Engineering Geodesy, Cartography, Photogrammetry, etc. to limited choice and free choice subjects, e.g. Geodetical Gravimetry, Legislation and Laws in Geodesy, Systems of Property Evaluation, etc. are available. Students may also take courses in humanities and social sciences. For more information, or to apply to the programme, see the website.</p>
<b>Fee per year:</b>	3515 USD
<b>Requirements:</b>	<ul style="list-style-type: none"><li>• General Certificate of Secondary Education</li><li>• Entrance examination in Mathematics</li><li>• Proficiency in the English language</li></ul>
<b>Accommodation possibilities and costs:</b>	<p>RTU dormitory</p> <ul style="list-style-type: none"><li>• 85 EUR / 60 LVL / 125 USD per person in a shared room per month (2 persons sharing)</li><li>• 230 EUR / 162 LVL / 353 USD in a single room per month at the RTU guest house</li></ul> <p>For additional information, please contact the Foreign Students Department</p>
<b>Contact information:</b>	<p><b>Riga Technical University</b> Foreign Students Department Kaļķu iela 1, room 318, Riga, Latvia Contact person – <b>Igors Tipans</b> (Director) Tel.: +371 67089013 Mob.: +371 29495699 E-mail: igors@latnet.lv</p>
<b>Website:</b>	<a href="http://www.rtuasd.lv">www.rtuasd.lv</a>

## Geodesy and Cartography

<b>Type:</b>	Complete study programme
<b>Degree to be obtained:</b>	Master
<b>Length:</b>	Full-time studies – 2 years (4 terms)
<b>Language:</b>	English
<b>Short description of the programme:</b>	The Master degree of Engineering in Geodesy, Cartography and Property Valuation is intended for those students who wish to study geodesy and cartography at advanced level without the necessity of being engaged deeply in research. Candidates should have a bachelor's degree in Geodesy and Cartography, or a related field from recognized university. The programme covers Fundamentals of Geodetic Data Processing, Geographical Information Systems, Digital Terrain Models, Fundamentals of Regional Planning and other subjects necessary for qualified specialists. For more information, or to apply to the programme, see the website.
<b>Fee per year:</b>	3515 USD
<b>Requirements:</b>	<ul style="list-style-type: none"> <li>• Bachelor's degree or its equivalent (official transcripts required)</li> <li>• Proficiency in the English language</li> </ul>
<b>Accommodation possibilities and costs:</b>	<p>RTU dormitory</p> <ul style="list-style-type: none"> <li>• 85 EUR / 60 LVL / 125 USD per person in a shared room per month (2 persons sharing)</li> <li>• 230 EUR / 162 LVL / 353 USD in a single room per month at the RTU guest house</li> </ul> <p>For additional information, please contact the Foreign Students Department</p>
<b>Contact information:</b>	<p><b>Riga Technical University</b>  Foreign Students Department  Kaļķu iela 1, room 318, Riga, Latvia  Contact person – <b>Igors Tipans</b> (Director)  Tel.: +371 67089013  Mob.: +371 29495699  E-mail: igors@latnet.lv</p>
<b>Website:</b>	<a href="http://www.rtuasd.lv">www.rtuasd.lv</a>



## Civil Engineering, Mechanics

<b>Type:</b>	Complete study programme
<b>Degree to be obtained:</b>	Doctor
<b>Length:</b>	Full-time studies – 3 years (6 terms) Part-time studies – 4 years
<b>Language:</b>	English
<b>Short description of the programme:</b>	<p>A Doctoral degree is grounding for any research career. RTU has leading positions in Latvia participating in large EU funded projects. For the last three years the RTU research labs have received millions of EUR to renovate scientific research equipment and infrastructure. If you have a strong personal interest in the subject of your research, a strong sense of achievement and self-confidence or desire to pursue your career then it is time to apply. Experience in research work has a real value in the education system and in global society itself.</p> <p>For more information concerning the subject of your research or any possible assistance, or to apply to the programme, see the website or contact the department.</p>
<b>Fee per year:</b>	4480 USD (full-time)
<b>Requirements:</b>	<ul style="list-style-type: none"> <li>• Master's degree in the corresponding field</li> <li>• Proficiency in the English language</li> </ul>
<b>Accommodation possibilities and costs:</b>	<p>RTU dormitory</p> <ul style="list-style-type: none"> <li>• 85 EUR / 60 LVL / 125 USD per person in a shared room per month (2 persons sharing)</li> <li>• 230 EUR / 162 LVL / 353 USD in a single room per month at the RTU guest house</li> </ul> <p>For additional information, please contact the Foreign Students Department</p>
<b>Contact information:</b>	<p><b>Riga Technical University</b>  Foreign Students Department  Kaļķu iela 1, room 318, Rīga, Latvia  Contact person – <b>Igors Tipans</b> (Director)  Tel.: +371 67089013  Mob.: +371 29495699  E-mail: igors@latnet.lv</p>
<b>Website:</b>	www.rtuasd.lv



## Faculty of Power and Electrical Engineering

### Computerised Control of Electrical Technologies

<b>Type:</b>	Complete study programme
<b>Degree to be obtained:</b>	Master
<b>Length:</b>	Full-time studies – 2 years (4 terms)
<b>Language:</b>	English
<b>Short description of the programme:</b>	<p>This programme of the Master degree of Engineering in Electrical Engineering is offered for those who desire to improve specialized knowledge and skills relative to computer control of electrical technologies. This programme will provide you with technically oriented education that highlights the application of modern technologies to solve problems, design, to develop and improve processes, procedures, equipment and facilities. The programme comprises Elements of Automation, Simulation of Electrical Processes, Design of Power Electronics Systems, Industrial Programmable Control Systems, etc. For more information, or to apply to the programme, see the website.</p>
<b>Fee per year:</b>	3515 USD
<b>Requirements:</b>	<ul style="list-style-type: none"><li>• Bachelor's degree or its equivalent (official transcripts required)</li><li>• Proficiency in the English language</li></ul>
<b>Accommodation possibilities and costs:</b>	<p>RTU dormitory</p> <ul style="list-style-type: none"><li>• 85 EUR / 60 LVL / 125 USD per person in a shared room per month (2 persons sharing)</li><li>• 230 EUR / 162 LVL / 353 USD in a single room per month at the RTU guest house</li></ul> <p>For additional information, please contact the Foreign Students Department</p>
<b>Contact information:</b>	<p><b>Riga Technical University</b> Foreign Students Department Kaļķu iela 1, room 318, Riga, Latvia Contact person – <b>Igors Tipans</b> (Director) Tel.: +371 67089013 Mob.: +371 29495699 E-mail: igors@latnet.lv</p>
<b>Website:</b>	<a href="http://www.rtuasd.lv">www.rtuasd.lv</a>

## Environmental Sciences

<b>Type:</b>	Complete study programme
<b>Degree to be obtained:</b>	Master
<b>Length:</b>	Full-time studies – 2 years (4 terms)
<b>Language:</b>	English
<b>Short description of the programme:</b>	The programme Environmental Sciences provides support to develop and test new technologies across the range of activities in the field of Environmental Engineering. The programme emphasizes engineering principles underlining energy technology, environmental management and policy, energy conversion and efficiency, modelling of thermal systems and processes, ecological aspects of energy technology, etc. The programme contains a core sequence of compulsory courses and a choice of disciplinary specialisations. For more information, or to apply to the programme, see the website.
<b>Fee per year:</b>	3515 USD
<b>Requirements:</b>	<ul style="list-style-type: none"> <li>• Bachelor's degree or its equivalent (official transcripts required)</li> <li>• Proficiency in the English language</li> </ul>
<b>Accommodation possibilities and costs:</b>	RTU dormitory <ul style="list-style-type: none"> <li>• 85 EUR / 60 LVL / 125 USD per person in a shared room per month (2 persons sharing)</li> <li>• 230 EUR / 162 LVL / 353 USD in a single room per month at the RTU guest house</li> </ul> For additional information, please contact the Foreign Students Department
<b>Contact information:</b>	<b>Riga Technical University</b> Foreign Students Department Kaļķu iela 1, room 318, Riga, Latvia Contact person – <b>Igors Tipans</b> (Director) Tel.: +371 67089013 Mob.: +371 29495699 E-mail: igors@latnet.lv
<b>Website:</b>	<a href="http://www.rtuasd.lv">www.rtuasd.lv</a>

## Environmental Sciences

<b>Type:</b>	Complete study programme
<b>Degree to be obtained:</b>	Doctor
<b>Length:</b>	Full-time studies – 3 years (6 terms) Part-time studies – 4 years
<b>Language:</b>	English
<b>Short description of the programme:</b>	<p>A Doctoral degree is grounding for any research career. RTU has leading positions in Latvia participating in large EU funded projects. For the last three years the RTU research labs have received millions of EUR to renovate scientific research equipment and infrastructure. If you have a strong personal interest in the subject of your research, a strong sense of achievement and self-confidence or desire to pursue your career then it is time to apply. Experience in research work has a real value in the education system and in global society itself.</p> <p>For more information concerning the subject of your research or any possible assistance, or to apply to the programme, see the website or contact the department.</p>
<b>Fee per year:</b>	4480 USD (full-time)
<b>Requirements:</b>	<ul style="list-style-type: none"> <li>• Master's degree in the corresponding field</li> <li>• Proficiency in the English language</li> </ul>
<b>Accommodation possibilities and costs:</b>	<p>RTU dormitory</p> <ul style="list-style-type: none"> <li>• 85 EUR / 60 LVL / 125 USD per person in a shared room per month (2 persons sharing)</li> <li>• 230 EUR / 162 LVL / 353 USD in a single room per month at the RTU guest house</li> </ul> <p>For additional information, please contact the Foreign Students Department</p>
<b>Contact information:</b>	<p><b>Riga Technical University</b>  Foreign Students Department  Kaļķu iela 1, room 318, Riga, Latvia  Contact person – <b>Igors Tipans</b> (Director)  Tel.: +371 67089013  Mob.: +371 29495699  E-mail: igors@latnet.lv</p>
<b>Website:</b>	<a href="http://www.rtuasd.lv">www.rtuasd.lv</a>



## Faculty of Electronics and Telecommunications

### Telecommunications

<b>Type:</b>	Complete study programme
<b>Degree to be obtained:</b>	Bachelor
<b>Length:</b>	Full-time studies – 3 years (6 terms)
<b>Language:</b>	English
<b>Short description of the programme:</b>	Telecommunications is one of the fastest growing industries worldwide. The growth is mainly based on the rapid development of new technologies, the increasing demands and expectations of customers, and workers whose leadership abilities do not match their technical competence. RTU Faculty of Electronics and Telecommunications offers a three-year engineering study programme, which prepares highly skilled specialists of the new information based economy. The programme involves fundamental concepts of Circuit Theory, Signal Theory, Transmission Systems, Transmission Media, Digital Devices, etc. Students in the programme will use a wide variety of basic and highly specialized test and measurement equipment. For more information, or to apply to the programme, see the website.
<b>Fee per year:</b>	3515 USD
<b>Requirements:</b>	<ul style="list-style-type: none"> <li>• General Certificate of Secondary Education</li> <li>• Entrance examination in Mathematics</li> <li>• Proficiency in the English language</li> </ul>
<b>Accommodation possibilities and costs:</b>	RTU dormitory <ul style="list-style-type: none"> <li>• 85 EUR / 60 LVL / 125 USD per person in a shared room per month (2 persons sharing)</li> <li>• 230 EUR / 162 LVL / 353 USD in a single room per month at the RTU guest house</li> </ul> For additional information, please contact the Foreign Students Department
<b>Contact information:</b>	<b>Riga Technical University</b> Foreign Students Department Kalkū iela 1, room 318, Riga, Latvia Contact person – <b>Igors Tipans</b> (Director) Tel.: +371 67089013 Mob.: +371 29495699 E-mail: igors@latnet.lv
<b>Website:</b>	<a href="http://www.rtuasd.lv">www.rtuasd.lv</a>

## Telecommunications

<b>Type:</b>	Complete study programme
<b>Degree to be obtained:</b>	Master
<b>Length:</b>	Full-time studies – 2 years (4 terms)
<b>Language:</b>	English
<b>Short description of the programme:</b>	Rapid changes in telecommunications technology provide specialists in telecommunication with many new opportunities and challenges. These changes in technology have created a great demand for professionals in the related areas. The Master of Science in Electronics offers excellent career opportunities and helps develop a set of core skills. Teaching laboratories provide extensive computer supported facilities for practical work. These laboratories are used at all stages of the programme to support the lecture and tutorial programme, and to provide modern resources for projects and for thesis work. For more information, or to apply to the programme, see the website.
<b>Fee per year:</b>	3515 USD
<b>Requirements:</b>	<ul style="list-style-type: none"> <li>• Bachelor's degree or its equivalent (official transcripts required)</li> <li>• Proficiency in the English language</li> </ul>
<b>Accommodation possibilities and costs:</b>	RTU dormitory <ul style="list-style-type: none"> <li>• 85 EUR / 60 LVL / 125 USD per person in a shared room per month (2 persons sharing)</li> <li>• 230 EUR / 162 LVL / 353 USD in a single room per month at the RTU guest house</li> </ul> For additional information, please contact the Foreign Students Department
<b>Contact information:</b>	<b>Riga Technical University</b> Foreign Students Department Kaļķu iela 1, room 318, Riga, Latvia Contact person – <b>Igors Tipans</b> (Director) Tel.: +371 67089013 Mob.: +371 29495699 E-mail: igors@latnet.lv
<b>Website:</b>	www.rtuasd.lv



## Faculty of Transport and Mechanical Engineering

### Engineering Technology, Mechanics and Mechanical Engineering

<b>Type:</b>	Complete study programme
<b>Degree to be obtained:</b>	Bachelor
<b>Length:</b>	Full-time studies – 3 years (6 terms)
<b>Language:</b>	English
<b>Short description of the programme:</b>	<p>The Bachelor of Engineering Sciences in Mechanical Engineering degree provides students with an extensive preparation in engineering design and analysis. The programme covers a vast variety of engineering disciplines e.g. compulsory courses include Structures and Properties of Engineering Materials, Supplementary Mathematics in Mechanical Engineering, Heat Study, Machine Elements, Computer Graphics in Mechanical Engineering, Technical Thermodynamics and Heat Exchange, Electrical Engineering, Pneumatic and Hydro Automatics, etc. Limited choice courses ranging from Heat Energy Supply, General Metrology, Electricity and Magnetism to Medical Physics, Electronics in Medicine, Micro and Nano-technologies, etc. are available. For more information, or to apply to the programme, see the website.</p>
<b>Fee per year:</b>	3515 USD
<b>Requirements:</b>	<ul style="list-style-type: none"><li>• General Certificate of Secondary Education</li><li>• Entrance examination in Mathematics</li><li>• Proficiency in the English language</li></ul>
<b>Accommodation possibilities and costs:</b>	<p>RTU dormitory</p> <ul style="list-style-type: none"><li>• 85 EUR / 60 LVL / 125 USD per person in a shared room per month (2 persons sharing)</li><li>• 230 EUR / 162 LVL / 353 USD in a single room per month at the RTU guest house</li></ul> <p>For additional information, please contact the Foreign Students Department</p>
<b>Contact information:</b>	<p><b>Riga Technical University</b> Foreign Students Department Kaļķu iela 1, room 318, Rīga, Latvia Contact person – <b>Igors Tipans</b> (Director) Tel.: +371 67089013 Mob.: +371 29495699 E-mail: igors@latnet.lv</p>
<b>Website:</b>	<a href="http://www.rtuasd.lv">www.rtuasd.lv</a>

## Engineering Technology, Mechanics and Mechanical Engineering

<b>Type:</b>	Complete study programme
<b>Degree to be obtained:</b>	Master
<b>Length:</b>	Full-time studies – 2 years (4 terms)
<b>Language:</b>	English
<b>Short description of the programme:</b>	The Master programme in Engineering Technology, Mechanics and Mechanical Engineering is designed to provide knowledge and skills in applying scientific foundation to solve engineering problems in various engineering industries. Studies are focusing on specialized courses in Applied Mechanics, Mechanical Engineering and Processing Techniques. The programme covers compulsory courses, limited and free choice courses along with humanities and social science courses. For more information, or to apply to the programme, see the website.
<b>Fee per year:</b>	3515 USD
<b>Requirements:</b>	<ul style="list-style-type: none"> <li>• Bachelor's degree or its equivalent (official transcripts required)</li> <li>• Proficiency in the English language</li> </ul>
<b>Accommodation possibilities and costs:</b>	RTU dormitory <ul style="list-style-type: none"> <li>• 85 EUR / 60 LVL / 125 USD per person in a shared room per month (2 persons sharing)</li> <li>• 230 EUR / 162 LVL / 353 USD in a single room per month at the RTU guest house</li> </ul> For additional information, please contact the Foreign Students Department
<b>Contact information:</b>	<b>Riga Technical University</b> Foreign Students Department Kaļķu iela 1, room 318, Riga, Latvia Contact person – <b>Igors Tipāns</b> (Director) Tel.: +371 67089013 Mob.: +371 29495699 E-mail: igors@latnet.lv
<b>Website:</b>	<a href="http://www.rtuasd.lv">www.rtuasd.lv</a>



# Aviation Transport

<b>Type:</b>	Complete study programme
<b>Degree to be obtained:</b>	Bachelor
<b>Length:</b>	Full-time studies – 4 years (8 terms)
<b>Language:</b>	English
<b>Short description of the programme:</b>	<p>Two specializations are currently possible for the four-year Bachelor programme in Aviation Transport:</p> <ul style="list-style-type: none"> <li>• Aircrafts System Technical Maintenance;</li> <li>• Aircrafts Avionic System Technical Maintenance.</li> </ul> <p>The programme covers compulsory disciplines ranging from general courses, theoretical courses and courses of information technologies to specialized courses. Limited choice subjects are divided according to related specialization. The programme is leading to the Bachelor Degree in Aviation Transport with the qualification “Aircrafts System Technical Maintenance” or “Aircrafts Avionic System Technical Maintenance” accordingly. For more information, or to apply to the programme, see the website.</p>
<b>Fee per year:</b>	3515 USD
<b>Requirements:</b>	<ul style="list-style-type: none"> <li>• General Certificate of Secondary Education</li> <li>• Entrance examination in Mathematics</li> <li>• Proficiency in the English language</li> </ul>
<b>Accommodation possibilities and costs:</b>	<p>RTU dormitory</p> <ul style="list-style-type: none"> <li>• 85 EUR / 60 LVL / 125 USD per person in a shared room per month (2 persons sharing)</li> <li>• 230 EUR / 162 LVL / 353 USD in a single room per month at the RTU guest house</li> </ul> <p>For additional information, please contact the Foreign Students Department</p>
<b>Contact information:</b>	<p><b>Riga Technical University</b>  Foreign Students Department  Kaļķu iela 1, room 318, Rīga, Latvia  Contact person – <b>Igors Tipans</b> (Director)  Tel.: +371 67089013  Mob.: +371 29495699  E-mail: igors@latnet.lv</p>
<b>Website:</b>	www.rtuasd.lv

## Aviation Transport

<b>Type:</b>	Complete study programme
<b>Degree to be obtained:</b>	First Level Higher Professional
<b>Length:</b>	Full-time studies – 3 years (6 terms)
<b>Language:</b>	English
<b>Short description of the programme:</b>	<p>The first level higher professional education in Aviation Transport provides two specializations:</p> <ul style="list-style-type: none"> <li>• Aircraft and Engine Technical Maintenance;</li> <li>• Aircraft Electrical Equipment Technical Maintenance – Avionic.</li> </ul> <p>Basic introductory subjects are included in the compulsory courses, as recommended grounding for engineering and to provide an engineering perspective for students within their field of interest. This programme offers a broad technical competence together with expert knowledge within limited choice courses and practice. The programme is leading to the following qualifications: technician of Aircrafts Avionic System Technical Maintenance or Technician of Mechanics of Aircrafts System Technical Maintenance. For more information, or to apply to the programme, see the website.</p>
<b>Fee per year:</b>	3515 USD
<b>Requirements:</b>	<ul style="list-style-type: none"> <li>• General Certificate of Secondary Education</li> <li>• Entrance examination in Mathematics</li> <li>• Proficiency in the English language</li> </ul>
<b>Accommodation possibilities and costs:</b>	<p>RTU dormitory</p> <ul style="list-style-type: none"> <li>• 85 EUR / 60 LVL / 125 USD per person in a shared room per month (2 persons sharing)</li> <li>• 230 EUR / 162 LVL / 353 USD in a single room per month at the RTU guest house</li> </ul> <p>For additional information, please contact the Foreign Students Department</p>
<b>Contact information:</b>	<p><b>Riga Technical University</b>  Foreign Students Department  Kaļķu iela 1, room 318, Riga, Latvia  Contact person – <b>Igors Tipans</b> (Director)  Tel.: +371 67089013  Mob.: +371 29495699  E-mail: igors@latnet.lv</p>
<b>Website:</b>	<a href="http://www.rtuasd.lv">www.rtuasd.lv</a>

# Aviation Transport

<b>Type:</b>	Complete study programme
<b>Degree to be obtained:</b>	Master
<b>Length:</b>	Full-time studies – 2 years (4 terms)
<b>Language:</b>	English
<b>Short description of the programme:</b>	<p>Two specializations are currently possible for the two-year Master programme in Aviation Transport:</p> <ul style="list-style-type: none"> <li>• Aircrafts System Technical Maintenance</li> <li>• Aircrafts Avionic System Technical Maintenance</li> </ul> <p>The programme covers compulsory disciplines ranging from general courses, theoretical courses and courses of information technologies to specialized courses. Limited choice subjects are divided according to related specialization. The programme is leading to the Master Degree in Aviation Transport with the Engineering Qualification in Aviation Transport. For more information, or to apply to the programme, see the website.</p>
<b>Fee per year:</b>	3515 USD
<b>Requirements:</b>	<ul style="list-style-type: none"> <li>• Diploma of Higher Professional Education for the Fifth-level Professional Qualification and/or the Second Professional Degree in Aviation Transport or Related</li> <li>• Proficiency in the English language</li> </ul>
<b>Accommodation possibilities and costs:</b>	<p>RTU dormitory</p> <ul style="list-style-type: none"> <li>• 85 EUR / 60 LVL / 125 USD per person in a shared room per month (2 persons sharing)</li> <li>• 230 EUR / 162 LVL / 353 USD in a single room per month at the RTU guest house</li> </ul> <p>For additional information, please contact the Foreign Students Department</p>
<b>Contact information:</b>	<p><b>Riga Technical University</b>  Foreign Students Department  Kaļķu iela 1, room 318, Rīga, Latvia  Contact person – <b>Igors Tipans</b> (Director)  Tel.: +371 67089013  Mob.: +371 29495699  E-mail: igors@latnet.lv</p>
<b>Website:</b>	<a href="http://www.rtuasd.lv">www.rtuasd.lv</a>

## Thermal Energy and Heat Engineering

<b>Type:</b>	Complete study programme
<b>Degree to be obtained:</b>	Master
<b>Length:</b>	Full-time studies – 2 years (4 terms)
<b>Language:</b>	English
<b>Short description of the programme:</b>	Large investments in new energy technologies are expected during the next decades. Professional Master Degree in Power and Heat Engineering is intended to supply a new generation of young professional engineers to this sector. The programme is designed to equip students with the theory and techniques required to improve thermal energy and heat engineering sector and to remain competitive on the labour market managing vital issues of energy supply. For more information, or to apply to the programme, see the website.
<b>Fee per year:</b>	3515 USD
<b>Requirements:</b>	<ul style="list-style-type: none"> <li>• Bachelor's degree or its equivalent (official transcripts required)</li> <li>• Proficiency in the English language</li> </ul>
<b>Accommodation possibilities and costs:</b>	RTU dormitory <ul style="list-style-type: none"> <li>• 85 EUR / 60 LVL / 125 USD per person in a shared room per month (2 persons sharing)</li> <li>• 230 EUR / 162 LVL / 353 USD in a single room per month at the RTU guest house</li> </ul> For additional information, please contact the Foreign Students Department
<b>Contact information:</b>	<b>Riga Technical University</b> Foreign Students Department Kaļķu iela 1, room 318, Riga, Latvia Contact person – <b>Igors Tipans</b> (Director) Tel.: +371 67089013 Mob.: +371 29495699 E-mail: igors@latnet.lv
<b>Website:</b>	<a href="http://www.rtuasd.lv">www.rtuasd.lv</a>

## Applied Mechanics

<b>Type:</b>	Complete study programme
<b>Degree to be obtained:</b>	Doctor
<b>Length:</b>	Full-time studies – 3 years (6 terms) Part-time studies – 4 years
<b>Language:</b>	English
<b>Short description of the programme:</b>	<p>A Doctoral degree is grounding for any research career. RTU has leading positions in Latvia participating in large EU funded projects. For the last three years the RTU research labs have received millions of EUR to renovate scientific research equipment and infrastructure. If you have a strong personal interest in the subject of your research, a strong sense of achievement and self-confidence or desire to pursue your career then it is time to apply. Experience in research work has a real value in the education system and in global society itself.</p> <p>For more information concerning the subject of your research or any possible assistance, or to apply to the programme, see the website or contact the department.</p>
<b>Fee per year:</b>	4480 USD (full-time)
<b>Requirements:</b>	<ul style="list-style-type: none"> <li>• Master's degree in the corresponding field</li> <li>• Proficiency in the English language</li> </ul>
<b>Accommodation possibilities and costs:</b>	<p>RTU dormitory</p> <ul style="list-style-type: none"> <li>• 85 EUR / 60 LVL / 125 USD per person in a shared room per month (2 persons sharing)</li> <li>• 230 EUR / 162 LVL / 353 USD in a single room per month at the RTU guest house</li> </ul> <p>For additional information, please contact the Foreign Students Department</p>
<b>Contact information:</b>	<p><b>Riga Technical University</b>  Foreign Students Department  Kaļķu iela 1, room 318, Riga, Latvia  Contact person – <b>Igors Tipans</b> (Director)  Tel.: +371 67089013  Mob.: +371 29495699  E-mail: igors@latnet.lv</p>
<b>Website:</b>	www.rtuasd.lv



## Faculty of Engineering Economics and Management

### Entrepreneurship and Management

<b>Type:</b>	Complete study programme
<b>Degree to be obtained:</b>	Bachelor
<b>Length:</b>	Full-time studies – 3 years (6 terms)
<b>Language:</b>	English
<b>Short description of the programme:</b>	<p>For the last two decades, the subject of entrepreneurship has moved to the key position of management thinking and education. The Bachelor programme in Entrepreneurship and Management is designed to provide an understanding of how to develop a new business plan, carry out marketing research to influence the feasibility of a new business, obtain capital resources for a new business enterprise, manage the cash flow of a new business, and understand the legal issues related to entrepreneurship and management. At completion of the programme students are awarded with the Bachelor Degree of Social Sciences in Management. For more information, or to apply to the programme, see the website.</p>
<b>Fee per year:</b>	3515 USD
<b>Requirements:</b>	<ul style="list-style-type: none"><li>• General Certificate of Secondary Education</li><li>• Entrance examination in Mathematics</li><li>• Proficiency in the English language</li></ul>
<b>Accommodation possibilities and costs:</b>	<p>RTU dormitory</p> <ul style="list-style-type: none"><li>• 85 EUR / 60 LVL / 125 USD per person in a shared room per month (2 persons sharing)</li><li>• 230 EUR / 162 LVL / 353 USD in a single room per month at the RTU guest house</li></ul> <p>For additional information, please contact the Foreign Students Department</p>
<b>Contact information:</b>	<p><b>Riga Technical University</b> Foreign Students Department Kaļķu iela 1, room 318, Riga, Latvia Contact person – <b>Igors Tipans</b> (Director) Tel.: +371 67089013 Mob.: +371 29495699 E-mail: igors@latnet.lv</p>
<b>Website:</b>	<a href="http://www.rtuasd.lv">www.rtuasd.lv</a>

# Entrepreneurship and Management

<b>Type:</b>	Complete study programme
<b>Degree to be obtained:</b>	Master
<b>Length:</b>	Full-time studies – 2 years (4 terms)
<b>Language:</b>	English
<b>Short description of the programme:</b>	<p>This programme is designed for students who desire to improve their knowledge in studying entrepreneurship and management or to pursue a career in a company that requires continuous education and innovation. It provides a comprehensive knowledge of introductory subjects e.g. strategic management, marketing theory, e-commerce, investments and financing, personnel management, etc. as these areas relate to entrepreneurial business. The programme comprises the following specializations: Business Economics; Entrepreneurship Organization; Management of International Economic Relations; Financial Risk Management; Business Logistics Management and Transport Economics; Business Economy and Organization in Construction. For more information, or to apply to the programme, see the website.</p>
<b>Fee per year:</b>	3515 USD
<b>Requirements:</b>	<ul style="list-style-type: none"> <li>• Bachelor's degree or its equivalent (official transcripts required)</li> <li>• Proficiency in the English language</li> </ul>
<b>Accommodation possibilities and costs:</b>	<p>RTU dormitory</p> <ul style="list-style-type: none"> <li>• 85 EUR / 60 LVL / 125 USD per person in a shared room per month (2 persons sharing)</li> <li>• 230 EUR / 162 LVL / 353 USD in a single room per month at the RTU guest house</li> </ul> <p>For additional information, please contact the Foreign Students Department</p>
<b>Contact information:</b>	<p><b>Riga Technical University</b>  Foreign Students Department  Kalkū iela 1, room 318, Riga, Latvia  Contact person – <b>Igors Tipans</b> (Director)  Tel.: +371 67089013  Mob.: +371 29495699  E-mail: igors@latnet.lv</p>
<b>Website:</b>	www.rtuasd.lv

## Innovations and Entrepreneurship

<b>Type:</b>	Complete study programme
<b>Degree to be obtained:</b>	Master
<b>Length:</b>	Full-time studies – 2 years and 5 months (5 terms)
<b>Language:</b>	English
<b>Short description of the programme:</b>	The RTU Faculty of Engineering Economics offers a professional master programme in Innovations and Entrepreneurship. The programme is for students with the Professional Bachelor degree or the 5 <sup>th</sup> level of Professional Qualification or with Academic Bachelor degree of Social Sciences in Management. The programme comprises compulsory subjects e.g. Strategy Formulation, Change Management and Organizational Design, Technology and New Product Marketing, Managerial Cost Accounting and Project Analysis and other specialized courses, professional specialized courses and practical work in the related field. For more information, or to apply to the Program, see the website.
<b>Fee per year:</b>	3515 USD
<b>Requirements:</b>	<ul style="list-style-type: none"> <li>• Bachelor's degree and minimum work experience of 3 years in leading position</li> <li>• Proficiency in the English language</li> </ul>
<b>Accommodation possibilities and costs:</b>	RTU dormitory <ul style="list-style-type: none"> <li>• 85 EUR / 60 LVL / 125 USD per person in a shared room per month (2 persons sharing)</li> <li>• 230 EUR / 162 LVL / 353 USD in a single room per month at the RTU guest house</li> </ul> For additional information, please contact the Foreign Students Department
<b>Contact information:</b>	<b>Riga Technical University</b> Foreign Students Department Kaļķu iela 1, room 318, Riga, Latvia Contact person – <b>Igors Tipans</b> (Director) Tel.: +371 67089013 Mob.: +371 29495699 E-mail: igors@latnet.lv
<b>Website:</b>	www.rtuasd.lv





## Institute of Languages

### Technical Translation

<b>Type:</b>	Complete study programme
<b>Degree to be obtained:</b>	Bachelor
<b>Length:</b>	Full-time studies – 4 years (8 terms)
<b>Language:</b>	English
<b>Short description of the programme:</b>	<p>The RTU Institute of Languages offers a higher professional study programme “Technical translation” (Bachelor - undergraduate) preparing technical translators to work as personal assistants and researchers in information technology, telecommunications, materials science, construction, architecture and urban planning, engineering economics, and other fields of engineering sciences.</p> <p>For more information, or to apply to the Programme, see the website.</p>
<b>Fee per year:</b>	3515 USD
<b>Requirements:</b>	<ul style="list-style-type: none"><li>• General Certificate of Secondary Education</li><li>• Proficiency in the English language</li></ul>
<b>Accommodation possibilities and costs:</b>	<p>RTU dormitory</p> <ul style="list-style-type: none"><li>• 85 EUR / 60 LVL / 125 USD per person in a shared room per month (2 persons sharing)</li><li>• 230 EUR / 162 LVL / 353 USD in a single room per month at the RTU guest house</li></ul> <p>For additional information, please contact the Foreign Students Department</p>
<b>Contact information:</b>	<p><b>Riga Technical University</b> Foreign Students Department Kalkū iela 1, room 318, Riga, Latvia Contact person – <b>Igors Tipans</b> (Director) Tel.: +371 67089013 Mob.: +371 29495699 E-mail: igors@latnet.lv</p>
<b>Website:</b>	<a href="http://www.rtuasd.lv">www.rtuasd.lv</a>

## Technical Translation

<b>Type:</b>	Complete study programme
<b>Degree to be obtained:</b>	Master
<b>Length:</b>	Full-time studies – 1 year and 5 months (3 terms)
<b>Language:</b>	English
<b>Short description of the programme:</b>	<p>The RTU Institute of Languages offers a higher professional study programme "Technical translation" (Master-graduate) preparing technical translators to work as personal assistants and researchers in information technology, telecommunications, materials science, construction, architecture and urban planning, engineering economics, and other fields of engineering sciences. RTU is one of the tertiary establishments in Latvia teaching its students to cognize the world. Cognition of the world is based on the ability to speak the same language. The Institute of Languages provides knowledge facilitating performance of work, studies and exchange of experience in other countries, professional communication in a foreign language medium.</p> <p>For more information, or to apply to the Programme, see the website.</p>
<b>Fee per year:</b>	3515 USD
<b>Requirements:</b>	<ul style="list-style-type: none"> <li>Professional Bachelor Degree in Technical Translation (or equivalent qualifications in translation) or 2nd Level Professional Higher Education in Translation</li> </ul>
<b>Accommodation possibilities and costs:</b>	<p>RTU dormitory</p> <ul style="list-style-type: none"> <li>85 EUR / 60 LVL / 125 USD per person in a shared room per month (2 persons sharing)</li> <li>230 EUR / 162 LVL / 353 USD in a single room per month at the RTU guest house</li> </ul> <p>For additional information, please contact the Foreign Students Department</p>
<b>Contact information:</b>	<p><b>Riga Technical University</b>  Foreign Students Department  Kaļķu iela 1, room 318, Riga, Latvia  Contact person – <b>Igors Tipans</b> (Director)  Tel.: +371 67089013  Mob.: +371 29495699  E-mail: igors@latnet.lv</p>
<b>Website:</b>	<a href="http://www.rtuasd.lv">www.rtuasd.lv</a>

## Faculty of Architecture and Urban Planning



### Summer school for students of architecture and urban planning

<b>Type:</b>	Summer school
<b>Degree to be obtained:</b>	Credit points upon completion of courses
<b>Length:</b>	2 weeks
<b>Language:</b>	English
<b>Short description of the programme:</b>	<p>Summer school for students of architecture and urban planning is organized every year and takes place 2 weeks in August.</p> <p>Every year summer school has a different topic.</p> <p>During the summer school you will be offered a wide programme consisting of lectures, seminars and discussions, workshops and sightseeing tours. The programme will be conducted by qualified practicing architects, urban planners, historians, developers etc. Seminars, lectures and workshops will be held in English.</p> <p>The social programme will include guided tours and excursions, visits to museums, film and folk-dance evenings, sailing tour and more.</p>
<b>Fee:</b>	635 EUR / 446 LVL / 932 USD
<b>Scholarship possibilities:</b>	Can be different every year
<b>Requirements:</b>	<ul style="list-style-type: none"> <li>You have to have finished at least one year of studies by the time the summer school starts</li> <li>You speak fluent English</li> <li>You appreciate the experience of highly qualified professionals and enjoy creative work</li> </ul> <p>Published on website (<a href="http://www.summerschool.rtu.lv">http://www.summerschool.rtu.lv</a>) every year</p>
<b>Accommodation possibilities and costs:</b>	Students dormitory. Costs depend on the type of dormitory, 7 – 14 EUR / 5 – 10 LVL / 10 – 21 USD per night.
<b>Contact information:</b>	<p><b>Riga Technical University</b>  International and Public Relations Department  1 Kaļķu Street, Room 322, Riga, LV-1658, Latvia  Contact person – <b>Evita Serjogina</b>  Tel.: +371 67089021  E-mail: <a href="mailto:evita.serjogina@rtu.lv">evita.serjogina@rtu.lv</a></p>
<b>Website:</b>	<a href="http://www.summerschool.rtu.lv">http://www.summerschool.rtu.lv</a>



## Faculty of Philology

### Baltic Sea Region Studies



<b>Type:</b>	Complete study programme		
<b>Degree to be obtained:</b>	Master		
<b>Length:</b>	2 years (4 semesters)		
<b>Language:</b>	English		
<b>Short description of the programme:</b>	<p>This is a two year programme providing an excellent opportunity to obtain an interdisciplinary Master's degree in Baltic Sea region issues. The programme offers the opportunity to develop competences in the humanities, social, and environmental disciplines related to Baltic Sea region countries. The need for such competences has arisen due to the continuing integration among Baltic Sea region countries and, with the rise of their cultural, economic and political importance within the European Union and the world. On completion of the programme, the master's graduates are then qualified to continue their academic research at doctoral level and/or to pursue careers in public service or private enterprise.</p> <p>Partner universities: the program involves four partner universities, each with a comparable programme: the University of Turku in Finland, the University of Tartu in Estonia, the University of Latvia (UL), and the Vytautas Magnus University in Lithuania. This partnership will enable student mobility within the programme as at least one semester could be taken at a partner university.</p>		
<b>Fee per year: (for EU / non-EU students)</b>	2561 or 3699 EUR / 1800 or 2600 LVL / 3758 or 5428 USD		
<b>Scholarship possibilities:</b>	EU students can apply for competition for study places financed by the state.		
<b>Requirements:</b>	<p><b>Admission requirements:</b></p> <ul style="list-style-type: none"> <li>• The applicant for Master degree studies is required to hold a Bachelor degree or have an equivalent level of education</li> <li>• If English is not the native language of the applicant and/or his previous education is not obtained in English the applicant must present one of the following documents: <ol style="list-style-type: none"> <li>1) TOEFL IBT (Test of English as a Foreign Language Internet Based Test) at least 80 or TOEFL PBT (Test of English as a Foreign Language Paper Based Test) at least 550</li> <li>2) IELTS (International English Language Testing System) at least 6 points</li> <li>3) Cambridge Certificate of Proficiency in English – C; Cambridge Certificate in Advanced English – B</li> <li>4) a positive grade in English at bachelor degree diploma or at an equivalent certified document</li> <li>5) a positive grade in English achieved in the entrance examination</li> </ol> </li> </ul>		
<b>Accommodation possibilities and costs:</b>	The number of places at the University dormitory is very limited. Usually, all international students are housed in double rooms with a common kitchen for every 5 rooms. Linen, blankets and pillows are provided as well as some kitchen utensils. The payment for the dormitory is starting at 75 Ls (107 EUR, 157 USD) per month ( <a href="http://www.lu.lv/eng/admission/general/accommodation.html">http://www.lu.lv/eng/admission/general/accommodation.html</a> ). If you do not wish to stay at a dormitory, it is advisable to make private housing arrangements beforehand.		
<b>Contact information:</b>	<p><b>University of Latvia</b>, Faculty of Philology  Visvalža iela 4a, Rīga, LV-1050, Latvia  Contact persons:</p> <table> <tr> <td><b>Valdis Muktupāvels</b> Tel.: +371 29147903 E-mail: <a href="mailto:vm@lu.lv">vm@lu.lv</a></td> <td><b>Helēna Podniece</b> (Programme Assistant) Tel.: +371 67033848 E-mail: <a href="mailto:hpodn@lanet.lv">hpodn@lanet.lv</a>;</td> </tr> </table>	<b>Valdis Muktupāvels</b> Tel.: +371 29147903 E-mail: <a href="mailto:vm@lu.lv">vm@lu.lv</a>	<b>Helēna Podniece</b> (Programme Assistant) Tel.: +371 67033848 E-mail: <a href="mailto:hpodn@lanet.lv">hpodn@lanet.lv</a> ;
<b>Valdis Muktupāvels</b> Tel.: +371 29147903 E-mail: <a href="mailto:vm@lu.lv">vm@lu.lv</a>	<b>Helēna Podniece</b> (Programme Assistant) Tel.: +371 67033848 E-mail: <a href="mailto:hpodn@lanet.lv">hpodn@lanet.lv</a> ;		
<b>Website:</b>	<a href="http://www.lu.lv/eng/">http://www.lu.lv/eng/</a> <a href="http://www.lu.lv/eng/balticstudies/index.html/">http://www.lu.lv/eng/balticstudies/index.html/</a>		

## Faculty of Economics and Management

### European Studies



<b>Type:</b>	Complete study programme
<b>Degree to be obtained:</b>	Master
<b>Length:</b>	2 years (4 semesters)
<b>Language:</b>	English
<b>Short description of the programme:</b>	<p>Graduates have a broad field of opportunities to choose from, including economic and legal adviser activities, positions in private and public management, lobbying activities, political offices and functions and in the diplomatic services. The faculty is composed of international and national university lecturers and EU practitioners. Emphasis is laid on an interdisciplinary approach in teaching and learning, group work, discussions and a lively exchange between participants.</p> <p>Programme suggests: studies in European economics, law and politics, an intensive seminar in Brussels plus courses on economics and politics transformation of the Baltic States offer an ideal combination of theoretical knowledge, management education, practical skills and European expertise.</p> <p>Academic career: the programme provides opportunities for participants to absorb the latest EU developments in economics, political sciences and law, and to be able to continue the studies in doctoral programme.</p>
<b>Fee per year: (for EU / non-EU students)</b>	2561 or 3699 EUR / 1800 or 2600 LVL / 3758 or 5428 USD
<b>Requirements:</b>	<p><b>Admission requirements:</b></p> <ul style="list-style-type: none"> <li>The applicant for Master degree studies is required to hold a Bachelor degree or have an equivalent level of education</li> <li>If English is not the native language of the applicant and/or his previous education is not obtained in English the applicant must present one of the following documents: <ol style="list-style-type: none"> <li>TOEFL IBT (Test of English as a Foreign Language Internet Based Test) at least 80 or TOEFL PBT (Test of English as a Foreign Language Paper Based Test) at least 550</li> <li>IELTS (International English Language Testing System) at least 6 points</li> <li>Cambridge Certificate of Proficiency in English – C; Cambridge Certificate in Advanced English – B</li> <li>a positive grade in English at bachelor degree diploma or at an equivalent certified document</li> <li>a positive grade in English achieved in the entrance examination</li> </ol> </li> </ul>
<b>Accommodation possibilities and costs:</b>	The number of places at the University dormitory is very limited. Usually, all international students are housed in double rooms with a common kitchen for every 5 rooms. Linen, blankets and pillows are provided as well as some kitchen utensils. The payment for the dormitory is starting at 75 Ls (107 EUR, 157 USD) per month ( <a href="http://www.lu.lv/eng/admission/general/accomodation.html">http://www.lu.lv/eng/admission/general/accomodation.html</a> ). If you do not wish to stay at a dormitory, it is advisable to make private housing arrangements beforehand.
<b>Contact information:</b>	<p><b>University of Latvia</b>, Faculty of Economics and Management  Aspazijas bulvāris 5, Rīga, LV-1050, Latvia  Contact person – <b>Kate Nitina</b>  Tel.: +371 67034795. Fax: +371 67034775. E-mail: <a href="mailto:nitina@lu.lv">nitina@lu.lv</a></p>
<b>Website:</b>	<a href="http://www.lu.lv/eng/">http://www.lu.lv/eng/</a> <a href="http://www.evf.lu.lv/eng/">http://www.evf.lu.lv/eng/</a>
<b>Additional information:</b>	<p>Additional opportunities:</p> <ul style="list-style-type: none"> <li>Study/research week in Brussels, with visits and lectures at all main European institutions and NATO</li> <li>Study/research week at the European Central Bank in Frankfurt and Applied Sciences University of the German Central Bank on European financial issues</li> <li>A three weeks intensive EU Study Tour (Brussels, Frankfurt, Strasburg and Luxemburg) in cooperation with Canadian European Studies Network</li> <li>Studies at various partner universities within EU LLP/Erasmus scheme</li> <li>Research skills development in funded projects on topical European themes</li> </ul>

## MBA International Business, with specialization in Export Management



<b>Type:</b>	Complete study programme
<b>Degree to be obtained:</b>	Master
<b>Length:</b>	2 years (4 semesters)
<b>Language:</b>	English
<b>Short description of the programme:</b>	<p>The MBA programme „International Business“ is designed to meet the business-learning needs of a businessman on a global track and to address managerial issues that are relevant to doing business across national boundaries, while incorporating the necessary basics of business.</p> <p>The programme concentrates on the more detailed aspects of international economics, marketing, management and finance. Degree requirements have been designed to provide practical knowledge and training for future business executives. The programme provides the skills required to compete in the global market.</p> <p>This master programme is an international study programme executed by the University of Latvia in cooperation with Steinbeis University Berlin. 50% of lectures and seminars are held by teaching staff from each institution.</p>
<b>Fee per year: (for EU / non-EU students)</b>	2561 or 3699 EUR / 1800 or 2600 LVL / 3758 or 5428 USD
<b>Requirements:</b>	<p>Admission to professional MBA programme “International Business” with specialization in Export Management is a competitive process that takes into consideration your academic aptitude and professional qualifications. To be eligible for admission, you must have:</p> <ul style="list-style-type: none"> <li>• Bachelor’s degree or equivalent degree in Economics or Business Administration</li> <li>• Bachelor’s or Master’s degree in Social Sciences or other allied Sciences: Mathehematics, Computer Sciences, Information Technology, Physics or Engineering</li> <li>• At least 2 years of professional experience in Business or Economics (please include detailed description of your professional activity in your CV)</li> <li>• If English is not the native language of the applicant and/or his previous education is not obtained in English the applicant must present one of the following documents: <ol style="list-style-type: none"> <li>1) TOEFL IBT (Test of English as a Foreign Language Internet Based Test) at least 80 or TOEFL PBT (Test of English as a Foreign Language Paper Based Test) at least 550</li> <li>2) IELTS (International English Language Testing System) at least 6 points</li> <li>3) Cambridge Certificate of Proficiency in English – C; Cambridge Certificate in Advanced English – B</li> <li>4) a positive grade in English at bachelor degree diploma or at an equivalent certified document</li> <li>5) a positive grade in English achieved in the entrance examination</li> </ol> </li> </ul> <p>Acceptance decision will be made by the Admission Commission on the base of entrance examination results. Process of candidate selection comprises 3 stages:</p> <ol style="list-style-type: none"> <li>1. Review of application documents</li> <li>2. Entrance Examination Test</li> <li>3. Interview in English</li> </ol>
<b>Accommodation possibilities and costs:</b>	<p>The number of places at the University dormitory is very limited. Usually, all international students are housed in double rooms with a common kitchen for every 5 rooms. Linen, blankets and pillows are provided as well as some kitchen utensils. The payment for the dormitory is starting at 75 Ls (107 EUR, 157 USD) per month (<a href="http://www.lu.lv/eng/admission/general/accomodation.html">http://www.lu.lv/eng/admission/general/accomodation.html</a>). If you do not wish to stay at a dormitory, it is advisable to make private housing arrangements beforehand.</p>
<b>Contact information:</b>	<p><b>University of Latvia</b>, Faculty of Economics and Management  Aspazijas bulvāris 5, Rīga, LV-1050, Latvia  Contact person – <b>Baiba Savrina</b>  Tel.: +371 67034776. Fax: +371 67034775. E-mail: <a href="mailto:baiba.savrina@lu.lv">baiba.savrina@lu.lv</a></p>
<b>Website:</b>	<a href="http://www.lu.lv/eng/">http://www.lu.lv/eng/</a> <a href="http://www.evf.lu.lv/eng/">http://www.evf.lu.lv/eng/</a>



## Faculty of Modern Languages

### German Philology



<b>Type:</b>	Complete study programme
<b>Degree to be obtained:</b>	Bachelor
<b>Length:</b>	Full-time studies – 3 years (6 semesters) Part-time studies (on Saturdays) – 4 years (8 semesters)
<b>Language:</b>	German
<b>Short description of the programme:</b>	<p>We suggest choosing this study programme if you have a good knowledge of the German language and interest in the German-speaking countries, if you plan to cooperate with institutions and companies from Germany, Austria or Switzerland or if you are interested in the profession of translator or interpreter. During the 3-year Bachelor's programme we offer to acquire different subjects, which will help you prepare for interesting fields of action. In addition it is planned to learn another foreign language.</p> <p>The graduates can work in state institutions and in private companies in the European Union or continue German Philology studies in the Master's degree programme.</p>
<b>Fee per year: (for EU / non-EU students)</b>	1850 or 2846 EUR / 1300 or 2000 LVL / 2714 or 4175 USD
<b>Scholarship possibilities:</b>	EU students can apply for competition for study places financed by state.
<b>Requirements:</b>	<p><b>Admission requirements:</b></p> <p>The selection criterion is based on following grades recorded in the general secondary education diploma supplement (grade achievement):</p> <p>The grade in German in secondary education diploma<sup>1</sup> (at least satisfactory) + the overall average grade in secondary education diploma + certificate of state language (if available)<sup>2</sup></p> <p><sup>1</sup> The grade in German in secondary education diploma can be replaced with one of the following documents:</p> <ol style="list-style-type: none"> <li>1) DSD (Deutsches Sprachdiplom der Kultusministerkonferenz) at least level 2</li> <li>2) DSH (Deutsche Sprachprüfung für den Hochschulzugang) at least level 2</li> <li>3) TestDaF (Test Deutsch als Fremdsprache) at least level 4 at all test sections</li> <li>4) KDS (Kleines Deutsches Sprachdiplom)</li> <li>5) GDS (Großes Deutsches Sprachdiplom)</li> <li>6) ZOP (Zentrale Oberstufenprüfung)</li> </ol> <p><sup>2</sup> EU citizens who submit certificate of state language issued by the Centre for Curriculum Development and Examinations of the Ministry of Education and Science of the Republic of Latvia at least in the level IB can register to the competition for a state financed study place.</p>
<b>Accommodation possibilities and costs:</b>	The number of places at the University dormitory is very limited. Usually, all international students are housed in double rooms with a common kitchen for every 5 rooms. Linen, blankets and pillows are provided as well as some kitchen utensils. The payment for the dormitory is starting at 75 Ls (107 EUR, 157 USD) per month ( <a href="http://www.lu.lv/eng/admission/general/accomodation.html">http://www.lu.lv/eng/admission/general/accomodation.html</a> ). If you do not wish to stay at a dormitory, it is advisable to make private housing arrangements beforehand.
<b>Contact information:</b>	<p><b>University of Latvia</b>, Faculty of Modern Languages, Visvalža iela 4a-426, Riga, LV-1050</p> <p>Contact person – <b>Dr. Silvija Pavidis</b> (Director of the Programme, Ass. Professor)</p> <p>Tel.: +371 67034822. Mob.: +371 26498238. Fax: +371 67227802.</p> <p>E-mail: <a href="mailto:silvija.pavidis@lu.lv">silvija.pavidis@lu.lv</a></p>
<b>Website:</b>	<a href="http://www.lu.lv/eng/">http://www.lu.lv/eng/</a> <a href="http://www.lu.lv/eng/studies/english/german_philology.html">http://www.lu.lv/eng/studies/english/german_philology.html</a>

## French Philology



<b>Type:</b>	Complete study programme
<b>Degree to be obtained:</b>	Bachelor
<b>Length:</b>	Full-time studies – 4 years (8 semesters)
<b>Language:</b>	French
<b>Short description of the programme:</b>	<p>The French Philology Bachelor's degree programme gives you the opportunity to obtain new knowledge about the French-speaking countries, their culture, literature, language and art. During the studies in this programme you will acquire and improve the knowledge of the French and other Western European languages, stimulate your scholastic development by doing research in linguistics, cultural history etc.</p> <p>The French philology Bachelor's degree programme prepares academically educated philologists – Romanists, who can work in embassies, joint ventures, translate and teach languages, become guides – interpreters. The graduates can also continue their studies in the French Philology Master's degree programme. Our successful cooperation with the French, Italian and Canadian embassies, with Baltic and Western European universities is a good basis for involvement in the varied labour market of the European Union.</p>
<b>Fee per year: (for EU / non-EU students)</b>	1850 or 2846 EUR / 1300 or 2000 LVL / 2714 or 4175 USD
<b>Scholarship possibilities:</b>	EU students can apply for competition for study places financed by state.
<b>Requirements:</b>	<p><b>Admission requirements:</b></p> <p>The selection criterion is based on following grades recorded in the general secondary education diploma supplement (grade achievement):</p> <p>The grade at secondary education diploma in French<sup>1</sup> (at least satisfactory) + the overall average grade at secondary education diploma + certificate of state language (if available)<sup>2</sup></p> <p><sup>1</sup> The grade at secondary education diploma in French can be replaced with one of following documents:</p> <ol style="list-style-type: none"> <li>1) DELF (Diplôme d'études en langue française) B2</li> <li>2) DALF (Diplôme approfondi de langue française) at least C1</li> <li>3) TCF (Test de connaissance du français) at least 400 points</li> <li>4) TEF (Test d'Evaluation du Français) at least 541 points</li> </ol> <p><sup>2</sup> EU citizens who submit certificate of state language issued by The Centre for Curriculum Development and Examinations of the Ministry of Education and Science Republic of Latvia at least the level IB can register to the competition of state financed study place.</p>
<b>Accommodation possibilities and costs:</b>	<p>The number of places at the University dormitory is very limited. Usually, all international students are housed in double rooms with a common kitchen for every 5 rooms. Linen, blankets and pillows are provided as well as some kitchen utensils. The payment for the dormitory is starting at 75 Ls (107 EUR, 157 USD) per month (<a href="http://www.lu.lv/eng/admission/general/accomodation.html">http://www.lu.lv/eng/admission/general/accomodation.html</a>). If you do not wish to stay at a dormitory, it is advisable to make private housing arrangements beforehand.</p>
<b>Contact information:</b>	<p><b>University of Latvia</b>, Faculty of Modern Languages  Visvalža iela 4a, room 333.  Contact person – <b>Zanda Usāre</b> (Public Relations Coordinator)  Tel.: +371 67034836  E-mail: <a href="mailto:zanda.usare@lu.lv">zanda.usare@lu.lv</a></p>
<b>Website:</b>	<a href="http://www.lu.lv/eng/">http://www.lu.lv/eng/</a> <a href="http://www.lu.lv/eng/studies/english/french_philology.html">http://www.lu.lv/eng/studies/english/french_philology.html</a>





## Faculty of Medicine

### Medical Doctor

<b>Type:</b>	Complete study programme
<b>Degree to be obtained:</b>	MD (Medical Doctor)
<b>Length:</b>	6 years (12 semesters)
<b>Language:</b>	English
<b>Short description of the programme:</b>	<p>The programme corresponds to the EU standards and professional requirements set for MD. The obtained degree is in line with European labor market requirements (part of European comparative degree system) and allows free movement within Europe. During studies students learn sciences and methods of medicine based on human morphology (structure), functions (physiology), psychology, basic clinical practice (anamnesis, overall objective examination, and interpretation of results, manipulation competence), get knowledge of health promotion and disease prevention in the context of family and society. The programme has been accredited for full term period by Higher Education Evaluation Agency of Latvia.</p> <p>The programme for foreign students is held in English, but students have to learn Latvian before clinical subjects start on the 3rd study year for having a successful contact with patients. After completing the programme, in case of positive results in diploma research project defense and passing final exams, the students will get Medical Doctor Degree (M.D) and a diploma of higher professional education which allows entering residency and PhD studies.</p>
<b>Fee per year:</b>	8964 EUR / 6300 LVL / 13152 USD
<b>Requirements:</b>	<p>Admission is based on the applicant's:</p> <ul style="list-style-type: none"> <li>• diploma of general secondary education with special emphasis on English knowledge and positive grades in biology, chemistry and physics or natural sciences (secondary school documents will be checked in the Academic Information Centre in Latvia)</li> <li>• if English is not your native language and/or your previous education is not obtained in English you must present one of the following documents: <ol style="list-style-type: none"> <li>1) TOEFL IBT (Test of English as a Foreign Language Internet Based Test) at least 80 or TOEFL PBT (Test of English as a Foreign Language Paper Based Test) at least 550</li> <li>2) IELTS (International English Language Testing System) at least 6 points</li> <li>3) Cambridge Certificate of Proficiency in English – C; Cambridge Certificate in Advanced English – B</li> <li>4) a positive grade in English at general secondary education diploma or at an equivalent certified document</li> </ol> </li> </ul>
<b>Accommodation possibilities and costs:</b>	<p>The number of places at the University dormitory is very limited. Usually, all international students are housed in double rooms with a common kitchen for every 5 rooms. Linen, blankets and pillows are provided as well as some kitchen utensils. The payment for the dormitory is starting at 75 Ls (107 EUR, 157 USD) per month (<a href="http://www.lu.lv/eng/admission/general/accomodation.html">http://www.lu.lv/eng/admission/general/accomodation.html</a>). If you do not wish to stay at a dormitory, it is advisable to make private housing arrangements beforehand.</p>
<b>Contact information:</b>	<p><b>University of Latvia</b>, Faculty of Medicine. Šarlotes iela 1a, Rīga, LV-1001  Tel.: +371 67370665; +371 67370642. Fax: +371 67366306  E-mail: <a href="mailto:lumedi@lu.lv">lumedi@lu.lv</a></p>
<b>Website:</b>	<p><a href="http://www.lu.lv/eng/">http://www.lu.lv/eng/</a>  <a href="http://www.lu.lv/eng/studies/english/medical.html">http://www.lu.lv/eng/studies/english/medical.html</a></p>

# Faculty of Education and Psychology

## Educational Treatment of Diversity



<b>Type:</b>	Complete study programme
<b>Degree to be obtained:</b>	Master
<b>Length:</b>	Part-time studies – 2 years (4 semesters)
<b>Language:</b>	English, Spanish, German
<b>Short description of the programme:</b>	<p><b>Participating universities:</b> Coordinating University: Distance Education National University of Spain; Participant Universities: University of Karlova (Prague, Chequia), University of Latvia (Riga, Latvia); Education University of Ludwigsburg (Reutlingen, Germany)</p> <p><b>Study models:</b> As the Course is designed to be imparted as full-time or part-time interactive self-organised e-learning models there will be no obligatory regular face-to-face lectures. To substitute this presence of regular lecturing, didactic material with the necessary structure and reinforcements to be used by students in an independent way has been prepared. The main focus to be observed in tutoring will be the contribution to clarify the students' needs, to help them solve their doubts and problems and to orientate them to obtain the necessary successful result. For this reason, tutoring sessions will not ordinarily be imparted as lectures, but as intercommunicative opportunities where students can directly and flexibly speak to the Professor and receive his/her specific and definite answer to the questions put forward.</p>
<b>Fee per year: (for EU / non-EU students)</b>	1281 or 2960 EUR / 900 or 2080 LVL / 1879 or 4342 USD
<b>Requirements:</b>	<p><i>Previous studies (400 points) accredited by:</i></p> <ul style="list-style-type: none"> <li>• Bachelor's diploma with a supplement (maximum 150);</li> <li>• Diploma of the second level higher professional education with a supplement (maximum 150);</li> <li>• Other documents certifying previous education (each 25, maximum 100).</li> </ul> <p><i>Exchange experience (200 points) in:</i></p> <ul style="list-style-type: none"> <li>• The specific field (maximum 200)</li> <li>• Other quite similar fields (maximum 150)</li> <li>• Other slightly similar fields (maximum 100)</li> <li>• Other experience unrelated to the field (maximum 50)</li> <li>• No experience (0)</li> </ul> <p><i>Knowledge of European languages (100 point) in:</i></p> <ul style="list-style-type: none"> <li>• Main European languages (English, Spanish, German), or</li> <li>• Other European languages of consortium countries will be estimated</li> </ul> <p>Interview (300 points) will be held in English and it will focus on relevant aspects such as: motivation, team working ability, open thinking, social adaptation, intellectual maturity, knowledge avidity, interest in the field, commitment to involved people, other aspects considered relevant.</p>
<b>Accommodation possibilities and costs:</b>	The number of places at the University dormitory is very limited. Usually, all international students are housed in double rooms with a common kitchen for every 5 rooms. Linen, blankets and pillows are provided as well as some kitchen utensils. The payment for the dormitory is starting at 75 Ls (107 EUR, 157 USD) per month ( <a href="http://www.lu.lv/eng/admission/general/accomodation.html">http://www.lu.lv/eng/admission/general/accomodation.html</a> ). If you do not wish to stay at a dormitory, it is advisable to make private housing arrangements beforehand.
<b>Contact information:</b>	<p><b>University of Latvia</b>, Faculty of Education and Psychology  Jūrmalas gatve 74/76, Riga, LV-1083, Latvia  Contact person – <b>Ieva Margeviča</b>  Tel. +371 67034014  E-mail: <a href="mailto:ieva.margevica@lu.lv">ieva.margevica@lu.lv</a></p>
<b>Website:</b>	<a href="http://www.lu.lv/eng/">http://www.lu.lv/eng/</a> <a href="http://www.lu.lv/eng/studies/english/educational_treatment.html">http://www.lu.lv/eng/studies/english/educational_treatment.html</a>

## International Finance and Banking



<b>Type:</b>	Complete study programme
<b>Degree to be obtained:</b>	Master
<b>Length:</b>	1 year and 5 months or 2 years and 5 months
<b>Language:</b>	English
<b>Short description of the programme:</b>	The programme prepares qualified specialists for work in the fields of investment management and modelling, finance and banking, insurance, investigation research and innovation. Graduates will be able to work in leading managing positions in local and international corporations. The Study Programme is oriented towards international business aspects, and is tailored for leading specialists of mentioned fields, top-class managers, entrepreneurs, perspective and talented employees and all interested persons willing to improve their professional knowledge.
<b>Fee (for the whole programme):</b>	8000 EUR / 5622 LVL / 11738 USD with previous professional experience or 8625 EUR / 6062 LVL / 12655 USD without professional experience
<b>Scholarship possibilities:</b>	Can be different every year, further information upon request.
<b>Requirements:</b>	<ul style="list-style-type: none"> <li>• Bachelor's degree or 2nd level higher professional education with qualification in Economics, Finance or Management – 1 year and 5 months</li> <li>• Bachelor's academic degree in Economics, Finance or Management – 2 years</li> <li>• All applicants must present documents proving their English proficiency. The document verifying the Test of English must be submitted. We accept TOEFL test, IELTS test with a score of at least 6.5</li> </ul> <p>To apply for admission to the programmes you must provide documents testifying that you have completed, or will complete, a relevant undergraduate degree in e.g. economics, commerce or business administration. The degree must have been conferred by an internationally accredited college or university. Other relevant degrees may come into consideration.</p>
<b>Accommodation possibilities and costs:</b>	BA School of Business and Finance will guide the students in applying for accommodation in Riga. If you are accepted to the programme, you will receive more information upon request. Average accommodation cost per month is 200 EUR / 140 LVL / 293 USD.
<b>Contact information:</b>	<b>BA School of Business and Finance</b> Kr. Valdemāra iela 161, Riga, LV-1013, Latvia Contact person – <b>Tatjana Mavrenko</b> (Programme Director) Tel: +371 26532939 Fax: +371 67320620 E-mail: Tatjana.mavrenko@ba.lv.
<b>Website:</b>	<a href="http://www.ba.lv/eng/studies/study_programmes/study_courses/">http://www.ba.lv/eng/studies/study_programmes/study_courses/</a>
<b>Additional information:</b>	<p>This programme is the best choice for everyone who considers international high-quality education as a kind of high profit investment in yourself or your employees.</p> <p><b>Orientation</b> of the study process to <b>the needs of working students</b> means that students can study and remain at their job in the professional field. Courses are planned one per month with <b>optimal number of contact hours</b> – two evenings (Thursday and Friday), one Saturday and one Sunday per month. Students use <b>one core text book</b> for the whole course and enjoy <b>flexible schedule of practical works</b> (submission of practical works and additional consultations - electronically).</p>

## Creative Industries Management

<b>Type:</b>	Complete study programme
<b>Degree to be obtained:</b>	Master
<b>Length:</b>	1 year and 5 months or 2 years and 5 months
<b>Language:</b>	English
<b>Short description of the programme:</b>	<ul style="list-style-type: none"> <li>• To develop highly qualified creative industries managers, able to inspire product creation with a high added value</li> <li>• To promote the development of leader's creative personality for entrepreneurship and business management</li> <li>• To develop holistic comprehension of creative industries management, their economic, social, psychological and technological aspects, environment, tendencies and profile</li> <li>• To promote enterprise start-ups in creative industries, their activity improvement, and development of innovative products and ideas with a high added value</li> <li>• To provide students with the opportunity to study and acquire professional experience from creative personalities and to consult highly qualified, experienced, world-known lecturers in the business</li> </ul>
<b>Fee (for the whole programme):</b>	9000 EUR / 6325 LVL / 13205 USD with professional experience or 9625 EUR / 6764 LVL / 14122 USD without professional experience
<b>Requirements:</b>	All applicants must present documents proving their English proficiency. This is done by submitting an English test. We accept TOEFL test, IELTS test with a score of at least 6.5. To apply for admission to the programmes you must provide documentation testifying that you have completed, or will complete, a relevant undergraduate degree in for instance economics, commerce or business administration. The degree must have been conferred by an internationally accredited college or university. Other relevant degrees may come into consideration.
<b>Accommodation possibilities and costs:</b>	BA School of Business and Finance will guide the students in applying for accommodation in Riga. If you are accepted to the programme, you will receive more information upon request. Average accommodation cost per month is 200 EUR / 140 LVL / 293 USD.
<b>Contact information:</b>	<b>BA School of Business and Finance</b> Kr. Valdemāra iela 161, Riga, LV-1013, Latvia Contact person – <b>Dita Danosa</b> (Programme Director) Tel.: +371 29266332 Fax: +371 67320620 E-mail: Dita.Danosa@ba.lv
<b>Website:</b>	<a href="http://www.ba.lv/eng/studies/study_programmes/">http://www.ba.lv/eng/studies/study_programmes/</a>

## Finance

<b>Type:</b>	Complete study programme
<b>Degree to be obtained:</b>	Professional Bachelor
<b>Length:</b>	4 years
<b>Language:</b>	English
<b>Short description of the programme:</b>	<p>This study programme is designed to prepare analytically-minded financial economists who are able to professionally and systemically apply financial analysis and management methods in an ever changing global environment, seeking financial stability, growth of economy and effectiveness.</p> <p>Study programme advantages:</p> <ul style="list-style-type: none"> <li>• Selected lecturers will deliver high-quality modern theoretical and practical knowledge</li> <li>• Professionally-oriented courses</li> <li>• Highly experienced professors and professionals</li> <li>• Experience in leading credit institutions, finance enterprises and audit companies in Latvia and abroad</li> <li>• Studies and life in multicultural environment</li> </ul>
<b>Fee (for the whole programme):</b>	14997 EUR / 10540 LVL / 22004 USD
<b>Requirements:</b>	All applicants must present documents proving their English proficiency. This is done by submitting an English test. We accept TOEFL test, IELTS test with a score of at least 6.5.
<b>Accommodation possibilities and costs:</b>	BA School of Business and Finance will guide the students in applying for accommodation in Riga. If you are accepted to the programme, you will receive more information about it upon request. Average accommodation cost per month is 200 EUR / 140 LVL / 293 USD.
<b>Contact information:</b>	<p><b>BA School of Business and Finance</b>  Kr. Valdemāra iela 161, Riga, LV-1013, Latvia  Contact person – <b>Gunta Innuse</b> (Programme Director)  Tel.: +371 67709294  Fax: +371 67320620  E-mail: Gunta.Innuse@ba.lv</p>
<b>Website:</b>	<a href="http://www.ba.lv/eng/studies/study_programmes/">http://www.ba.lv/eng/studies/study_programmes/</a>



## Maritime Transport Department

### Marine Transport – Navigation



<b>Type:</b>	Complete study programme
<b>Degree to be obtained:</b>	Bachelor
<b>Length:</b>	4 years and 3 months
<b>Language:</b>	English
<b>Short description of the programme:</b>	Diploma of Professional BSc in Marine Transport. This programme is in compliance with the requirements of the International Convention STCW-78/95 "Standards of Training, Certification and Watchkeeping". Main subjects include: Maritime English, Navigation, Celestial Navigation, Ship Construction and Theory, Marine Communications, Maritime Law, Maritime Safety, Marine Environment Pollution Protection, Ship Technical Management and others. Seagoing practice for duration of 12 months is included in the programme. The programme enables graduates to qualify as Ship Deck Officers at the management level without any restrictions of tonnage and sailing area. In the further development of career it is very likely to qualify for marine super-intendent's position in shipping or ship management companies.
<b>Fee per year:</b>	4747 EUR / 3336 LVL / 6965 USD
<b>Scholarship possibilities:</b>	Erasmus (for EU students)
<b>Requirements:</b>	<ul style="list-style-type: none"> <li>• Secondary education</li> <li>• TOEFL, IELTS or local English language test (for non EU)</li> </ul>
<b>Accommodation possibilities and costs:</b>	LMA can offer student dormitories; costs do not exceed 100 EUR / 70 LVL / 146 USD per month.
<b>Contact information:</b>	<b>Latvian Maritime Academy</b> Flotes iela 5B, Riga, LV-1016, Latvia Contact persons: <b>Gunārs Šteinerts</b> (Director of Maritime Transport Department) Tel.: +371 67161126 E-mail: steinerts@latja.lv <b>Nora Ārgale</b> (International Coordinator) Tel.: +371 67161125; Fax: +371 67830138 E-mail: nora.argale@latja.lv
<b>Website:</b>	www.latja.lv
<b>Additional information:</b>	The programme can be taught in English only if a group of foreign students applies.

## Port and Shipping Management



<b>Type:</b>	Complete study programme
<b>Degree to be obtained:</b>	Bachelor
<b>Length:</b>	4 years
<b>Language:</b>	English
<b>Short description of the programme:</b>	Diploma of Professional BSc in Management and Administration. This programme includes one seagoing practice and 2 shore-based practices in ports. Main subjects include: Economics, Statistics, Maritime English, Port Engineering, Port Structures, Port and Terminal Operations, Marine Transportation Technology, Multi-modal Transport, Logistics, International Business Strategy, Maritime Law, Port Operations and Planning. Graduates can work as managers in port and shipping companies.
<b>Fee per year:</b>	4747 EUR / 3336 LVL / 6965 USD
<b>Scholarship possibilities:</b>	Erasmus (for EU students)
<b>Requirements:</b>	<ul style="list-style-type: none"> <li>• Secondary education</li> <li>• TOEFL, IELTS or local English language test (for non EU)</li> </ul>
<b>Accommodation possibilities and costs:</b>	LMA can offer student dormitories; costs do not exceed 100 EUR / 70 LVL / 146 USD per month.
<b>Contact information:</b>	<p><b>Latvian Maritime Academy</b>            Flotes iela 5B, Rīga, LV-1016, Latvia            Contact persons:  <b>Gunārs Šteinerts</b> (Director of Maritime Transport Department)            Tel.: +371 67161126            E-mail: steinerts@latja.lv  <b>Nora Ārgale</b> (International Coordinator)            Tel.: +371 67161125; Fax: +371 67830138            E-mail: nora.argale@latja.lv</p>
<b>Website:</b>	www.latja.lv
<b>Additional information:</b>	The programme can be taught in English only if a group of foreign students applies.

## Marine Transportation and Operations

<b>Type:</b>	Complete study programme
<b>Degree to be obtained:</b>	Master
<b>Length:</b>	1 year and 5 months (full-time) or 3 years (part-time)
<b>Language:</b>	English
<b>Short description of the programme:</b>	<p>The course aims to develop highly qualified creative managers for marine transportation and logistics. Programme develops presentation and communication skills by means of seminars where students discuss and analyze the latest developments and tendencies in marine transportation. The Course encourages students to develop research skills on a topic of special interest for their Master's thesis.</p> <p>Main study areas: Research Methodology, Quality Management, Information Technology, Management, Transport Economics and Finance, Pedagogy (general), Psychology.</p>
<b>Fee per year:</b>	6750 EUR / 4744 LVL/ 9904 USD
<b>Requirements:</b>	Course is designed for postgraduate students with Professional BSc qualifications, professional higher education or professional qualification (at the 5th level) or equivalent.
<b>Accommodation possibilities and costs:</b>	LMA can offer student dormitories; costs do not exceed 100 EUR / 70 LVL / 146 USD per month.
<b>Contact information:</b>	<p><b>Latvian Maritime Academy</b>          Flotes iela 5B, Riga, LV-1016, Latvia          Contact persons:  <b>Valdis Priednieks</b> (Head of the Science Department)          Tel.: +371 67161114          E-mail: valdis.priednieks@latja.lv;  <b>Nora Ārgale</b> (International coordinator)          Tel.: +371 67161125. Fax: +371 67830138          E-mail: nora.argale@latja.lv</p>
<b>Website:</b>	www.latja.lv
<b>Additional information:</b>	An individual study plan can be created for foreign students.





## Marine Engineering Department

### Marine Engineering



<b>Type:</b>	Complete study programme
<b>Degree to be obtained:</b>	Professional Bachelor
<b>Length:</b>	4 years
<b>Language:</b>	English
<b>Short description of the programme:</b>	<p>Diploma of Professional BSc in Marine Engineering. This programme is in compliance with the requirements of the International Convention STCW-78/95 "Standards of Training, Certification and Watchkeeping".</p> <p>The programme enables graduates to qualify as Ship Engineer Officers at the management level without any restrictions of tonnage and propulsion. In the further development of career it is very likely to qualify for marine super-intendant's position in shipping or ship management companies.</p>
<b>Fee per year:</b>	4747 EUR / 3336 LVL / 6965 USD
<b>Scholarship possibilities:</b>	Erasmus (for EU students)
<b>Requirements:</b>	<ul style="list-style-type: none"> <li>• Secondary education</li> <li>• TOEFL, IELTS or local English language test (for non EU)</li> </ul>
<b>Accommodation possibilities and costs:</b>	LMA can offer student dormitories; costs do not exceed 100 EUR / 70 LVL / 146 USD per month.
<b>Contact information:</b>	<p><b>Latvian Maritime Academy</b>          Flotes iela 5B, Riga, LV-1016, Latvia          Contact person:  <b>Gundis Lauža</b> (Head of the Programme)          Tel.: +371 29411129          E-mail: gundis@latnet.lv  <b>Nora Ārgale</b> (International Coordinator)          Tel.: +371 67161125; Fax: +371 67830138          E-mail: nora.argale@latja.lv</p>
<b>Website:</b>	www.latja.lv
<b>Additional information:</b>	The programme can be taught in English only if a group of foreign students applies.

## Marine Electrical Automation



<b>Type:</b>	Complete study programme
<b>Degree to be obtained:</b>	Bachelor
<b>Length:</b>	4 years
<b>Language:</b>	English
<b>Short description of the programme:</b>	<p>Diploma of Professional BSc in Marine Electronic Engineering. This program is in compliance with the requirements of the International Convention STCW-78/95 "Standards of Training, Certification and Watchkeeping". Main subjects include: Electric Circuits, Electrical Machines, Electronics, Control Theory, Ship Propulsion and Electrical Installations, Maritime English, Ship Construction, Maintenance and Repair of Marine Machinery, Marine Environment Pollution Protection.</p> <p>The programme enables graduates to qualify as Ship Electro-Mechanical Engineer Officer, Ship Electrical or Electronics and Automation Engineer as well as Ship Engineer Officer at operational level.</p> <p>The graduates have also excellent carrier chances at shore.</p>
<b>Fee per year:</b>	4747 EUR / 3336 LVL / 6965 USD
<b>Scholarship possibilities:</b>	Erasmus (for EU students)
<b>Requirements:</b>	<ul style="list-style-type: none"> <li>• Secondary education</li> <li>• TOEFL, IELTS or local English language test (for non EU)</li> </ul>
<b>Accommodation possibilities and costs:</b>	LMA can offer student dormitories; costs do not exceed 100 EUR / 70 LVL / 146 USD per month.
<b>Contact information:</b>	<p><b>Latvian Maritime Academy</b>            Flotes iela 5B, Riga, LV-1016, Latvia            Contact persons:  <b>Gundis Lauža</b> (Head of the Programme)            Tel.: +371 29411129            E-mail: gundis@latnet.lv  <b>Nora Ārgale</b> (International Coordinator)            Tel.: +371 67161125; Fax: +371 67830138            E-mail: nora.argale@latja.lv</p>
<b>Website:</b>	www.latja.lv
<b>Additional information:</b>	The programme can be taught in English only if a group of foreign students applies.

## Faculty of Pedagogy

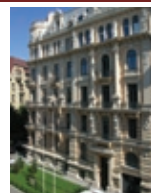
### Interpreter Assistant



<b>Type:</b>	Complete study programme / Separate courses
<b>Degree to be obtained:</b>	Bachelor
<b>Length:</b>	4 years
<b>Language:</b>	English, German
<b>Short description of the programme:</b>	<p>The focus of the programme is translation and interpreting for office needs. The main subjects include translation and interpreting in the following language combinations: English-Latvian-German/Russian or German-Latvian-English/Russian. The study program consists of 3 parts: A – general courses, B – field theoretical and professional specialization courses, C – elective courses. Part A of the study programme includes Translation Theory, Contrastive Linguistics as well as other courses of theoretical studies. Part B consists of interpreter assistant's professional specialization courses: Translation of Special Texts, Consecutive Interpreting, Office Work, etc. Part C consists of the study courses offered by both Foreign Languages Department and other departments of RHEI to improve interpreter assistant's proficiency. The strategy of the study programme is directed so that the interpreter assistant is able not only to translate and interpret professionally but also recognize cultural differences and communicate. After graduating from the programme the students will be able to work in public and private sector as translators, interpreters and assistants.</p>
<b>Fee per year: (for EU / non-EU students)</b>	1209 or 3700 EUR / 850 or 2600 LVL / 1774 or 5429 USD
<b>Requirements:</b>	General Certificate of Secondary Education
<b>Accommodation possibilities and costs:</b>	Dormitory 85 EUR / 60 LVL / 125 USD per month.
<b>Contact information:</b>	<p><b>Rēzekne Higher Education Institution</b>  Faculty of Pedagogy, Foreign Languages Department  Atbrīvošanas aleja 115, Rēzekne, LV-4600, Latvia  Contact person – <b>Vija Pleiksne-Gutane</b>  Tel.: +371 26482492; +371 64624816  E-mail: vija_pleiksne@yahoo.com,  E-mail: vplei@inbox.lv</p>
<b>Website:</b>	www.ru.lv
<b>Additional information:</b>	<p>Advantages of the study programme:</p> <ul style="list-style-type: none"> <li>• Relatively small groups ensuring an individual approach to every student</li> <li>• Up-to-date computer software for translation (Trados)</li> <li>• Visiting lecturers and exchange programmes</li> <li>• An opportunity to study several foreign languages (the EU official languages)</li> <li>• An opportunity to participate in scientific conferences</li> </ul>

## Foreign Language Teacher

<b>Type:</b>	Complete study programme / Separate courses
<b>Degree to be obtained:</b>	Bachelor
<b>Length:</b>	4 years
<b>Language:</b>	English, German
<b>Short description of the programme:</b>	The focus of the program is preparation of foreign language teachers. The main subjects include Conversation, Grammar, Literature and Foreign Language Methodology in the following language combinations: English and German. The study programme consists of 3 parts: A – general courses, B – field theoretical and professional specialization courses, C – elective courses. Part A of the study programme includes General Didactics and Pedagogy, as well as other courses of theoretical studies. Part B consists of foreign language teacher's professional specialization courses: Foreign Literature, Text Analysis, Background Studies, etc. Part C consists of the study courses offered by both Foreign Languages Department and other departments of RHEI to improve foreign language teacher's proficiency. After graduating from the programme students will be able to work in education institutions of different kinds and levels as foreign language teachers.
<b>Fee per year: (for EU / non-EU students)</b>	1067 or 3700 EUR / 750 or 2600 LVL / 1566 or 5429 USD
<b>Requirements:</b>	General Certificate of Secondary Education
<b>Accommodation possibilities and costs:</b>	Dormitory 85 EUR / 60 LVL / 125 USD per month.
<b>Contact information:</b>	<b>Rēzekne Higher Education Institution</b> Faculty of Pedagogy, Foreign Languages Department Atbrīvošanas aleja 115, Rēzekne, LV-4600, Latvia Contact person – <b>Viktorija Baranova</b> Tel.: +371 26532739; +371 64624816 E-mail: Viktorija.Baranova@gmail.com
<b>Website:</b>	www.ru.lv
<b>Additional information:</b>	Advantages of the study programme: <ul style="list-style-type: none"> <li>• Relatively small groups ensuring an individual approach to every student</li> <li>• Visiting lecturers and exchange programs</li> <li>• An opportunity to study several foreign languages (the EU official languages)</li> <li>• An opportunity to participate in scientific conferences</li> </ul>



## International and European Law

<b>Type:</b>	Complete study programme
<b>Degree to be obtained:</b>	Master (LL.M)
<b>Length:</b>	1 or 2 years
<b>Language:</b>	English
<b>Short description of the programme:</b>	The programme in International and European Law offers a selection of courses from Public International Law and Human Rights, Transborder Commercial Law and European Union Law and Policy areas, allowing students to pursue their career plans in public institutions, International organisations or law offices. Each of the three tracks are also offered as a specialised master programme. The programme comprises a period of theoretical study and class work, followed by a Master's thesis. The teaching methodology is interactive and based on a mix of lectures and seminars.
<b>Fee per year: (for EU / non-EU students)</b>	5000 or 8000 EUR / 3514 or 5622 LVL / 7336 or 11738 USD
<b>Requirements:</b>	<p>The Master of International and European Law 1 year (academic) programme is open to persons with an undergraduate (equal to 4 years of studies) or graduate degree in law from any accredited university or institution of higher education, as well as students with an undergraduate or graduate degree deemed equivalent to legal education.</p> <p>The Master of International and European Law 2 year (professional) programme is open to persons with an undergraduate (equal to 3 years of studies) or graduate degree in law from any accredited university or institution of higher education.</p> <p>For applicants who are EU citizens, applications must be submitted no later than the stated deadline. After that date students will be considered for the next scheduled programme intake. The deadlines can be found on the website.</p> <p>For applicants who are non-EU citizens and must obtain a residency permit, applications must be submitted at least 50 calendar days prior to the stated programme application deadline.</p> <p>Applicants should submit the following documents:</p> <ol style="list-style-type: none"> <li>1. Application form.</li> <li>2. A certified copy of the diploma/degree and diploma/degree transcript with an English translation.</li> <li>3. Official results of English competency exams: TOEFL or IELTS not older than 3 years. The required minimum result is 500 points for TOEFL (for a computer test – 173; Internet based test – 61) and 6 for IELTS.</li> <li>4. A passport copy.</li> <li>5. Motivation letter.</li> <li>6. Two reference letters, one academic preferably from your last degree course.</li> </ol>
<b>Accommodation possibilities and costs:</b>	RGSL does not have its own dormitory, but offers guidance in finding an accommodation.
<b>Contact information:</b>	<p><b>Riga Graduate School of Law</b>          Strēlnieku iela 4k-2, Riga, LV-1010, Latvia          Contact person – <b>Anda Lesina</b> (Head of Study Department)          Tel. + 371 67039206          E-mail: study@rgsl.edu.lv</p>
<b>Website:</b>	www.rgsl.edu.lv

## Public International Law and Human Rights

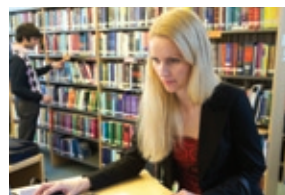


<b>Type:</b>	Complete study programme
<b>Degree to be obtained:</b>	Master (LL.M)
<b>Length:</b>	1 year
<b>Language:</b>	English
<b>Short description of the programme:</b>	The Public International Law and Human Rights programme is aimed at students interested in working with international public law issues, including human rights, in a national or international environment. It offers in-depth studies in fundamental issues of public international law and human rights law, the interaction between the two areas of law, and in current trends of their development. The programme comprises a period of theoretical study and class work, followed by a Master's thesis. The teaching methodology is interactive and based on a mix of lectures and seminars.
<b>Fee per year: (for EU / non-EU students)</b>	6000 or 8000 EUR / 4217 or 5622 LVL / 8803 or 11738 USD
<b>Requirements:</b>	<p>The Public International Law and Human Rights (LL.M) academic programme is open to individuals with an undergraduate or graduate Law degree from any accredited university or institution of higher education, as well as students with an undergraduate or graduate degree considered equivalent to an education necessary to undertake studies at RGSL.</p> <p>For applicants who are EU citizens, applications must be submitted no later than the stated deadline. After that date students will be considered for the next scheduled programme intake. The deadlines can be found on the website.</p> <p>For applicants who are non-EU citizens and must obtain a residency permit, applications must be submitted at least 50 calendar days prior to the stated programme application deadline.</p> <p>Applicants should submit the following documents:</p> <ol style="list-style-type: none"> <li>1. Application form.</li> <li>2. A certified copy of the diploma/degree and diploma/degree transcript with an English translation.</li> <li>3. Official results of English competency exams: TOEFL or IELTS not older than 3 years. The required minimum result is 500 points for TOEFL (for a computer test -173; Internet based test - 61) and 6 for IELTS.</li> <li>4. A passport copy.</li> <li>5. Motivation letter.</li> <li>6. Two reference letters, one academic preferably from your last degree course.</li> </ol>
<b>Accommodation possibilities and costs:</b>	RGSL does not have its own dormitory, but offers guidance in finding an accommodation.
<b>Contact information:</b>	<p><b>Riga Graduate School of Law</b>  Strēlnieku iela 4k-2, Riga, LV-1010, Latvia  Contact person – <b>Anda Lesina</b> (Head of Study Department)  Tel. + 371 67039206  E-mail: study@rgsl.edu.lv</p>
<b>Website:</b>	www.rgsl.edu.lv

## Transborder Commercial Law



<b>Type:</b>	Complete study programme
<b>Degree to be obtained:</b>	Master (LL.M)
<b>Length:</b>	1 year
<b>Language:</b>	English
<b>Short description of the programme:</b>	The programme is designed to focus on practical aspects of transborder trade within the European Union and on international conditions framing European Union trade. It is designed to meet the needs of lawyers working in the private sector. The programme comprises a period of theoretical study and class work, followed by a Master's thesis. The teaching methodology is interactive and based on a mix of lectures and seminars.
<b>Fee per year: (for EU / non-EU students)</b>	6000 or 8000 EUR / 4217 or 5622 LVL / 8803 USD or 11738 USD
<b>Requirements:</b>	<p>The Transborder Commercial Law academic programme is open to individuals with an undergraduate or graduate Law degree from any accredited university or institution of higher education, as well as students with an undergraduate or graduate degree considered equivalent to an education necessary to undertake studies at RGSL. For applicants who are EU citizens, applications must be submitted no later than the stated deadline. After that date students will be considered for the next scheduled programme intake. The deadlines can be found on the website. For applicants who are non-EU citizens and must obtain a residency permit, applications must be submitted at least 50 calendar days prior to the stated programme application deadline.</p> <p>Applicants should submit the following documents:</p> <ol style="list-style-type: none"> <li>1. Application form.</li> <li>2. A certified copy of the diploma/degree and diploma/degree transcript with an English translation.</li> <li>3. Official results of English competency exams: TOEFL or IELTS not older than 3 years. The required minimum result is 500 points for TOEFL (for a computer test -173; Internet based test - 61) and 6 for IELTS.</li> <li>4. A passport copy.</li> <li>5. Motivation letter.</li> <li>6. Two reference letters, one academic preferably from your last degree course.</li> </ol>
<b>Accommodation possibilities and costs:</b>	RGSL does not have its own dormitory, but offers guidance in finding an accommodation.
<b>Contact information:</b>	<p><b>Riga Graduate School of Law</b>  Strēlnieku iela 4k-2, Riga, LV-1010, Latvia  Contact person – <b>Anda Lesina</b> (Head of Study Department)  Tel. + 371 67039206  E-mail: study@rgsl.edu.lv</p>
<b>Website:</b>	www.rgsl.edu.lv



## European Union Law and Policy

<b>Type:</b>	Complete study programme
<b>Degree to be obtained:</b>	Master (MA)
<b>Length:</b>	1 year
<b>Language:</b>	English
<b>Short description of the programme:</b>	The programme is designed to promote highly qualified experts with theoretical knowledge of both European Union law and policy issues. It covers integration, the role of the European Court of Justice, selected aspects under the second and third pillars, as well as policy implementation and negotiation. The programme comprises a period of theoretical study and class work, followed by a Master's thesis. The teaching methodology is interactive and based on a mix of lectures and seminars.
<b>Fee per year: (for EU / non-EU students)</b>	6000 or 8000 EUR /4217 or 5622 LVL /8803 or 11738 USD
<b>Requirements:</b>	<p>The European Union Law and Policy academic programme is open to individuals with an undergraduate or graduate degree in Social Sciences from any accredited university or institution of higher education, as well as students with an undergraduate or graduate degree considered equivalent to an education necessary to undertake studies at RGSL. For applicants who are EU citizens, applications must be submitted no later than the stated deadline. After that date students will be considered for the next scheduled programme intake. The deadlines can be found on the website.</p> <p>For applicants who are non-EU citizens and must obtain a residency permit, applications must be submitted at least 50 calendar days prior to the stated programme application deadline.</p> <p>Applicants should submit the following documents:</p> <ol style="list-style-type: none"> <li>1. Application form.</li> <li>2. A certified copy of the diploma/degree and diploma/degree transcript with an English translation.</li> <li>3. Official results of English competency exams: TOEFL or IELTS not older than 3 years. The required minimum result is 500 points for TOEFL (for a computer test -173; Internet based test - 61) and 6 for IELTS.</li> <li>4. A passport copy.</li> <li>5. Motivation letter.</li> <li>6. Two reference letters, one academic preferably from your last degree course.</li> </ol>
<b>Accommodation possibilities and costs:</b>	RGSL does not have its own dormitory, but offers guidance in finding an accommodation.
<b>Contact information:</b>	<p><b>Riga Graduate School of Law</b>          Strēlnieku iela 4k-2, Riga, LV-1010, Latvia          Contact person – <b>Anda Lesina</b> (Head of Study Department)          Tel. + 371 67039206          E-mail: study@rgsl.edu.lv</p>
<b>Website:</b>	www.rgsl.edu.lv





## Law and Finance

<b>Type:</b>	Complete study programme
<b>Degree to be obtained:</b>	Master (LL.M)
<b>Length:</b>	1 or 2 years
<b>Language:</b>	English
<b>Short description of the programme:</b>	<p>The programme in Law and Finance is one of a handful of interdisciplinary programmes within the area of Law and Finance in Europe. The programme aims to arm students who require an understanding of finance and law necessary for dealing with an ever-changing global economic climate and creative and complex laws. Students will gain competence in European Law, Corporate Finance, Monetary Policy and Micro and Macro Economics to name a few. In addition they will gain in-depth knowledge in the areas of Competition Law, Insolvency Law, Company Law, Capital Dynamics and Portfolio Analysis to name a few. With a diverse international faculty comprising of leading scholars, practitioners and experts, students will gain a global, dynamic yet contemporary insight at the RGSL. Law and Finance graduates have undertaken careers in global markets, financial institutions, and government positions in the financial and legal regulatory area. The teaching methodology is interactive and based on a mix of lectures and seminars.</p>
<b>Fee per year:</b>	8000 EUR / 5622 LVL / 11738 USD
<b>Requirements:</b>	<p>The Master of Law and Finance academic programme is open to persons with an undergraduate or graduate degree in law, business, finance or economics from any accredited university or institution of higher education.</p> <p>For applicants who are EU citizens, applications must be submitted no later than the stated deadline. After that date students will be considered for the next scheduled programme intake. The deadlines can be found on the website.</p> <p>For applicants who are non-EU citizens and must obtain a residency permit, applications must be submitted at least 50 calendar days prior to the stated programme application deadline.</p> <p>Applicants should submit the following documents:</p> <ol style="list-style-type: none"> <li>1. Application form.</li> <li>2. A certified copy of the diploma/degree and diploma/degree transcript with an English translation.</li> <li>3. Official results of English competency exams: TOEFL or IELTS not older than 3 years. The required minimum result is 500 points for TOEFL (for a computer test - 173; Internet based test - 61) and 6 for IELTS.</li> <li>4. A passport copy.</li> <li>5. Motivation letter.</li> <li>6. Two reference letters, one academic preferably from your last degree course.</li> </ol>
<b>Accommodation possibilities and costs:</b>	RGSL does not have its own dormitory, but offers guidance in finding an accommodation.
<b>Contact information:</b>	<p><b>Riga Graduate School of Law</b>          Strēlnieku iela 4k-2, Riga, LV-1010, Latvia          Contact person – <b>Anda Lesina</b> (Head of Study Department)          Tel. + 371 67039206          E-mail: study@rgsl.edu.lv</p>
<b>Website:</b>	www.rgsl.edu.lv



## Legal Linguistics

<b>Type:</b>	Complete study programme
<b>Degree to be obtained:</b>	Master (MA)
<b>Length:</b>	1 year
<b>Language:</b>	English
<b>Short description of the programme:</b>	<p>The programme is designed as an interdisciplinary programme, covering a range of legal and linguistic skills useful for lawyers and language specialists working with legal texts. The programme is intended for students who are interested in pursuing their professional carriers in international organisations, private law firms and public authorities. The international faculty comprising of leading scholars, practitioners and experts offers in-depth studies of Comparative Law and Legal Linguistics, Legislative Drafting, Legal Translation and other areas essential for creating, interpreting, translating and editing of legal texts. The interdisciplinary approach allows development of comparative legal and linguistic analysis skills in national, multilingual and international contexts. The teaching methodology is interactive and based on a mix of lectures and seminars.</p>
<b>Fee per year:</b>	5000 EUR / 3514 LVL / 7336 USD
<b>Requirements:</b>	<p>The Master of Legal Linguistics academic programme is open to persons with an undergraduate or graduate degree in law, philology, or equivalent from any accredited university or institution of higher education.</p> <p>For applicants who are EU citizens, applications must be submitted no later than the stated deadline. After that date students will be considered for the next scheduled programme intake. The deadlines can be found on the website.</p> <p>For applicants who are non-EU citizens and must obtain a residency permit, applications must be submitted at least 50 calendar days prior to the stated programme application deadline.</p> <p>Applicants should submit the following documents:</p> <ol style="list-style-type: none"> <li>1. Application form.</li> <li>2. A certified copy of the diploma/degree and diploma/degree transcript with an English translation.</li> <li>3. Official results of English competency exams: TOEFL or IELTS not older than 3 years. The required minimum result is 550 points for TOEFL (for a computer test - 213; Internet based test – 79-80) and 6.5 for IELTS.</li> <li>4. A passport copy.</li> <li>5. Motivation letter.</li> <li>6. Two reference letters, one academic preferably from your last degree course.</li> </ol>
<b>Accommodation possibilities and costs:</b>	RGSL does not have its own dormitory, but offers guidance in finding an accommodation.
<b>Contact information:</b>	<p><b>Riga Graduate School of Law</b>  Strēlnieku iela 4k-2, Riga, LV-1010, Latvia  Contact person – <b>Anda Lesina</b> (Head of Study Department)  Tel. + 371 67039206  E-mail: study@rgsl.edu.lv</p>
<b>Website:</b>	www.rgsl.edu.lv



## Executive Master of Business Administration

<b>Type:</b>	Part-time/module based programme
<b>Degree to be obtained:</b>	Master
<b>Length:</b>	2 years
<b>Language:</b>	English
<b>Short description of the programme:</b>	<p>The Programme offers a state-of-the-art education that will provide students with knowledge, analytical skills, confidence and language to add value to their career development, their organizations and the community. The EMBA classes are comprised of maximum 25 students with various academic and professional backgrounds.</p> <p>The Programme is designed to allow students to balance career, family and studies during the two years of EMBA studies. The class meets once a month for 4 days module led by the international faculty members. In addition to 15 modules which comprise Global Economics, Marketing, Financial Economics, E-strategies, other courses, the Programme includes a transcontinental study trip and Diploma Project.</p> <p>As an SSE Riga Alumna/Alumnus the graduate will join the network of SSE Riga Alumni and the even wider network of Stockholm School of Economics Alumni – an extensive network of more than 12,000 graduates in leading positions in business and government.</p>
<b>Fee:</b>	EUR 21500 / 15110 LVL / 31545 USD (if paid in one installment) or EUR 24000 / 16867 LVL / 35214 USD (if paid up to four installments)
<b>Requirements:</b>	<ul style="list-style-type: none"> <li>• First degree i.e. Bachelor or similar degree in any area</li> <li>• At least five years experience in managerial position</li> <li>• Knowledge of English which is tested during an interview</li> </ul>
<b>Accommodation possibilities and costs:</b>	<p>SSE Riga can offer a place in the school's dormitory: twin rooms with two residence units (two single beds) and triple rooms with three residence units (three single beds) can be offered. The price varies from 80 – 100 EUR / 56 – 70 LVL / 117 – 147 USD per month.</p> <p>The dormitory is situated in the distance of about 20 minutes bus ride from SSE Riga. Location of SSE Riga dormitory: Patversmes iela 22, Riga</p>
<b>Contact information:</b>	<p><b>Stockholm School of Economics in Riga</b>  Strēlnieku iela 4a, Riga, LV-1010, Latvia  Contact person – Dr. <b>Karlis Kreslins</b> (Executive MBA Programme Director)  Tel.: +371 67015816  E-mail: KarlisK@sseriga.edu.lv</p>
<b>Website:</b>	<a href="http://www.sseriga.edu.lv">http://www.sseriga.edu.lv</a>
<b>Additional information:</b>	SSE Riga is the best Business School in the Baltic region according to Financial Times Ranking of Top European Business Schools in 2008.

## BSc Programme in Economics and Business

<b>Type:</b>	Complete study programme
<b>Degree to be obtained:</b>	Bachelor of Science (B.Sc.)
<b>Length:</b>	Full-time studies – 3 years
<b>Language:</b>	English
<b>Short description of the programme:</b>	B.Sc. in Economics and Business is designed as a three-year programme consisting of 6 semesters. The programme covers such areas as economics, finance, accounting, management, organizational behaviour, and strategy. A range of elective courses is offered in social sciences, humanities and of general interest. The overall teaching method at SSE Riga is very intensive and interactive, and involves lectures, seminars, case-studies, assignments, project works and internships. Written examinations are passed in each course.
<b>Fee per year:</b>	2200 EUR / 1546 LVL / 3228 USD
<b>Requirements:</b>	<ol style="list-style-type: none"> <li>1. Upper secondary education completed by July 2010 or earlier</li> <li>2. State examination results in Mathematics and English * <ul style="list-style-type: none"> <li>* Applicants who are residents of Estonia, Latvia and Lithuania and who completed their upper secondary education prior to 2005, and for applicants who completed their upper secondary education in a country other than Estonia, Latvia and Lithuania, do not have to present state examination results in Mathematics and English to be eligible to apply. Applicants in this group have to submit a certified copy of upper secondary education grade transcript and a copy of the photo page of his/her passport</li> </ul> </li> <li>3. English language skills</li> </ol> <p>On-line application form will be available at <a href="http://www.sseriga.edu.lv">www.sseriga.edu.lv</a> from February, 2010. Deadline for submission of the on-line application is early May, the exact date will be published on the school's web page.</p> <p><b>Admission procedure:</b> SSE Riga runs a three-step selection:</p> <ol style="list-style-type: none"> <li>1. Based on the state examination results (or secondary school certificates for non-Baltic students), top 400 applicants are invited to the entrance tests</li> <li>2. Logical aptitude test, English language tests and mathematics are taken early July. 200 of the top performing candidates are scheduled for interviews</li> <li>3. Candidates are interviewed and 120 top candidates are selected for matriculation</li> </ol>
<b>Accommodation possibilities and costs:</b>	<p>SSE Riga can offer a place in the school's dormitory: twin rooms with two residence units (two single beds) and triple rooms with three residence units (three single beds) can be offered. The price varies from 80 – 100 EUR / 56 – 70 LVL / 117 – 147 USD per month.</p> <p>The dormitory is situated in the distance of about 20 minutes bus ride from SSE Riga.</p> <p>Location of SSE Riga dormitory: Patversmes iela 22, Riga</p>
<b>Contact information:</b>	<p><b>Stockholm School of Economics in Riga</b>  Strēlnieku iela 4a, Riga, LV-1010, Latvia  Tel.: +371 67015800  Fax: + 371 67830249  E-mail: <a href="mailto:office@sseriga.edu.lv">office@sseriga.edu.lv</a>; <a href="mailto:admission@sseriga.edu.lv">admission@sseriga.edu.lv</a></p>
<b>Website:</b>	<a href="http://www.sseriga.edu.lv">http://www.sseriga.edu.lv</a>
<b>Additional information:</b>	SSE Riga is the best Business School in the Baltic region according to Financial Times Ranking of Top European Business Schools in 2008.

## Faculty of Translation/ Interpreting Studies

### Translation / Interpretation



<b>Type:</b>	Separate courses at Bachelor's level
<b>Length:</b>	5 months
<b>Language:</b>	English, French, German
<b>Short description of the programme:</b>	Study courses in different language and translation aspects; languages (English, German, French, Latvian, Russian) etc. The programme strives to develop the knowledge and skills to enable the individuals to independently ensure their own further professional growth, to manage the work of translators' teams on provision of sizeable translations, to use translation software programmes.
<b>Fee:</b>	The study courses are offered to EU students for free.
<b>Scholarship possibilities:</b>	Erasmus for EU students
<b>Requirements:</b>	The student of a relevant Bachelor level's programme
<b>Accommodation possibilities and costs:</b>	The hostel of university college. About 50 EUR / 35 LVL / 73 USD per month for EU students.
<b>Contact information:</b>	<b>Ventspils University College</b> Inženieru iela 101a, Ventspils, LV-3601, Latvia Tel: +371 63628303 Fax: +371 63629660 E-mail: international@venta.lv
<b>Website:</b>	<a href="http://www.venta.lv">www.venta.lv</a>

## Faculty of Economics and Management

### Business Administration



<b>Type:</b>	Study module at Bachelor's level
<b>Length:</b>	5 months
<b>Language:</b>	English
<b>Short description of the programme:</b>	The study module corresponds to 30 ECTS (or 20 Latvian credit points). Study courses are related to different aspects of current business problems in the Baltic States and the Baltic Sea Region countries. Also different language courses (English, German, French) are included.
<b>Fee:</b>	The study module is offered to EU students for free.
<b>Scholarship possibilities:</b>	Erasmus for EU students
<b>Requirements:</b>	The student of a relevant Bachelor level's programme
<b>Accommodation possibilities and costs:</b>	The hostel of university college. About 50 EUR / 35 LVL / 73 USD per month for EU students.
<b>Contact information:</b>	<b>Ventspils University College</b> Inženieru iela 101a, Ventspils, LV-3601, Latvia Tel.: +371 63628303 Fax: +371 63629660 E-mail: international@venta.lv
<b>Website:</b>	<a href="http://www.venta.lv">www.venta.lv</a>

## Baltic International Summer School (BISS)



<b>Type:</b>	Summer school
<b>Degree to be obtained:</b>	Certificate for completing summer school courses
<b>Length:</b>	2 weeks
<b>Language:</b>	English
<b>Short description of the programme:</b>	Baltic International Summer School (BISS) is a two-week intensive summer programme for university and college students from all over the world. Besides lectures and workshops on the summer school subject, students also have an opportunity to learn the Latvian language, explore and discover Baltic states and make new friends. The programme also features a number of exciting field trips and social events. Every year the summer school has a different focus depending on the faculty which hosts the event.
<b>Fee:</b>	See information on the webpage <a href="http://biss.va.lv">http://biss.va.lv</a>
<b>Scholarship possibilities:</b>	A number of scholarships are available for the participants. For further information, see <a href="http://biss.va.lv">http://biss.va.lv</a>
<b>Requirements:</b>	<ul style="list-style-type: none"> <li>• At least a General Certificate of Secondary Education</li> <li>• English language competence</li> </ul>
<b>Accommodation possibilities and costs:</b>	Accommodation is offered for all the participants. The price for the accommodation is included in the summer school fee.
<b>Contact information:</b>	<b>Vidzeme University of Applied Sciences</b> Cēsu iela 4, Valmiera, LV-4201, Latvia Contact person – <b>Līga Tuča</b> Tel.: +371 64250853 E-mail: <a href="mailto:international@va.lv">international@va.lv</a> E-mail: <a href="mailto:infobiss@va.lv">infobiss@va.lv</a>
<b>Website:</b>	<a href="http://www.va.lv">http://www.va.lv</a> <a href="http://biss.va.lv">http://biss.va.lv</a>
<b>Additional information:</b>	Online application at <a href="http://biss.va.lv">http://biss.va.lv</a>



## Translation and Interpretation

<b>Type:</b>	Complete study programme
<b>Degree to be obtained:</b>	Professional Bachelor
<b>Length:</b>	4 years (8 semesters)
<b>Language:</b>	English, German, Spanish (as the second language)
<b>Short description of the programme:</b>	<p>Modern European education is oriented to multilingual work necessary for life in the multicultural world. The most actual type of translation is a trilingual translation which along with the European languages (English, German) claimed at the market of labour includes also the Latvian and Russian languages. Such translators work in publishing houses, in translating bureaus, in auction, production and tourist firms, on television, in newspapers and magazines, in courts; their services are used during conducting presentations.</p> <p><b>Main courses:</b> Introduction into Specialty; Latin Language; Modern Eng/Ger Language – System and Innovations, Functional Grammar, Stylistics in Translation Practice; Modern Lat/Rus Language System and Innovations, Functional Grammar, Stylistics in Translation Practice; Native Language; Translation Theory; Introduction into Simultaneous Translation. Options for the Proficient Knowledge of Discipline: Academic Writing; Eng/Ger Language: Urgent Problems of Language Use (phonetics, grammar, language communications); Communicative Practical Work and Terminology – 7 types (in cultural and tourism sphere, in PR and politic sphere, in economic and business sphere etc); Methodology of Translation and Professional Training; Modern Translation Technologies (TRADOS); Training of Professional Memory and Translation; Methodology of Logical Interpretation and Professional Training (Rus/Lat, Lat/Rus) etc.</p>
<b>Fee per semester:</b>	900 EUR / 633 LVL / 1321 USD
<b>Requirements:</b>	<ul style="list-style-type: none"> <li>• General Certificate of Secondary education</li> <li>• English at upper-intermediate level</li> </ul>
<b>Accommodation possibilities and costs:</b>	<p>Prices may vary depending on accommodation quality.</p> <p>Hostels – starting from 150 EUR / 105 LVL / 220 USD month per person.</p> <p>Renting (sharing) a flat could cost starting from 100 EUR / 70 LVL / 147 USD month per person.</p>
<b>Contact information:</b>	<p><b>Baltic International Academy</b>  Lomonosova iela 4 - 210, Riga, Latvia, LV-1003  Contact person – <b>Emma Arhangelskaya</b>  Tel.: + 371 29159781  E-mail: <a href="mailto:tulkosana@bsa.edu.lv">tulkosana@bsa.edu.lv</a></p>
<b>Website:</b>	<a href="http://www.bsa.edu.lv">www.bsa.edu.lv</a>



## European Business School

<b>Type:</b>	Complete study programme
<b>Degree to be obtained:</b>	Bachelor
<b>Length:</b>	4 years (8 semesters)
<b>Language:</b>	English
<b>Short description of the programme:</b>	<p>The joint programme "Baltic International Academy - group of European business schools (EBS)" is realized in the following countries: Great Britain, Ireland, Germany, France, Spain, Italy, Latvia, Russia, the USA. Two foreign languages (16 hours per week) are studied. A year of training in two countries in which higher education institutions of EBS group are located is included in the programme. The diploma "Economist - manager of the European business" (EBS) or diploma of Baltic International Academy is issued to the graduates.</p> <p>The international study programme includes such subjects as Microeconomics; management; marketing; finance; English and German languages; company skills management; business management; taxation management etc.</p>
<b>Fee per semester:</b>	1350 EUR / 949 LVL / 1981 USD
<b>Requirements:</b>	General Certificate of Secondary education
<b>Accommodation possibilities and costs:</b>	<p>Prices may vary depending on accommodation quality.</p> <p>Hostels – starting from 150 EUR / 105 LVL / 220 USD month per person.</p> <p>Renting (sharing) a flat could cost starting from 100 EUR / 70 LVL / 147 USD month per person.</p>
<b>Contact information:</b>	<p><b>Baltic International Academy</b>  Lomonosova iela 4, Riga, Latvia, LV-1003  Contact person – <b>Tatyana Golubkova</b>  Tel.: + 371 29142886  E-mail: ebsi-golubkova@inbox.lv</p>
<b>Website:</b>	<a href="http://www.bsa.edu.lv">www.bsa.edu.lv</a>

## European Studies

<b>Type:</b>	Complete study programme
<b>Degree to be obtained:</b>	Bachelor
<b>Length:</b>	4 years (8 semesters)
<b>Language:</b>	English
<b>Short description of the programme:</b>	<p>Specialists who are well oriented in development of political course of European Union, in a domestic and external policy, policy of safety, problems of integration and institutional development will be prepared.</p> <p>Such specialists can work in a Ministry of foreign affairs and other ministries, research institutes and departments of international relations of different organizations and commercial firms.</p> <p>Theory of Politics: Urgent Problems; Analysis of European Idea Development; Compulsory Politics Methodology; EU Politics and Decision-Making; EU, Globalization and Localization; EU Politic Economics of Integration, EU Constitutional Law; Analysis of EU-USA Relationships; Analysis of EU-Russia Relations; Analysis of EU-Eurasia Relations; Social Technologies of Society Management; Analysis of Macroeconomic Principles; Analysis of Microeconomic Principles.</p>
<b>Fee per semester:</b>	900 EUR / 633 LVL / 1321 USD
<b>Requirements:</b>	<ul style="list-style-type: none"> <li>• General Certificate of Secondary education</li> <li>• English at upper-intermediate level</li> </ul>
<b>Accommodation possibilities and costs:</b>	<p>Prices may vary depending on accommodation quality.</p> <p>Hostels – starting from 150 EUR / 105 LVL / 220 USD month per person.</p> <p>Renting (sharing) a flat could cost starting from 100 EUR / 70 LVL / 147 USD month per person.</p>
<b>Contact information:</b>	<p><b>Baltic International Academy</b>  Lomonosova iela 1/24 - 202, Riga, Latvia, LV-1003  Contact person – <b>Ilze Ostrovskā</b>  Tel.: 371 29216425  eiropasstudijas@bsa.edu.lv</p>
<b>Website:</b>	<a href="http://www.bsa.edu.lv">www.bsa.edu.lv</a>

## Business Administration

<b>Type:</b>	Complete study programme
<b>Degree to be obtained:</b>	Second level higher professional education
<b>Length:</b>	4 years (8 semesters)
<b>Language:</b>	English
<b>Short description of the programme:</b>	<p>The programme prepares middle management specialists with a European approach in a conduct and organization of business. Graduating students will acquire knowledge, skills and abilities for creation of business, or working or managing departments and services of enterprises in the area of finance, commerce, tourism, insurance, IT. Qualification – Manager of Entrepreneurship.</p> <p><b>Main courses:</b> Microeconomics; Professional Latvian Language; Professional English language; Logics; Law; Macroeconomics; Accounting Theory; Sociology; Social Psychology; Philosophy; Economics of Entrepreneurship; Management Theory; Marketing; Computer Science, Financial Bookkeeping; Managing Registration; Financial Analysis; Organization of Account Department; Audit; International Standards of Audit; Taxes and Taxation; Financial Risks; European Labor Law; Management of Investments; Prices and Price Formation; Transactions of Commercial Banks; Security Market; Foreign Tax Systems; World Economics; Financial Management, Ethics of Business; Business Correspondence; Rhetoric; Valuation of Company etc.</p>
<b>Fee per semester:</b>	1350 EUR / 949 LVL / 1981 USD
<b>Requirements:</b>	<ul style="list-style-type: none"> <li>• General Certificate of Secondary education</li> <li>• English at upper-intermediate level</li> </ul>
<b>Accommodation possibilities and costs:</b>	<p>Prices may vary depending on accommodation quality.</p> <p>Hostels – starting from 150 EUR / 105 LVL / 220 USD month per person.</p> <p>Renting (sharing) a flat could cost starting from 100 EUR / 70 LVL / 147 USD month per person.</p>
<b>Contact information:</b>	<p><b>Baltic International Academy</b>  English department  Lomonosova iela 4, Riga, Latvia, LV-1003  Contact person – <b>Inna Stecenko</b>  Tel.: + 371 67100645  E-mail: i.stecenko@apollo.lv</p>
<b>Website:</b>	<a href="http://www.bsa.edu.lv">www.bsa.edu.lv</a>

# Graduate School of Information Systems Management



## Business Administration

<b>Type:</b>	Complete study programme
<b>Degree to be obtained:</b>	Professional Bachelor
<b>Length:</b>	4 years (8 semesters)
<b>Language:</b>	English
<b>Short description of the programme:</b>	<p>Professional study programme. Entrepreneurship in conditions of market economy is the basis of the state economic development and the essential feature of a democratic society. At the same time, the key person of business is the modern manager, who is an expert in questions of management, economics, law and technological processes. His competence is based on profound professional knowledge in such areas as management theory, information technologies, personal management, finances etc. Qualification – Business Administrator.</p> <p>Specializations of the programme:          Business Administration, Computer Technologies' Management, Culture Management, Translator-Interpreter, Retail Enterprise Management, Law Business Activity Management, Hospitality Management, Project Management, Real Estate Management.</p>
<b>Fee per year:</b>	2100 EUR / 1476 LVL / 3081 USD
<b>Matriculation requirements:</b>	<ul style="list-style-type: none"> <li>• General Certificate of Secondary Education</li> <li>• Language test (English).</li> </ul>
<b>Accommodation possibilities and costs:</b>	<p>1) Renovated student residence right in front of the institute 150 EUR / 105 LVL / 220 USD per month</p> <p>2) Student residence close to the institute about 50 EUR / 35 LVL / 73 USD per month</p>
<b>Contact information:</b>	<p><b>Information Systems Management Institute</b>          International Relations Office          Ludzas iela 91, Rīga, LV-1003, Latvia          Contact person – <b>Olga Dyakon</b>          Tel.: +371 67218501          E-mail: erasmus@isma.lv</p>
<b>Website:</b>	www.isma.lv

# Tourism Management

<b>Type:</b>	Complete study programme
<b>Degree to be obtained:</b>	Professional Bachelor
<b>Length:</b>	4 years (8 semesters)
<b>Language:</b>	English
<b>Short description of the programme:</b>	<p>Tourism is one of the dynamically developing industries and the fastest growing markets in Latvia, Europe and worldwide with unlimited perspectives. The programme gives its share to the growing needs in highly qualified specialists as well as caters for young people's interests in getting a state-of-the-art education, ensuring them with a good advancement in professional growth and career. The graduates are capable of carrying out qualitative market research and providing effective development of tourism products in Latvia and abroad. They can take responsibility to run different organizations in tourism industry (travel agencies, hotels, restaurants, transport organizations, leisure and tourism information offices, tourism advertising companies). They can apply their knowledge in journalism.</p> <p>The curriculum comprises the study courses in:  Micro- and Macroeconomics, Management and Marketing, Finances and Banking, Accounting and Auditing, Commercial Law; Tourism Management, Recreology, Geography of Cultural Centres, Excursion Guiding, Travel Agency Management, Catering and Accommodation Industries; Fundamental Sciences (Economic Mathematics, Scientific Research Methodology, Philosophy; Information Technologies and Computer Sciences, Computerized Reservations System; Foreign Languages.</p> <p>Information Systems Management Institute has its own tourist club and a travel agency enabling the students to acquire the necessary practical skills.</p>
<b>Fee per year:</b>	2350 EUR / 1652 LVL / 3448 USD
<b>Matriculation requirements:</b>	<ul style="list-style-type: none"> <li>• General Certificate of Secondary Education</li> <li>• Language test (English)</li> </ul>
<b>Accommodation possibilities and costs:</b>	<p>1) Renovated student residence right in front of the institute 150 EUR / 105 LVL / 220 USD per month</p> <p>2) Student residence close to the institute about 50 EUR / 35 LVL / 73 USD per month</p>
<b>Contact information:</b>	<p><b>Information Systems Management Institute</b>  International Relations Office  Ludzas iela 91, Rīga, LV-1003, Latvia  Contact person – <b>Olga Dyakon</b>  Tel.: +371 67218501  E-mail: erasmus@isma.lv</p>
<b>Website:</b>	<a href="http://www.isma.lv">www.isma.lv</a>

# Information Systems

<b>Type:</b>	Complete study programme
<b>Degree to be obtained:</b>	Professional Bachelor
<b>Length:</b>	4 years (8 semesters)
<b>Language:</b>	English
<b>Short description of the programme:</b>	<p>The programme provides training for system analysts - programmers, able to tackle the advanced requests in the field of computer sciences. The programme includes a number of conceptually related courses in software analysis and practical programming. These courses contain a detailed study of personal computer architecture, computer hardware maintenance, theory of algorithms, discrete mathematics, programming in Assembler, programming of operational systems, programming in languages Visual BASIC, Visual Fortran, PASCAL, C++, object-oriented programming, programming of computer nets, computer systems design, data bases and software products design, means of system administration etc. Throughout the education process students are involved in the development of the applied software and the scientific and applied projects of the institute's experts, having a possibility to publish the results of investigations in the scientific journals issued by the institute.</p> <p>Specializations of the programme:  Administration of Computer Systems; Telecommunication Systems; Intellectual Education Systems; Applied Systems of Computer Modeling; WEB-Technologies; Applied Electronics Computing Systems.</p> <p>The system analyst is capable of designing and developing competitive software products necessary for the consumer, provide them with the necessary documentation and operational support. The balanced training of the specialists of a wide profile in various subject areas is the main essence of the ISMI study programme distinguishing it from similar study programmes.</p>
<b>Fee per year:</b>	2100 EUR / 1476 LVL / 3081 USD
<b>Matriculation requirements:</b>	<ul style="list-style-type: none"> <li>• General Certificate of Secondary Education</li> <li>• Language test (English)</li> </ul>
<b>Accommodation possibilities and costs:</b>	<p>1) Renovated student residence right in front of the institute 150 EUR / 105 LVL / 220 USD per month</p> <p>2) Student residence close to the institute about 50 EUR / 35 LVL / 73 USD per month</p>
<b>Contact information:</b>	<p><b>Information Systems Management Institute</b>  International Relations Office  Ludzas iela 91, Riga, LV-1003, Latvia  Contact person – <b>Olga Dyakon</b>  Tel.: +371 67218501  E-mail: erasmus@isma.lv</p>
<b>Website:</b>	www.isma.lv

## Business Administration

<b>Type:</b>	Complete study programme
<b>Degree to be obtained:</b>	Professional Master
<b>Length:</b>	2 years (4 terms)
<b>Language:</b>	English
<b>Short description of the programme:</b>	<p>High quality business and management education is one of the key factors, which provides dynamic development of countries, economical regions and global economy. The programme is aimed at creative persons. It is open to all constructive, new ideas and technologies. It pays much attention to students' further career development. It trains the highest level business administrators and managers both for local and overseas companies. The programme is developed on the basis of Latvian and foreign experience and takes into account the needs of national economies of Latvia and foreign countries. The study methods are based on synergetic relationships between theoretical and practically applied business courses and take into account their interconnections. The study course contents include extended and integrated management theories, practical questions and problems, as well as their conceptual solutions. Moreover, students can additionally get theoretical knowledge and practical experience in relation to their professional interests, taking into account labour market requirements and personal tasks.</p> <p>Key specialization areas: Entrepreneurship, Information Management Systems, Tourism Management. Usually, students carry out their Master theses in the framework of the chosen specialization.</p> <p>Key study courses:  Management Economics; International Marketing and Management; Financial Management, Investments and Banking; Management Information Systems; Entrepreneurship Law Regulation; European Law; Project Management Software.</p>
<b>Fee per year:</b>	2100 EUR / 1476 LVL / 3081 USD
<b>Matriculation requirements:</b>	<ul style="list-style-type: none"> <li>• Bachelor's degree</li> <li>• Language test (English)</li> </ul>
<b>Accommodation possibilities and costs:</b>	<p>1) Renovated student residence right in front of the institute 150 EUR / 105 LVL / 220 USD per month</p> <p>2) Student residence close to the institute about 50 EUR / 35 LVL / 73 USD per month</p>
<b>Contact information:</b>	<p><b>Information Systems Management Institute</b>  International Relations Office  Ludzas iela 91, Riga, LV-1003, Latvia  Contact person – <b>Olga Dyakon</b>  Tel.: +371 67218501  E-mail: erasmus@isma.lv</p>
<b>Website:</b>	www.isma.lv

# Computer Systems

<b>Type:</b>	Complete study programme
<b>Degree to be obtained:</b>	Professional Master
<b>Length:</b>	2-3 years
<b>Language:</b>	English
<b>Short description of the programme:</b>	<p>The programme provides academic and professional education in correspondence with modern society requirements for highly qualified experts in computer science. The programme includes various courses in programming including analysis and practical programming, computer network administration, electronic and computer systems modeling and calculations, modern technologies, computer systems authors' rights and computer systems marketing. Associated study courses include extended studies in operation systems, data banks and data bases creation, telecommunications systems, intellectual computer systems (in particular, e-learning education systems), programming, computer hardware. The programme includes extended studies in algorithms theory, formal specifications and programming languages, discrete mathematics etc.</p> <p>Students participate in software creation in a practical way. They are associated with ISMI software projects, create self-dependent computer projects and grants. These professional activities provide them with the necessary practical experience.</p> <p>Graduates of the programme receive professional qualification "System analyst" and can work in production, technologies and science. Besides, a special attention is paid to training specialists, who are also professionally ready to work in entrepreneurship, are able to develop scientifically based management models, evaluate their adequacy and provide expert decision-making, design and create the necessary competitive software and computer information systems, including corresponding manuals and exploitation provision.</p>
<b>Fee per year:</b>	2100 EUR / 1476 LVL / 3081 USD
<b>Matriculation requirements:</b>	<ul style="list-style-type: none"> <li>• Bachelor's degree</li> <li>• Language test (English)</li> </ul>
<b>Accommodation possibilities and costs:</b>	<p>1) Renovated student residence right in front of the institute 150 EUR / 105 LVL / 220 USD per month</p> <p>2) Student residence close to the institute about 50 EUR / 35 LVL / 73 USD per month</p>
<b>Contact information:</b>	<p><b>Information Systems Management Institute</b>  International Relations Office  Ludzas iela 91, Rīga, LV-1003, Latvia  Contact person – <b>Olga Dyakon</b>  Tel.: +371 67218501  E-mail: erasmus@isma.lv</p>
<b>Website:</b>	www.isma.lv





## Christian Social Work

<b>Type:</b>	Separate courses at Bachelor's level
<b>Length:</b>	3 months
<b>Language:</b>	English
<b>Short description of the programme:</b>	The basis of the Christian social work is charity or an art of life requiring to think and to act in a professional way in the name of love towards one's neighbour. LCA is the only higher education institution in the Baltic countries where one can acquire professional education of Christian Social Work. Our call as social workers is to exercise compassion and to learn how to promote social justice.
<b>Fee per month:</b>	220 EUR / 155 LVL / 323 USD
<b>Requirements:</b>	General Certificate of Secondary Education
<b>Accommodation possibilities and costs:</b>	Hotel ~36 EUR / 25 LVL / 53 USD per night Home hosting ~130 EUR / 91 LVL / 191 USD per month
<b>Contact information:</b>	<b>Latvian Christian Academy</b> 5. līnija 3, Jūrmala, LV-2010, Latvia Contact person – <b>Laura Ozola-Marcinkeviča</b> Tel.: +371 67753360 E-mail: Akademija@kra.lv
<b>Website:</b>	<a href="http://www.kra.lv">www.kra.lv</a>
<b>Additional information:</b>	Academy is located in a very beautiful place by the sea in a pine forest in dunes.

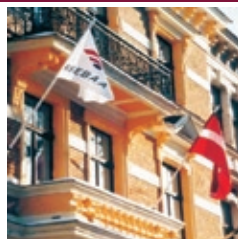
## Public Relations

<b>Type:</b>	Separate courses at Bachelor's level
<b>Length:</b>	3 months
<b>Language:</b>	English
<b>Short description of the programme:</b>	The study programme has a goal to train modern, educated and highly qualified Public Relation managers for work at the State institutions and in local governments, in business institutions and non-governmental organizations, in churches; as well as Public Relation managers that are skilled to solve ethical problems of public relations on the basis of Christian values.
<b>Fee per month:</b>	220 EUR / 155 LVL / 323 USD
<b>Requirements:</b>	General Certificate of Secondary Education
<b>Accommodation possibilities and costs:</b>	Hotel ~36 EUR / 25 LVL / 53 USD per night Home hosting ~130 EUR / 91 LVL / 191 USD per month
<b>Contact information:</b>	<b>Latvian Christian Academy</b> 5. līnija 3, Jūrmala, LV-2010, Latvia Contact person – <b>Laura Ozola-Marcinkeviča</b> Tel.: +371 67753360 E-mail: Akademija@kra.lv
<b>Website:</b>	<a href="http://www.kra.lv">www.kra.lv</a>
<b>Additional information:</b>	Academy is located in a very beautiful place by the sea in a pine forest in dunes.

# Theology

<b>Type:</b>	Separate courses at Bachelor's level
<b>Length:</b>	3 months
<b>Language:</b>	English
<b>Short description of the programme:</b>	The study program on Bachelor level provides theoretic and practical knowledge in Theology. It focuses on the interdisciplinary and innovative approaches to take strategic challenges to educate modern, value oriented leaders and equip students for further research and academic studies.
<b>Fee per month:</b>	220 EUR / 155 LVL / 323 USD
<b>Requirements:</b>	General Certificate of Secondary Education
<b>Accommodation possibilities and costs:</b>	Hotel ~ 36 EUR / 25 LVL / 53 USD per night) Home hosting ~ 130 EUR / 91 LVL / 191 USD per month
<b>Contact information:</b>	<b>Latvian Christian Academy</b> 5. līnija 3, Jūrmala, LV-2010, Latvia Contact person – <b>Laura Ozola-Marcinkeviča</b> Tel.: +371 67753360 E-mail: Akademija@kra.lv
<b>Website:</b>	www.kra.lv
<b>Additional information:</b>	Academy is located in a very beautiful place by the sea in a pine forest in dunes.

# Riga International School of Economics and Business Administration



## European Business Studies

<b>Type:</b>	Complete study programme
<b>Degree to be obtained:</b>	Professional Bachelor
<b>Length:</b>	4 years
<b>Language:</b>	English
<b>Short description of the programme:</b>	<p><b>Theoretical basics and information technologies courses:</b> Micro and Macroeconomics, Information Technologies, Marketing, Fundamentals of Management. Quantitative Methods: higher mathematics for business, Statistics. Social and business Psychology. Civil and Business Law. Management of Information Systems. Financial and Managerial Accounting. Entrepreneurship. Leadership and Organizational behavior. Human resource Management. Corporate finance. Research Methodology. Strategic management.</p> <p><b>Professional specialization courses:</b> International Marketing. International Business Law. European Union. Innovation Management. Business Practice and Administration. Operations management, Logistics. Project Management. Marketing research. International Business and Management. Investments and Financial Markets. Financial management and Financial Risks. <b>Languages and language subjects:</b> English, French, Business Communication in English, Business French. <b>Optional subjects:</b> Negotiation Skills, Presentation Skills, Spanish. Internship in Latvia. Business game INTOPIA™.</p>
<b>Fee per year:</b>	<p>3828 EUR / 2690 LVL / 5617 USD</p> <p>With additional qualification: 4539 EUR / 3190 LVL / 6660 USD</p>
<b>Requirements:</b>	<ul style="list-style-type: none"> <li>• General Certificate of Secondary Education</li> <li>• English language test</li> </ul>
<b>Accommodation possibilities and costs:</b>	RISEBA does not have dormitories, however it assists students in finding suitable accommodation. The prices are starting from 150 EUR/ 105 LVL/ 220 USD per month.
<b>Contact information:</b>	<p><b>Riga International School of Economics and Business Administration</b>  Meža iela 3, Riga, LV-1048, Latvia  Contact person – <b>Baiba Filonenko</b>  Tel.: +371 67600689  Fax.: +371 67500252  E-mail: baiba@rsebaa.lv</p>
<b>Website:</b>	www.rsebaa.lv
<b>Additional information:</b>	All students who are studying at European Business Studies programme have a possibility to study in one of partner universities in Europe and receive a Double Degree.

## International Business

Type:	Complete study programme
Degree to be obtained:	Professional Master
Length:	1 years 5 months or 2 years
Language:	English
Short description of the programme:	<p><b>Core courses</b> build foundation for management knowledge in international context. <b>Elective courses</b> focus on expertise in a certain area of interest. <b>Seminars by business leaders</b> through Semester I and II expose to business practices and challenges in dynamic international contexts. <b>Management consulting</b> gives an opportunity for teams of students supervised by a faculty advisor to work on real-life consulting projects that provide hands-on experimental learning, stimulates new thinking and gives an opportunity to build strong ties with professional peers.</p> <p>International Business Environment, International Finance, Strategic Management &amp; International Marketing, International HRM, International Business Operations, Research Methods for Business, Knowledge Creation and Management, International Entrepreneurship &amp; Innovation, Supply Chain Management, Leadership and Change Management, Networks and Strategic Alliances, E-commerce and New Media, Corporate Governance and Social Responsibility, Team Project (Internship), Dissertation.</p>
Fee:	5122 or 6830 EUR / 3600 or 4800 LVL / 7515 or 10021 USD
Requirements:	<ul style="list-style-type: none"> <li>• Professional Bachelor's Degree in Business Studies</li> <li>• Entrance exam in English or IELTS 6.0 band score or a TOEFL score of 550 or above</li> <li>• Interview</li> </ul>
Accommodation possibilities and costs:	RISEBA does not have dormitories, however it assists students in finding suitable accommodation. The prices are starting from 150 EUR/ 105 LVL/ 220 USD per month.
Contact information:	<p><b>Riga International School of Economics and Business Administration</b>  Meža iela 3, Riga, LV-1048, Latvia  Contact person – <b>Angelika Smagina</b>  Tel.: +371 67600688  Mob. +371 29650432  Fax.: +371 67500252  E-mail: angelika@rsebaa.lv</p>
Website:	www.rsebaa.lv

## Business Administration

<b>Type:</b>	Complete study programme
<b>Degree to be obtained:</b>	Master
<b>Length:</b>	26 months
<b>Language:</b>	English
<b>Short description of the programme:</b>	<p>This is a two year, part-time postgraduate programme. It is designed for those holding a degree or equivalent qualification in subjects other than Business Studies. It typically appeals to engineers, scientists, IT and arts graduates who are now pursuing or proposing to pursue a career in business. However we have many business and economics graduates in our programme as well and they also find this programme rewarding and challenging.</p> <p><b>The programme includes the following main modules:</b></p> <p><b>Induction</b> – essentials of management studies. <b>Business and its environment</b> – Organisational Behaviour, Marketing, Finance, Legal Environment, Operations, Human Resources, Information Technologies. <b>Strategy</b> – includes business simulation (this module takes place at the University of Salford, UK). <b>Entrepreneurial Leadership</b> – Entrepreneurial Process, Management Development, Systems Thinking and Decision Making, Creativity and the Management of Innovation and Change.</p> <p><b>Elective modules:</b> Management in Global Context, Managing Projects and Supply Chains, Customer Management, Financial Management</p> <p><b>Individual Research Project (Dissertation)</b></p>
<b>Fee:</b>	<p>7542 EUR / 5301 LVL / 11065 USD</p> <p>The tuition fee can be paid by installments.</p>
<b>Requirements:</b>	<ul style="list-style-type: none"> <li>• Bachelor's Degree in any field</li> <li>• English language test (IELTS 6.5 band score or a TOEFL score of 575 or above (232 computer based)</li> <li>• 3 years working experience after graduating</li> <li>• Interview</li> </ul>
<b>Accommodation possibilities and costs:</b>	RISEBA does not have dormitories, however it assists students in finding suitable accommodation. The prices are starting from 150 EUR/ 105 LVL/ 220 USD per month.
<b>Contact information:</b>	<p><b>Riga International School of Economics and Business Administration</b>  Meža iela 3, Riga, LV-1048, Latvia  Contact person – <b>Inga Seikstule</b>  Tel.: +371 67500256  Fax: +371 67500252  E-mail: ingas@rsebaa.lv</p>
<b>Website:</b>	www.rsebaa.lv
<b>Additional information:</b>	<p><b>Upon successful completion of the programme students receive two degrees:</b></p> <ul style="list-style-type: none"> <li>• MBA Degree from the University of Salford and</li> <li>• Professional Master's Degree in Business Administration from RISEBA</li> </ul> <p>* The programme is subject to change. Please follow programme update on our website <a href="http://www.riseba.lv">www.riseba.lv</a></p>

## International Tourism faculty

### Tourism and Hospitality Management



<b>Type:</b>	Complete study programme
<b>Degree to be obtained:</b>	Professional Bachelor
<b>Length:</b>	4 years
<b>Language:</b>	English
<b>Short description of the programme:</b>	<p>This study programme is the only programme in the entire Baltic Region and Northern Europe that has been accredited by World Tourism Organisation and has received the WTO <i>TedQual</i> certificate.</p> <p>Such study courses as Introduction into Tourism, Catering Service, Communication Psychology, Management Information Systems, Statistical Methods etc. establish an understanding of the industry and a platform for further acquisition of skills in tourism economics, management and planning in later study years via studies in Microeconomics, Macroeconomics, Marketing, Tourism Business, Tourism Planning and Management, International Tourism Economics and other study courses.</p> <p>At the same time, students acquire skills required for a tourism specialist, get valuable practical training in Latvia and Greece, France, Italy and other European countries.</p> <p>Diploma Obtained: <b>Professional Bachelor's Degree in Business Administration. After studies there are variable employment opportunities:</b> broad-profile hospitality and tourism industry business manager; travel consultant and tour operator; tour guide; restaurant supervisor and manager; hotel administrator and manager; leisure and entertainment company manager and others.</p>
<b>Fee per year:</b>	3500 EUR / 2460 LVL / 5135 USD
<b>Requirements:</b>	General Certificate of Secondary Education, English language knowledge (Official copy of the results of Cambridge Exam (at least the level of Cambridge First Certificate) or TOEFL (gained at least 60% points) or IELTS (minimum 6.0 points), or Turība test (at least 60 points).
<b>Accommodation possibilities and costs:</b>	<p><b>Turība Hostel</b> with its 148 well appointed rooms is located just near Turība. Each hostel floor has 2 well equipped kitchens; students can use washing machines; a computer room with Internet connection is available and there is also a television set in the recreation room.</p> <p>Costs: 54-68 EUR / 38-48 LVL / 79-100 USD per month</p> <p><a href="http://www.hostelturiba.lv">www.hostelturiba.lv</a></p>
<b>Contact information:</b>	<p><b>School of Business Administration „Turība”</b>  Graudu iela 68, Rīga, LV-1058, Latvia  Contact person – <b>Kristīne Tihanova</b> (International Project Coordinator)  Tel.: +371 67625371  Fax: +371 67619152  E-mail: <a href="mailto:Kristine.tihanova@turiba.lv">Kristine.tihanova@turiba.lv</a></p>
<b>Website:</b>	<a href="http://www.turiba.lv">www.turiba.lv</a>

## Tourism Strategic Management

<b>Type:</b>	Complete study programme
<b>Degree to be obtained:</b>	Master
<b>Length:</b>	2 years
<b>Language:</b>	English
<b>Short description of the programme:</b>	<p>The study program contains such business administration courses as Theory of Economics, Personnel Management, Commercial Law, Management Information Systems, Financial Management and others. At the same time students will be studying a course related to tourism management: Tourism Strategic Planning, Tourism Marketing Strategies, Hotel Operation Management, Process Optimisation in Tourism etc.</p> <p>Students acquire skills required for a tourism specialist, get valuable practical training in Latvia and Greece, France, Italy and other European countries.</p> <p><b>Diploma Obtained:</b> Master of Business Administration.</p> <p><b>Professional Qualification Obtained:</b> Manager of Companies and Institutions.</p> <p>After studies there are variable employment opportunities: broad-profile hospitality and tourism industry business manager; travel consultant and tour operator; tour guide; restaurant supervisor and manager; hotel manager; leisure and entertainment company manager and others.</p>
<b>Fee per year:</b>	3500 EUR / 2460 LVL / 5135 USD
<b>Requirements:</b>	Higher education – professional or academic bachelor, or professional qualification (at least 4 years' study programme), English language knowledge (Official copy of the results of Cambridge Exam (at least the level of Cambridge First Certificate) or TOEFL (gained at least 60% points) or IELTS (minimum 6.0 points), or Turiba test (at least 60 points).
<b>Accommodation possibilities and costs:</b>	<p><b>Turiba Hostel</b> with its 148 well appointed rooms is located just near Turiba. Each hostel floor has 2 well equipped kitchens; students can use washing machines; a computer room with Internet connection is available and there is also a television set in the recreation room.</p> <p>Costs: 54-68 EUR / 38-48 LVL / 79-100 USD per month</p> <p><a href="http://www.hostelturiba.lv">www.hostelturiba.lv</a></p>
<b>Contact information:</b>	<p><b>School of Business Administration „Turiba”</b>          Graudu iela 68, Rīga, LV-1058, Latvia          Contact person – <b>Kristine Tihanova</b> (International Project Coordinator)          Tel.: +371 67625371          Fax: +371 67619152          E-mail: <a href="mailto:Kristine.tihanova@turiba.lv">Kristine.tihanova@turiba.lv</a></p>
<b>Website:</b>	<a href="http://www.turiba.lv">www.turiba.lv</a>



## Faculty of Computer Science and Electronics

### Computer Science



<b>Type:</b>	Complete study programme
<b>Degree to be obtained:</b>	Bachelor
<b>Length:</b>	4 years (8 semesters)
<b>Language:</b>	English
<b>Short description of the programme:</b>	<p>This programme focuses on fundamental, encyclopaedic training of professionals of the highest level of the widest range of computer science courses. The programme complies with the international standard of computer education Computing Curricula 2008 prepared by IEEE Computer Society and Association for Computer Machinery and includes the following courses as main subjects:</p> <ul style="list-style-type: none"> <li>• Algorithms and Data Structures</li> <li>• Architecture of Computer Systems</li> <li>• Artificial Intellect And Intelligent Systems</li> <li>• Data and Knowledge Base</li> <li>• Human and Machine Interactions</li> <li>• Digital and Symbolic Calculations</li> <li>• Software Engineering</li> <li>• Programming Languages</li> <li>• Information Management, Data Mining, Multimedia Systems</li> <li>• Modelling and Simulation</li> <li>• Methodology and Technological Principles of the Development of the Large Programme Systems</li> <li>• Hyper Textual Information Systems and Environments and Others.</li> </ul> <p>Carriers of this profession compile the elite of the worldwide computer community.</p>
<b>Fee per year:</b>	3200 EUR / 2249 LVL / 4695 USD
<b>Requirements:</b>	<p>General Certificate of Secondary or Higher education.</p> <p>It is desirable to have 5.5 IELTS (TOEFL 550) for studies in English, but certificate is not obligatory.</p> <p>The 1st year students (after arrival to the Institute) will be tested in physics and mathematics for determining the level of their knowledge and correction of study programme.</p>
<b>Accommodation possibilities and costs:</b>	<p>Students' hostel (double room) 110 EUR / 77 LVL / 161 USD (+ VAT) per month.</p> <p><a href="http://www.tsi.lv/index.php?id=4729&amp;top=0&amp;lang=en&amp;top=0&amp;top=0">http://www.tsi.lv/index.php?id=4729&amp;top=0&amp;lang=en&amp;top=0&amp;top=0</a></p>
<b>Contact information:</b>	<p><b>Transport and Telecommunication Institute</b>  Lomonosova iela 1, Riga, LV-1019, Latvia  Contact person – <b>Alexander Grakovski</b>  Tel.: +371 67100654 (International Office)  Fax: +371 67100535  E-mail: avg@tsi.lv</p>
<b>Website:</b>	<p><a href="http://www.tsi.lv">www.tsi.lv</a>  <a href="http://www.tsi.lv/?id=2165&amp;lang=en&amp;ct=7&amp;r=1407&amp;top=0">http://www.tsi.lv/?id=2165&amp;lang=en&amp;ct=7&amp;r=1407&amp;top=0</a></p>
<b>Additional information:</b>	<p>Residence permit obtaining rules, terms and conditions for non-EU students see on <a href="http://www.tsi.lv/?id=2718&amp;lang=en&amp;ct=6&amp;r=460&amp;top=136">http://www.tsi.lv/?id=2718&amp;lang=en&amp;ct=6&amp;r=460&amp;top=136</a></p>

# Telecommunication Systems and Computer Networks

<b>Type:</b>	Complete study programme
<b>Degree to be obtained:</b>	Bachelor
<b>Length:</b>	4 years (8 semesters)
<b>Language:</b>	English
<b>Short description of the programme:</b>	<p>The programme crosses the basic areas of physics, electronics, mathematics, software focusing on a wide range of practical applications in such areas as radio electronic and telecommunications systems, computer systems and networks, transport telematics systems. Main objective of the programme is to train future professionals with good knowledge and skills in telecommunications and electronics, as well as in the area of computer science and network technologies. The main directions of the study programme are:</p> <ul style="list-style-type: none"> <li>• Types of Computer Networks (Local Area Network, Metropolitan Area Network, Wide Area Network, Global Area Network, Virtual Private Network)</li> <li>• Hardware Components of Networks</li> <li>• Network Topologies and Network Design</li> <li>• Standards, Protocols and Network Technologies</li> <li>• Mobile and Wireless Networks</li> <li>• Maintenance of Telecommunication Equipment and Computer Networks</li> <li>• Digital Signal Processing in Telecommunications</li> <li>• Methods of Analysis and Design of Telecommunication Systems</li> <li>• Information Encoding, Transmission and Protection</li> <li>• Methods and Tools of the Applied Software Development and others.</li> </ul> <p>After the second year a student has an opportunity to receive a Certificate of Professional Competence (CPC) from Cisco NetAcademy participating in this programme.</p>
<b>Fee per year:</b>	3200 EUR / 2249 LVL / 4695 USD
<b>Requirements:</b>	<p>General Certificate of Secondary or Higher education.</p> <p>It is desirable to have 5.5 IELTS (TOEFL 550) for studies in English, but certificate is not obligatory.</p> <p>The 1st year students (after arrival to the Institute) will be tested in physics and mathematics for determining the level of their knowledge and correction of study programme.</p>
<b>Accommodation possibilities and costs:</b>	<p>Students' hostel (double room) 110 EUR / 77 LVL / 161 USD (+ VAT) per month.</p> <p><a href="http://www.tsi.lv/index.php?id=4729&amp;top=0&amp;lang=en&amp;top=0&amp;top=0">http://www.tsi.lv/index.php?id=4729&amp;top=0&amp;lang=en&amp;top=0&amp;top=0</a></p>
<b>Contact information:</b>	<p><b>Transport and Telecommunication Institute</b>  Lomonosova iela 1, Riga, LV-1019, Latvia  Contact person – <b>Alexander Grakovski</b>  Tel.: +371 67100654 (International Office)  Fax: +371 67100535  E-mail: avg@tsi.lv</p>
<b>Website:</b>	<p><b>www.tsi.lv</b>  <a href="http://www.tsi.lv/?id=3763&amp;lang=en&amp;ct=7&amp;r=1407&amp;top=20">http://www.tsi.lv/?id=3763&amp;lang=en&amp;ct=7&amp;r=1407&amp;top=20</a></p>
<b>Additional information:</b>	<p><b>Residence permit obtaining rules, terms and conditions for non-EU students see on</b>  <a href="http://www.tsi.lv/?id=2718&amp;lang=en&amp;ct=6&amp;r=460&amp;top=136">http://www.tsi.lv/?id=2718&amp;lang=en&amp;ct=6&amp;r=460&amp;top=136</a></p>

## Faculty of Management, Economics and Transport

### Technical Maintenance of Aviation Transport



<b>Type:</b>	Complete study programme
<b>Degree to be obtained:</b>	Higher Professional Degree (1 <sup>st</sup> Level)
<b>Length:</b>	2 years 9 months (5,5 semesters)
<b>Language:</b>	English
<b>Short description of the programme:</b>	<p>Aviation transport is a complex type of transport branch based on the most advanced achievements of science and engineering. Technicians are the most numerous and therefore the most demanded part of the staff providing the admission of aircraft to flying operation.</p> <p>The programme provides a basic training of aviation specialists-professionals for the following professions: Aircraft Maintenance Mechanic Technician (Category B1) and Aircraft Maintenance Avionics Technician (Category B2). These qualifications serve as a necessary condition for further training in the European centers of aeronautical engineering to receive the license for the aircraft technical maintenance in any airport in Europe and the world.</p> <p>Training is conducted according to special education modules, with contents regulated by the European requirements for aviation specialists. The content of subjects (modules) is defined by the European Commission Regulation (EC) Nr. 2042/2003 (document PART-66). Special practical training in according of RART-66 is included in the syllabus of the training course.</p>
<b>Fee per year:</b>	3200 EUR / 2249 LVL / 4695 USD
<b>Requirements:</b>	<p>General Certificate of Secondary or Higher education.</p> <p>It is desirable to have 5.5 IELTS (TOEFL 550) for studies in English, but certificate is not obligatory.</p> <p>The 1st year students (after arrival to the Institute) will be tested in physics and mathematics for determining the level of their knowledge and correction of study programme.</p>
<b>Accommodation possibilities and costs:</b>	<p>Students' hostel (double room) 110 EUR / 77 LVL / 161 USD (+ VAT) per month.</p> <p><a href="http://www.tsi.lv/index.php?id=4729&amp;top=0&amp;lang=en&amp;top=0&amp;top=0">http://www.tsi.lv/index.php?id=4729&amp;top=0&amp;lang=en&amp;top=0&amp;top=0</a></p>
<b>Contact information:</b>	<p><b>Transport and Telecommunication Institute</b>  Lomonosova iela 1, Riga, LV-1019, Latvia  Contact person – <b>Alexander Grakovski</b>  Tel.: +371 67100654 (International Office)  Fax: +371 67100535  E-mail: avg@tsi.lv</p>
<b>Website:</b>	<p><b>www.tsi.lv</b>  <a href="http://www.tsi.lv/?id=4390&amp;lang=en&amp;ct=7&amp;r=1407&amp;top=136">http://www.tsi.lv/?id=4390&amp;lang=en&amp;ct=7&amp;r=1407&amp;top=136</a></p>
<b>Additional information:</b>	<p><b>Residence permit obtaining rules, terms and conditions for non-EU students see on</b>  <a href="http://www.tsi.lv/?id=2718&amp;lang=en&amp;ct=6&amp;r=460&amp;top=136">http://www.tsi.lv/?id=2718&amp;lang=en&amp;ct=6&amp;r=460&amp;top=136</a></p>

# Transport and Business Logistics

<b>Type:</b>	Complete study programme
<b>Degree to be obtained:</b>	Higher Professional Degree (2 <sup>nd</sup> Level)
<b>Length:</b>	4 years (8 semesters)
<b>Language:</b>	English
<b>Short description of the programme:</b>	<p>Contemporary global world economical processes require global instruments, among them logistics controlling all the global resources (material, information, finance and etc.) flows. The programme prepares logistics professionals who provide and optimize main characteristics of the flows. The programme includes the following courses as main subjects:</p> <ul style="list-style-type: none"> <li>• Transportation</li> <li>• Integrated Logistics</li> <li>• Transport Telematics</li> <li>• Multimodal Transport</li> <li>• Transport Economics</li> <li>• Supply Chain Management</li> <li>• International Trade and Logistics</li> <li>• Project Management</li> <li>• Warehouse Management</li> <li>• Logistics Information Systems</li> <li>• Industrial Organisation and Business Strategic Management and others.</li> </ul> <p>Logistics possesses a strategically important role in a modern business. This explains why always more successful specialists in this field are moving towards the leading positions in the management of companies.</p>
<b>Fee per year:</b>	3200 EUR / 2249 LVL / 4695 USD
<b>Requirements:</b>	<p>General Certificate of Secondary or Higher education.</p> <p>It is desirable to have 5.5 IELTS (TOEFL 550) for studies in English, but certificate is not obligatory.</p> <p>The 1st year students (after arrival to the Institute) will be tested in physics and mathematics for determining the level of their knowledge and correction of study programme.</p>
<b>Accommodation possibilities and costs:</b>	<p>Students' hostel (double room) 110 EUR / 77 LVL / 161 USD (+ VAT) per month.</p> <p><a href="http://www.tsi.lv/index.php?id=4729&amp;top=0&amp;lang=en&amp;top=0&amp;top=0">http://www.tsi.lv/index.php?id=4729&amp;top=0&amp;lang=en&amp;top=0&amp;top=0</a></p>
<b>Contact information:</b>	<p><b>Transport and Telecommunication Institute</b>  Lomonosova iela 1, Riga, LV-1019, Latvia  Contact person – <b>Alexander Grakovski</b>  Tel.: +371 67100654 (International Office)  Fax: +371 67100535  E-mail: avg@tsi.lv</p>
<b>Website:</b>	<p><a href="http://www.tsi.lv">www.tsi.lv</a>  <a href="http://www.tsi.lv/?id=2187&amp;lang=en&amp;ct=3&amp;cid=2187&amp;r=2188&amp;top=136">http://www.tsi.lv/?id=2187&amp;lang=en&amp;ct=3&amp;cid=2187&amp;r=2188&amp;top=136</a></p>
<b>Additional information:</b>	<p><b>Residence permit obtaining rules, terms and conditions for non-EU students see on</b>  <a href="http://www.tsi.lv/?id=2718&amp;lang=en&amp;ct=6&amp;r=460&amp;top=136">http://www.tsi.lv/?id=2718&amp;lang=en&amp;ct=6&amp;r=460&amp;top=136</a></p>

## Useful information resources

**Academic Programme Agency**

[www.apa.lv](http://www.apa.lv)

**Higher Education Quality Evaluation Centre**

[www.aiknc.lv](http://www.aiknc.lv)

**State Education Development Agency**

[www.viaa.gov.lv](http://www.viaa.gov.lv)

**Ministry of Education and Science**

[www.izm.gov.lv](http://www.izm.gov.lv)

**Ministry of Foreign Affairs, Latvian diplomatic missions in other countries and foreign diplomatic missions in Latvia**

[www.am.gov.lv/en](http://www.am.gov.lv/en)

**Office of Citizenship and Migration Affairs**

[www.ocma.gov.lv](http://www.ocma.gov.lv)

**The Latvian Institute**

[www.li.lv](http://www.li.lv)

# Alphabetical list of study programmes

## A

Applied Mechanics (Doctor) 29  
Aviation Transport (Bachelor) 25  
Aviation Transport (First level of higher professional education) 26  
Aviation Transport (Master) 27

## B

Baltic International Summer School (BISS) 63  
Baltic Sea Region Studies (Master) 36  
BSc Programme in Economics and Business (Bachelor of Science) 60  
Business Administration (Master) 78  
Business Administration (Professional Bachelor) 68  
Business Administration (Professional Master) 71  
Business Administration (Second level higher professional education) 67  
Business Administration (Study module at Bachelor`s level) 62

## C

Christian Social Work (Separate courses at Bachelor`s level) 73  
Civil Engineering, Mechanics (Doctor) 17  
Computerised Control of Electrical Technologies (Master) 18  
Computer Science (Bachelor) 81  
Computer Systems (Bachelor) 11  
Computer Systems (Doctor) 13  
Computer Systems (Master) 12  
Computer Systems (Professional Master) 72  
Creative Industries Management (Master) 44

## E

Educational Treatment of Diversity (Master) 42  
Engineering Technology, Mechanics and Mechanical Engineering (Bachelor) 23  
Engineering Technology, Mechanics and Mechanical Engineering (Master) 24  
Entrepreneurship and Management (Bachelor) 30  
Entrepreneurship and Management (Master) 31  
Environmental Sciences (Doctor) 20  
Environmental Sciences (Master) 19  
European Business School (Bachelor) 65  
European Business Studies (Professional Bachelor) 76  
European Studies (Bachelor) 66  
European Studies (Master) 37  
European Union Law and Policy (Master) 56  
Executive Master of Business Administration (Master) 59

## F

Finance (Professional Bachelor) 45  
Foreign Language Teacher (Bachelor) 52  
French Philology (Bachelor) 40

## G

Geodesy and Cartography (Bachelor) 15  
Geodesy and Cartography (Master) 16  
German Philology (Bachelor) 39

## I

Information Systems (Professional Bachelor) 70  
Innovations and Entrepreneurship (Master) 32  
International and European Law (Master) 53  
International Business (Professional Master) 77  
International Finance and Banking (Master) 43  
Interpreter Assistant (Bachelor) 51

## L

Law and Finance (Master) 57

Legal Linguistics (Master) 58

## M

Marine Electrical Automation (Bachelor) 50

Marine Engineering (Professional Bachelor) 49

Marine Transportation and Operations (Master) 48

Marine Transport – Navigation (Bachelor) 46

Mathematical Modelling (Doctor) 14

MBA International Business, with specialization in Export Management (Master) 38

Medical Doctor (Medical Doctor) 41

Medicine (Medical Doctor) 9

## P

Port and Shipping Management (Bachelor) 47

Public International Law and Human Rights (Master) 54

Public Relations (Separate courses at Bachelor`s level) 74

## S

Stomatology (Doctor of Dental Surgery) 10

Summer school for students of architecture and urban planning 35

## T

Technical Maintenance of Aviation Transport (Higher Professional Degree (1st level) 83

Technical Translation (Bachelor) 33

Technical Translation (Master) 34

Telecommunications (Bachelor) 21

Telecommunications (Master) 22

Telecommunication Systems and Computer Networks (Bachelor) 82

Theology (Separate courses at Bachelor`s level) 75

Thermal Energy and Heat Engineering (Master) 28

Tourism and Hospitality Management (Professional Bachelor) 79

Tourism Management (Professional Bachelor) 69

Tourism Strategic Management (Master) 80

Transborder Commercial Law (Master) 55

Translation and Interpretation (Professional Bachelor) 64

Translation / Interpretation (Separate courses at Bachelor`s level) 61

Transport and Business Logistics (Higher Professional Degree, 2<sup>nd</sup> level) 84

# List of subject areas

## Business Studies and Management Sciences

BSc Programme in Economics and Business (Bachelor of Science) 60  
Business Administration (Master) 78  
Business Administration (Professional Bachelor) 68  
Business Administration (Professional Master) 71  
Business Administration (Second level higher professional education) 67  
Business Administration (Study module at Bachelor`s level) 62  
Creative Industries Management (Master) 44  
Entrepreneurship and Management (Bachelor) 30  
Entrepreneurship and Management (Master) 31  
European Business School (Bachelor) 65  
European Business Studies (Professional Bachelor) 76  
Executive Master of Business Administration (Master) 59  
Finance (Professional Bachelor) 45  
Innovations and Entrepreneurship (Master) 32  
International Business (Professional Master) 77  
International Finance and Banking (Master) 43  
MBA International Business, with specialization in Export Management (Master) 38  
Port and Shipping Management (Bachelor) 47  
Tourism and Hospitality Management (Professional Bachelor) 79  
Tourism Management (Professional Bachelor) 69  
Tourism Strategic Management (Master) 80  
Transport and Business Logistics (Higher Professional Degree, 2nd level) 84

## Education, Teacher Training

Educational Treatment of Diversity (Master) 42

## Engineering, Technology, Information and Computer Technologies

Applied Mechanics (Doctor) 29  
Aviation Transport (Bachelor) 25  
Aviation Transport (First level of higher professional education) 26  
Aviation Transport (Master) 27  
Civil Engineering, Mechanics (Doctor) 17  
Computerised Control of Electrical Technologies (Master) 18  
Computer Science (Bachelor) 81  
Computer Systems (Bachelor) 11  
Computer Systems (Doctor) 13  
Computer Systems (Master) 12  
Computer Systems (Professional Master) 72  
Engineering Technology, Mechanics and Mechanical Engineering (Bachelor) 23  
Engineering Technology, Mechanics and Mechanical Engineering (Master) 24  
Information Systems (Professional Bachelor) 70  
Marine Electrical Automation (Bachelor) 50  
Marine Engineering (Professional Bachelor) 49  
Marine Transportation and Operations (Master) 48  
Marine Transport – Navigation (Bachelor) 46  
Mathematical Modelling (Doctor) 14  
Technical Maintenance of Aviation Transport (Higher Professional Degree (1st level) 83  
Telecommunications (Bachelor) 21  
Telecommunications (Master) 22  
Telecommunication Systems and Computer Networks (Bachelor) 82  
Thermal Energy and Heat Engineering (Master) 28



## **Geography, Geology**

Geodesy and Cartography (Bachelor) 15  
Geodesy and Cartography (Master) 16  
Environmental Sciences (Doctor) 20  
Environmental Sciences (Master) 19

## **Languages and Philological Sciences**

Foreign Language Teacher (Bachelor) 52  
French Philology (Bachelor) 40  
German Philology (Bachelor) 39  
Interpreter Assistant (Bachelor) 51  
Technical Translation (Bachelor) 33  
Technical Translation (Master) 34  
Translation and Interpretation (Professional Bachelor) 64  
Translation / Interpretation (Separate courses at Bachelor`s level) 61

## **Law**

European Union Law and Policy (Master) 56  
International and European Law (Master) 53  
Law and Finance (Master) 57  
Legal Linguistics (Master) 58  
Public International Law and Human Rights (Master) 54  
Transborder Commercial Law (Master) 55

## **Medical Sciences**

Medical Doctor (Medical Doctor) 41  
Medicine (Medical Doctor) 9  
Stomatology (Doctor of Dental Surgery) 10

## **Social Sciences, Humanities**

Baltic Sea Region Studies (Master) 36  
Christian Social Work (Separate courses at Bachelor`s level) 73  
European Studies (Bachelor) 66  
European Studies (Master) 37  
Public Relations (Separate courses at Bachelor`s level) 74  
Theology (Separate courses at Bachelor`s level) 75

## **Other areas**

Baltic International Summer School (BISS) 63  
Summer school for students of architecture and urban planning 35

